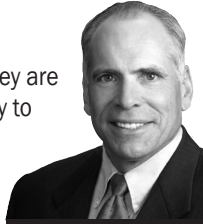


Lincoln Public Schools is a premier school district that provides excellence in education for all our students, evidenced in a tradition of rigorous academic standards and achievement. Educators at LPS are committed, motivated and incredibly dedicated to the young people of this community.

Our goal is to continue improving our schools, one student at a time, until they are all successful. We invite our community to stay connected and involved with our schools as we work together to ensure an exciting future for our children.

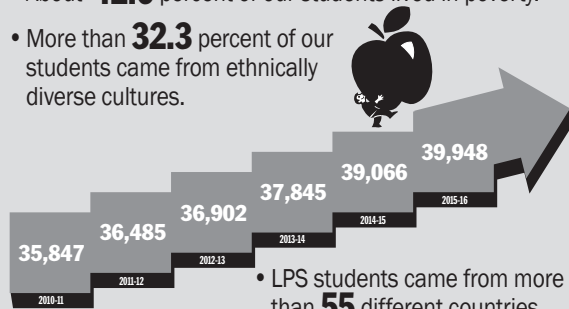


Dr. Steve Joel  
Superintendent of Schools

### Enrollment Numbers

In the past five years enrollment at LPS has increased more than **11** percent. **In 2015-16:**

- About **42.6** percent of our students lived in poverty.
- More than **32.3** percent of our students came from ethnically diverse cultures.



- LPS students came from more than **55** different countries.

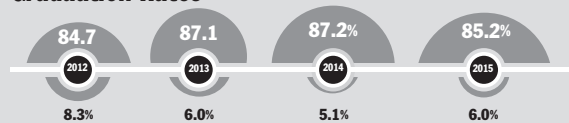
For more information contact: Leslie Eastman  
(402) 436-1790 | [leastman@lps.org](mailto:leastman@lps.org) | <http://lps.org/go/stats>

### District-Wide ACT

In the 2014 LPS graduating class, almost **100** percent – **2,279** graduating seniors – took the ACT. In the 2015 LPS graduating class, more than **85** percent – **2,344** graduating seniors – took the ACT.

For more information contact: Jane Stavem  
(402) 436-1625 | [jstavem@lps.org](mailto:jstavem@lps.org) | <http://lps.org/go/nesa>

### Graduation Rates



### Dropout Rates

For more information contact: Jane Stavem  
(402) 436-1625 | [jstavem@lps.org](mailto:jstavem@lps.org) | <http://lps.org/go/nesa>

### How Can You Help?

Be an advocate by:

- Volunteering in the schools by reading to kids, tutoring, or sharing your skills.
- Attending school activities and asking how you can help.
- Supporting specific LPS projects by donating to Fund-A-Need at [foundationforlps.org](http://foundationforlps.org)
- Participating in business-school partnerships.



**POUND MIDDLE SCHOOL**

4740 South 45th Street  
Lincoln, NE 68516  
402-436-1217 • Fax: 402-458-3217  
<http://pound.lps.org>



*Serving the Community*

[www.LincolnREALTORS.com](http://www.LincolnREALTORS.com)



**Foundation**

LINCOLN PUBLIC SCHOOLS

[www.foundationforlps.org](http://www.foundationforlps.org)

### LINCOLN BOARD OF EDUCATION

5905 O Street • Lincoln, NE 68510

The Lincoln Public School District does not discriminate on the basis of race, color, national origin, religion, sex, marital status, sexual orientation, disability, age, genetic information, citizenship status or economic status in its programs, activities and employment.

LINCOLN PUBLIC SCHOOLS

# POUND MIDDLE SCHOOL



**SCHOOL SNAPSHOT**



## Pound Middle School



### *Student performance requires a community-driven comprehensive system of supports*

#### MISSION STATEMENT

*“The mission of Pound Middle School is to inspire and empower positive attitudes and meaningful relationships, while developing responsible citizens through dynamic learning experiences in a diverse community.”*

#### Students

- 880 Students, grades 6-8
- 32% Minority Students
- 20% Gifted
- 14% Special Education
- 3% Mobility rate
- 26% Eligible for free/reduced meals
- 96% Average daily attendance rate

#### Staff

- 64 Teachers: 106 total staff
- Three counselors, school social worker, school psychologist, speech therapist, media specialist, subject area specialists
- Four State Teachers of the Year

- Four Time Warner Crystal Apple Award winning teachers
- Time Warner National Champion Principal for supporting teachers use of technology in the classroom

#### Technology

- 7 computer labs
- 100% classrooms with computer(s) and projection
- Multi-media opportunities for students

#### Special Programs

- Differentiated Classes:
  - Social Studies
  - English
  - Math
  - Science
- World Language:
  - French and Spanish
- TeamMates
- Reading and math interventions
- Interdisciplinary teaming
- Student/Parent Team Support
- Full range of special education services

#### Extracurricular Clubs

- Student Council
- Mathcounts
- Jazz Band I and II
- Archery (State Champs 2010, 2011, 2012, 2013, 2015, 2016)
- Squire Squad
- Sing & Swing Choir
- Seasonal Athletics
- Technology Club

- Science Olympiad
- Geography Bee
- Pound Pals
- And many more

#### Family Programs

- YMCA Sports
- Parent Teacher Organization
- YMCA Aftercare

#### School Day

- 8:00 a.m.-2:58 p.m
- Office 7:00 a.m.-4:00 p.m.

#### VIP Partners

- HyVee-Williamsburg Village

#### What's unique about

#### Pound?

- Opened in 1963
- Named after the family of Judge Stephen Bosworth Pound Roscoe, Louise and Olivia Pound
- Three feeder elementary schools Humann, Zeman, Calvert
- Feed students to Lincoln Southeast High School
- Completed major renovations including A/C, additional 16 classrooms and one gym in 2009
- Achievement 2015
  - 90% - Reading
  - 85% - Math
  - 90% - Writing
  - % (Proficient)