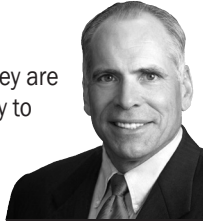


Lincoln Public Schools is a premier school district that provides excellence in education for all our students, evidenced in a tradition of rigorous academic standards and achievement. Educators at LPS are committed, motivated and incredibly dedicated to the young people of this community.

Our goal is to continue improving our schools, one student at a time, until they are all successful. We invite our community to stay connected and involved with our schools as we work together to ensure an exciting future for our children.

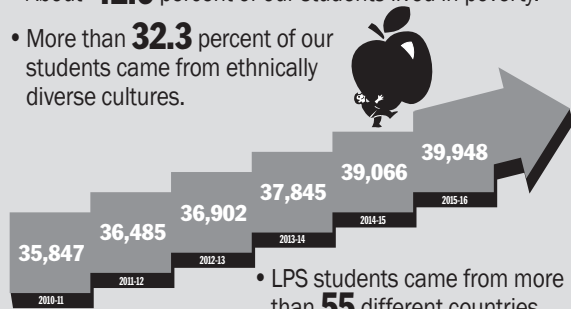


Dr. Steve Joel
Superintendent of Schools

Enrollment Numbers

In the past five years enrollment at LPS has increased more than **11** percent. **In 2015-16:**

- About **42.6** percent of our students lived in poverty.
- More than **32.3** percent of our students came from ethnically diverse cultures.



- LPS students came from more than **55** different countries.

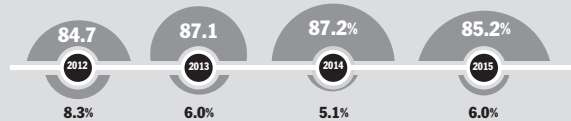
For more information contact: **Leslie Eastman**
(402) 436-1790 | leastman@lps.org | <http://lps.org/go/stats>

District-Wide ACT

In the 2014 LPS graduating class, almost **100** percent – **2,279** graduating seniors – took the ACT. In the 2015 LPS graduating class, more than **85** percent – **2,344** graduating seniors – took the ACT.

For more information contact: **Jane Stavem**
(402) 436-1625 | jstavem@lps.org | <http://lps.org/go/nesa>

Graduation Rates



Dropout Rates

For more information contact: **Jane Stavem**
(402) 436-1625 | jstavem@lps.org | <http://lps.org/go/nesa>

How Can You Help?

Be an advocate by:

- Volunteering in the schools by reading to kids, tutoring, or sharing your skills.
- Attending school activities and asking how you can help.
- Supporting specific LPS projects by donating to Fund-A-Need at foundationforlps.org
- Participating in business-school partnerships.



IRVING MIDDLE SCHOOL

2745 South 22nd Street
Lincoln, NE 68502

402-436-1214 • Fax: 402-458-3214
<http://irving.lps.org>



Serving the Community

www.LincolnREALTORS.com



Foundation

LINCOLN PUBLIC SCHOOLS

www.foundationforlps.org

LINCOLN BOARD OF EDUCATION

5905 O Street • Lincoln, NE 68510

The Lincoln Public School District does not discriminate on the basis of race, color, national origin, religion, sex, marital status, sexual orientation, disability, age, genetic information, citizenship status or economic status in its programs, activities and employment.

LINCOLN PUBLIC SCHOOLS

IRVING MIDDLE SCHOOL



SCHOOL SNAPSHOT



Irving Middle School



Student performance requires a community-driven comprehensive system of supports

Students

- 821 Students, grades 6-8
- 29% Minority students
- 28% Gifted
- 18% Special Education
- 10% Mobility rate
- 38% Eligible for free/reduced meals
- 95% Average daily attendance rate

Staff

- 70 Teachers: 123 total staff
- 3 Counselors
- 1 Media Specialist
- 1 Psychologist
- Part time staff includes a registered nurse and a social worker
- Support staff includes secretaries, technicians, custodians, nutrition staff, interpreters and paraeducators

Technology

- 2 Computer labs and 8 mobile labs
- All teachers have laptops
- Teacher web sites viewable access for students & parents
- All classrooms have iPad (for instructional use)
- Short throw projector
- Access point for Wi-Fi
- HDMI Cable

- 2016-17 All 6th/7th graders have Chromebooks

Special Programs

- TeamMates
- Student/Parent Team Support
- UNL practicum & student teacher program
- UNL Target Bully Program
- Positive Behavior Supports (PBIS) Program
- M.S. Hearing Impaired Prog.

Extracurricular Clubs

- Math Counts
- Science Olympiad
- Geography Bee
- Red Cross
- Intramural athletics
- Vocal music groups
- Student Council
- Student/Parent reading program
- Chimney Swifts Club
- Sewing Club
- Sign Language Club
- Environmental Club

Community Programs

- Irving Recreation Center, Rick Lingard, Director
- Lincoln Food Bank Drive
- Community Service Projects

School Day

- 8:00 a.m.-2:58 p.m.
- Breakfast Program 7:30 a.m.-7:50 a.m.
- Office 7:00 a.m.-4:00 p.m.

What's unique about Irving?

- Main structure built in 1927
- Shares space with Lincoln's Irving Recreation Center
- Named for Washington Irving who authored such favorites as Rip Van Winkle and Legend of Sleepy Hollow
- Only 7 different principals in 89 years
- Oldest middle school in LPS
- \$20 million Air Quality Project completed in 2011

