

Wysong Elementary School

2022-2023

School Calendar Family Handbook

7901 Blanchard Blvd. • Phone: 402-436-1185 • Fax: 402-458-3271
Website: <http://wysong.lps.org>

Stephanie Drake, Principal • Jessica Hughes, Assistant Principal



2022-2023 Student Calendar



Lincoln Public Schools
Lincoln, Nebraska



Approved 4/20

JULY 2022

S	M	T	W	T	F	S
					1	2
3	4	5	6	7	8	9
10	11	12	13	14	15	16
17	18	19	20	21	22	23
24	25	26	27	28	29	30
31						

JANUARY 2023

S	M	T	W	T	F	S
1	2	3	4	5	6	7
8	9	10	11	12	13	14
15	16	17	18	19	20	21
22	23	24	25	26	27	28
29	30	31				

AUGUST 2022

S	M	T	W	T	F	S
	1	2	3	4	5	6
7	8	9	10	11	12	13
14	15	16	17	18	19	20
21	22	23	24	25	26	27
28	29	30	31			

FEBRUARY 2023

S	M	T	W	T	F	S
			1	2	3	4
5	6	7	8	9	10	11
12	13	14	15	16	17	18
19	20	21	22	23	24	25
26	27	28				

SEPTEMBER 2022

S	M	T	W	T	F	S
				1	2	3
4	5	6	7	8	9	10
11	12	13	14	15	16	17
18	19	20	21	22	23	24
25	26	27	28	29	30	

MARCH 2023

S	M	T	W	T	F	S
				1	2	3
4	5	6	7	8	9	10
11	12	13	14	15	16	17
18	19	20	21	22	23	24
25	26	27	28	29	30	31

OCTOBER 2022

S	M	T	W	T	F	S
						1
2	3	4	5	6	7	8
9	10	11	12	13	14	15
16	17	18	19	20	21	22
23	24	25	26	27	28	29
30	31					

APRIL 2023

S	M	T	W	T	F	S
						1
2	3	4	5	6	7	8
9	10	11	12	13	14	15
16	17	18	19	20	21	22
23	24	25	26	27	28	29
30						

NOVEMBER 2022

S	M	T	W	T	F	S
		1	2	3	4	5
6	7	8	9	10	11	12
13	14	15	16	17	18	19
20	21	22	23	24	25	26
27	28	29	30			

MAY 2023

S	M	T	W	T	F	S
	1	2	3	4	5	6
7	8	9	10	11	12	13
14	15	16	17	18	19	20
21	22	23	24	25	26	27
28	29	30	31			

DECEMBER 2022

S	M	T	W	T	F	S
				1	2	3
4	5	6	7	8	9	10
11	12	13	14	15	16	17
18	19	20	21	22	23	24
25	26	27	28	29	30	31

JUNE 2023

S	M	T	W	T	F	S
				1	2	3
4	5	6	7	8	9	10
11	12	13	14	15	16	17
18	19	20	21	22	23	24
25	26	27	28	29	30	

- First and last days of class for students
- All schools not in session
- All schools will dismiss early, check school building schedule
- Elementary school students NOT in attendance (plan days)
- Quarter start dates
- Quarter end dates

Rev. 4/8/22

GRADUATION DATES

Thursday, May 18, 2023: Yankee Hill Program
Thursday, May 18, 2023: Independence Adacemy
Thursday, May 25, 2023: Bryan Community Focus Program
Friday, Saturday and Sunday, May 26-28, 2023
Fri: LNS | Sat: East/LHS/LSE | Sun: LNE/LSW

Calendar Options for Families: The Lincoln Public Schools District understands and appreciates that our community has a wide variety of rich and varied religious celebrations and observances. In the event families recognize these holidays, parents should notify schools. Students will be given excused absences and allowed reasonable opportunities to make up any schoolwork missed.

Note: Changes to the calendar may occur as a result of inclement weather or other circumstances. If sufficient school time is lost as a result of calendar changes, and it brings the total number of school hours for the year below the state minimum requirements, the Superintendent will implement a plan for making up this time, which may require additional minutes added to the day, additional days added to the calendar, days previously identified as non-student days re-scheduled as student day, or other appropriate calendar or schedule measures.

Welcome To Wysong!

We Are Wysong! We Stick Together!

Dear Wysong Students and Families,

Welcome to Sally G. Wysong Elementary! We are very pleased for you to be a part of our Wysong School Community. This handbook has been prepared as a resource for our families to become familiar with some of the practices and procedures at Wysong.

Practices or procedures that are consistent at all elementary schools are included in the "Important Information Booklet" that will be sent electronically to you from Lincoln Public Schools. I have included a table of contents for the "Important Information Booklet" in our handbook for your convenience. For this reason, please familiarize yourself with elementary practices in the "Important Information Booklet".

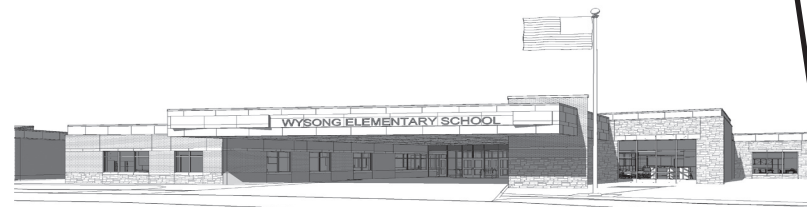
We send families weekly communication through both a grade level and school wide newsletter. We know the importance of strong communication and partnership with you. Please look for these each Friday.

On behalf of our entire staff, we look forward to partnering with you as we get ready to begin the 2022-23 school year.

Sincerely,

Stephanie Drake,
Principal

Jessica Hughes,
Assistant Principal



Lincoln Public Schools Important Information Handbook Table of Contents

lps.org/ii

Lincoln Public Schools has developed an important information handbook intended to be used by students, parents and staff as a guide to the rules, regulations, and general information about Lincoln Public Schools. Each student is responsible for becoming familiar with the handbook and knowing the information contained in it. Parents are encouraged to use this handbook as a resource and to assist their child in following the rules contained in this handbook.

Although the information found in this handbook is detailed and specific on many topics, the handbook is not intended to be all encompassing so as to cover every situation and circumstance that may arise during any school day, or school year. This handbook does not create a "contract." The administration reserves the right to make decisions and make rule revisions at any time to implement the educational program and to assure the well being of all students. The administration will be responsible for interpreting the rules contained in the handbook. Should a situation or circumstance arise that is not specifically covered in this handbook, the administration will make a decision based upon all applicable School District policies, and state and federal statutes and regulations. The information provided in this book is subject to change without notice. On the right you will find the table of contents from this informative handbook.

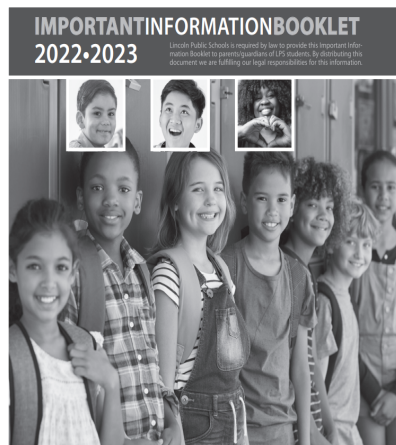


TABLE OF CONTENTS

GENERAL INFORMATION

Student Calendar.....	1
Letter to Parents.....	1
Lincoln Board of Education.....	2
District Board Boundary Map.....	3
Communicating Concerns.....	3
District Map.....	4
School Directory.....	5
School Start and End Times.....	6

ATHLETICS AND ACTIVITIES

Intramural and Interscholastic Athletic Participation Guidelines.....	6
Interscholastic Athletic/Activity Participation.....	8

COMMUNICATION SERVICES

Communications.....	9
Smoke-Free Environment.....	9
Severe Weather Policy.....	9
Copyright and Fair Use Policy.....	10
LPSDO Frequently Called Numbers.....	10

CURRICULUM

Gifted Program.....	12
---------------------	----

DEPARTMENT OF EARLY CHILDHOOD

Early Childhood.....	12
----------------------	----

HEALTH SERVICES

Student Health Information.....	13
---------------------------------	----

INSTRUCTION, DIVISION OF

Student Fees Policy.....	16
Student Fees Policy Appendix.....	19

MULTICULTURAL OFFICE

Multicultural Advisory Committee.....	21
---------------------------------------	----

NUTRITION SERVICES

School Cafeteria Accounts.....	22
Free + Reduced Meal Benefits.....	23
Frequently Asked Questions.....	23
Contact Information.....	25

SPECIAL EDUCATION

Special Education Identification and Placement Procedure.....	26
---	----

STUDENT SERVICES

Parental Involvement.....	28
Birth Certificate Requirements.....	28
Goals for Students.....	28
Application for Special Attendance Permit.....	29
Educational Equity.....	29
Guidelines for Religious Holidays.....	29
Rights and Responsibilities of Students.....	30
Notice of Nondiscrimination/Contacts.....	32
Law Enforcement.....	32
Dating Violence Policy.....	33
Anti-Bullying Policy.....	33
Child Abuse.....	33
Technology Resources Use.....	33
Nuisance Items.....	36
Student Attendance.....	36
Care of Property.....	37
Student Rights.....	37
Rights of Divorced Parents.....	42
Safe and Drug-Free Schools.....	43
Student Photo ID Cards.....	44
Visitors and Volunteers.....	44

COMMON PRACTICES.....

Communicating Grades.....	46
Elementary School Common Practices.....	46
Middle School Common Practices.....	47
High School Common Practices.....	48

THREAT ASSESSMENT

Threat Assessment Program.....	50
School Safety.....	51
Searches of Students and Property.....	51
Video Surveillance.....	51

TRANSPORTATION.....

.....	52
-------	----



Outside Organizations:

COMMUNITY ENGAGEMENT..... 52

FOUNDATION FOR LINCOLN PUBLIC SCHOOLS..... 53

FORMS (Additional copies available at lps.org)

Educational Equity Complaint Form..... 54

Medical Statement for Students with Special Nutritional Needs..... 55

Application for Fee Waiver and Sharing of Information Consent..... 57

Title VI Student Eligibility Certification..... 59

Additional forms that need to be completed for all students are available from school offices or may be sent home on the first day of school.

THE IMPORTANT INFORMATION BOOKLET

Throughout this book the term "Parents" refers to both natural or adoptive parents and to legal guardians.

This handbook is intended to be used by students, parents and staff as a guide to the rules, regulations, and general information about Lincoln Public Schools. Each student is responsible for becoming familiar with the handbook and knowing the information contained in it. Parents are encouraged to use this handbook as a resource and to assist their child in following the rules contained in this handbook.

Although the information found in this handbook is detailed and specific on many topics, the handbook is not intended to be all-encompassing so as to cover every situation and circumstance that may arise during any school day, or school year. This handbook does not create a "contract." The administration reserves the right to make decisions and make rule revisions at any time to implement the educational program and to assure the well being of all students. The administration will be responsible for interpreting the rules contained in the handbook. Should a situation or circumstance arise that is not specifically covered in this handbook, the administration will make a decision based upon all applicable School District policies, and state and federal statutes and regulations. The information provided in this book is subject to change without notice. For an update on any LPS policies please go to our website www.lps.org. As we saw during the 2020-2021 school year, revisions in plans, procedure and protocols may need to be made for health (e.g., COVID) and other reasons. If you have any questions or concerns, please feel free to call 436-1000 or the individual department phone number listed at the beginning of each section.

Wysong School Faculty - 2022-23

Main Office - (402) 436-1185

Office

Stephanie Drake-Principal
 Jessica Hughes -Asst. Principal
 Bridget Schultz- Executive Sec.
 Katie Kriegler- Registrar
 Jennifer Austin- School Nurse
 Phylicia Robertson- Health Tech

Special Education Teachers

Cassandra Reinke
 Natalie Sharp
 Alyssa Wasmund

Special Ed. Para Educators

Emily Belau
 Whitney Bumgarner
 Kathleen Gadeken
 Jes Medved
 Laura Morris
 Mary Ritchie

Speech

Kiley Bauer
 Jamie Swartz

Psychologist

Meghan Schwank

School Social Worker

Ursula Vernon-Hansen

Kindergarten

Erin Bouwens
 Keri Daffer
 Jennifer Engle
 Katelyn Nelson
 Makenzie Scollard

1st Grade

Sarah Ashelford
 Stefanie Bridger
 Ashley Capoun
 Lauren Cope
 Elizabeth Flowerday
 Hollie Higgins

2nd Grade

Christine Dinneen
 Morgan Edwards
 Alyssa Moes
 Carolyn Raguse
 Nicole Wendeln

3rd Grade

Olivia Holleran
 Scott Ketteler
 Amber Smith
 Joe Vrbicky
 Shelley Wilczynski

4th Grade

Clara Calkins
 Jessica Loop
 Andrea Luedtke
 Taylor McMurray
 Gracie Stull

5th Grade

Jeremy Ahlman
 Michele Eggett
 Connie Peterson
 Trevor Vidlak
 Jeanne Wetzel

Intervention Support

Kelsey Ebke
 Cheryl Harriman
 Sarah Ideus
 Natalie Sharp

Specialists

Chris Wheeler- Vocal Music
 Jason Rushing- Comp. Science
 Jacob Schuelke- PE
 Heidi Shaddick- Library Media
 Molly Ebbes- Art
 Madison Enck- STEM

Instrumental-Music

Nolan Schmit- Band
 Alex Rogers- Orchestra

Custodial

Richard Branting- Bldg. Supervisor
 Dave Allen - Asst. Supervisor
 Wendy Herron
 Bill Klabenes

Kitchen

Lorrie Davis
 Bertilia Davila
 Young Gin Park
 Lindsey Kowalke
 Young Sook Kim

Supervision Support

Whitney Bumgarner
 Deb Marsicano

Table of Contents

2022-2023 Student Calendar	IFC
Introduction.....	IFC
Important Information Booklet	1
Table of Contents.....	2
Wysong School Faculty	2
Welcome	3
School Mission and Vision	3
School Mascot	3
Wysong T-shirts	3
Communication	5
PTO	7
Visitations to School	9
Volunteering.....	9
PLC Days	9
Parent Teacher Conferences.....	9
Schedules	11
Arrival for Students	11
YMCA Before/After School Care	11
Music Rehearsals.....	11
Make Up Work.....	13
Homework Expectations	13
Student Use of Telephone	15
Staying in from Recess.....	15
Bullying.....	15
Student Expectations.....	17
Field Trips	21
Arrival and Dismissal to School	21
Dismissal from School	21
Car Lane in Front of School.....	23
YMCA, Daycare Vans and Buses	23



Wysong Elementary
2022-2023



Welcome to the Wysong School Community

Our staff is excited to begin our seventh year at Wysong! We are committed to working as a team as we collaborate throughout the school, focused on creating an environment of high expectations for learning and behavior and a culture that values the unique strengths and talents of each of our students. We recognize the positive relationships we build with our students, with one another, and the partnerships with our parents, is vital in our work.

School Mission

We ARE....a team
We ARE....compassionate and kind
We ARE....always learning
We ARE WYSONG!

School Mascot and Colors

We are proud to be the Wysong Wolves! Our official school colors are royal blue and silver.

Wysong T-Shirts

Our PTO offers the opportunity to purchase Wysong clothing several times during the school year. Please watch for information coming from PTO for how to order Wysong apparel.



August 2022



SUNDAY	MONDAY	TUESDAY	WEDNESDAY	THURSDAY	FRIDAY	SATURDAY
	1	2	3	4	5	6
7	8	9	10	11	12	13
14	First Day of School 	2:18 PLC Early Release 	2:18 PLC Early Release 	18	19	20
21	22	23	24	25	26	27
28	29	2:18 PLC Early Release 	30	31		

Communication

Home and school communication is important to us. Below are ways we plan to share information with you and ways that you can be involved at school to learn more about what is happening.

1. Ask questions. We know you will have questions. Please don't hesitate to ask. Your teacher is always a good place to start but you are welcome to contact anyone that you feel may best help you. Share with us information that would be helpful for your child's teacher to know. We encourage you to begin communication with your child's teacher as school begins.
2. Communicate any changes with your child's normal plans or schedules. This ensures the teacher and office can best help your family and your child with any changes in normal plans.
3. If your child is going to be absent please either enter their absence on ParentVue or Call the Wysong School office at (436-1185).
4. The Wolf Weekly: Each Friday, the wolf weekly will be emailed to you. This newsletter will contain upcoming events, a monthly schedule, and information and news about what is happening at school. Please look for and read this each week. This will be the most consistent way that we share general information with you about school.
5. Wysong Facebook. Join the Wysong School Facebook. <https://www.facebook.com/wysongelementary/>
6. Wysong School Website. Visit our website. Each grade level will have information specific to their grade level on this site as well as other school information. <http://wp.lps.org/wysong/>
7. Wysong School Messenger System. We are fortunate to have a school message system to communicate with you. This can be used for general communication and information as well as for any emergency situation or school closure days.
we will use this system frequently for communication with your family. Please ensure any changes in your emails are shared with our school office so that we can keep your email current for this purpose.
8. **Community News:** "Community News" is a newspaper distributed by Lincoln Public Schools, free to all elementary students the first week of every month from September through May. "Community News" replaces most informational flyers and can be used as a guide to community activities for students. The monthly school lunch menu is included in each issue of "Community News."
9. **ParentVue:** Parents may access communications, attendance information and more for their child through ParentVue. A "button" linking you to ParentVue can be found on our school website.
10. **Grade Level Newsletter:** Your child's teacher will send you an email each Friday with specific information about curriculum and any other grade level details.

September 2022



SUNDAY

MONDAY

TUESDAY

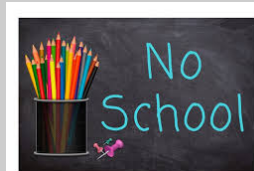
WEDNESDAY

THURSDAY

FRIDAY

SATURDAY

4

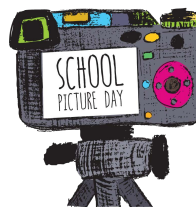


Schools are Closed

5

6

7



1

2

3

11

12

5th Grade to
Sheldon Art
Museum



13

14

15

16

17

18

19

20

21

22

23

24

25

26

2:18 PLC
Early Release



27

4th Grade to
Prairie
Immersion



28

29

30

PTO Meeting Schedule for 2022-23



TBD

Wysong PTO

The Wysong PTO is an integral part of our school community. All parents are members of the PTO! We hope you will consider being involved in any way that works for you.

The mission of our PTO is to develop a positive and welcoming culture among our families and teachers, to maximize the educational experience for our children.

Please visit the Wysong **PTO website** to learn more about PTO and get signed up to receive communication at Wysong.ptboard.com and at <http://wp.lps.org/wysong/parent-pt-info/> and **PTO Facebook** at <https://www.facebook.com/WysongPTO/>

PTO Officers for 2022-23

President	Jordin Gorka
President Elect	Megan Volpp
Past President	Whitney Bumgarner
Secretary	Kelly Rathe
Treasurer	Casey Fahrnbruch
Communications	Tyler Steenken
Volunteer Coordinator	Jess Medved
Marketing	Kali Schoettger
Website	Misty Vandergriend
Sponsorship/Fundraising	Jeremy Medved
Principal	Stephanie Drake
Assistant Principal	Jessica Hughes
Teacher Representative	Keri Daffer



October 2022



SUNDAY

MONDAY

TUESDAY

WEDNESDAY

THURSDAY

FRIDAY

SATURDAY

2

3


4


5

6

7

1

4:00-7:00
Conferences
 Parent-Teacher
Conferences

4:00-7:00
Conferences
 Parent-Teacher
Conferences

10:00
Color Run



9

10

11

12

13

14

15



No School for
Elementary Students

16

17

18

19

20

21

22



Schools are Closed



23

24


25

26

27

28

29

2:18 PLC
Early Release
 Early
Release



30

31

Visitations to School

Parents and legal guardians are welcome to visit. We recommend a 30-minute visit to the classroom. We have found this amount of time provides a good snapshot of the class and does not disrupt the learning of your child or others. Calling the office ahead of a visit is not required but is courteous and helpful for the teacher and the office staff so that we can best help you when you arrive. To protect the learning environment for your child and all children, we ask that other children not attend school as visitors to the classroom. They are welcome at school events and for a lunchroom visit.

To ensure the safety of your child and our staff, all visitors and volunteers are required to check in at the office for any visit to school. All doors to our school will remain locked at all times except the front left door to the main entrance. Once you enter this door, you will need to proceed to your left into the main office where one of our office staff will help assist you. All visitors will be asked to provide your name, the relationship to your child, and the intention of your visit. We will then will check our system to ensure whoever is here to visit, is allowed and okay to visit. Information we have in our system is provided by you as you register your child. If you are allowing someone other than the legal guardians to visit, (such as a grandparent please notify the office in advance so we know we have your permission for a visit. Otherwise, we will contact you if someone who is not listed, arrives wishing to visit. Each visitor will receive an ID badge that must be worn at all times during the visit. You will also need to return to the office to check out and return your ID badge upon the completion of your visit. Thank you for being patient and following these procedures. We want your visit to be welcoming, but also want to ensure we are being safe with all visitors.

Volunteering

Volunteers at Wysong is an important part of our school and parent partnership. Watch for more information about getting involved in PTO at Wysong. Please also refer to the LPS Important Information Booklet about how to register as a volunteer. Please visit the PTO website at Wysong.PTboard.com to learn more about volunteering with PTO opportunities.

PLC Early Release Days

(Dismissal at 2:18 p.m.-Teachers working in professional learning communities focused on improving instruction and increasing student achievement) August 30th, September 27th, October 25th, November 28th, December 13th, January 31st, February 28th, March 28th, April 25th.

Parent Teacher Conferences

Parent Teacher Conferences will be held on October 4th and 6th and February 7th and 9th.

We will utilize an on-line sign up for conferences so you can select a date and time that works for you.



November 2022



SUNDAY

MONDAY

TUESDAY

WEDNESDAY

THURSDAY

FRIDAY

SATURDAY

1

2

3

4

5

6

7

8

9

10

11

12

13

14

15

1st & 2nd Grade
to Pioneers
Park



16

1st & 2nd Grade
to Pioneers
Park



17

18

19

20

21

22

23

24

25

26



27

28

29

30



No School for
Elementary Students

2:18 PLC
Early Release



Wysong School Schedules

School Hours for Students

K - 5th Grade 9:00-3:38

Breakfast Program

K - 5th Grade 8:30-8:55

Lunch Schedule

Kindergarten.....11:05

Second Grade.....11:25

First Grade11:45

Third Grade12:05

Fourth Grade.....12:25

Fifth Grade.....12:45



Specials Classes Schedule

(Art, Computer, Media, Music, PE)

Fifth Grade..... 9:00-9:50

Third Grade..... 9:55-10:45

Fourth Grade10:50-11:40

Kindergarten..... 12:55-1:45

Second Grade 1:55-2:45

First Grade 2:50-3:35

Arrival for Students

Students may arrive to school beginning at 8:45. Students should not arrive prior to 8:45 as we are not able to provide supervision until this time. At 8:45 a supervisor will allow students to enter the building and will be supervised in the school. At 8:53 teachers will pick up their students and walk them to their classrooms. Students who arrive at school after the 8:53 bell should enter the front doors and proceed directly to their classroom. Students are considered tardy if they are not in their classroom by the 9:00 bell.

YMCA Before and After School Care

Before school care begins at 7:15. Students in the before school YMCA program will join their homeroom class shortly before students proceed to their classrooms at 8:53. After school care for the YMCA ends at 5:45. Students in the afterschool YMCA program will dismiss directly from their classroom at the end of the day and go directly to the YMCA program in the Multipurpose Room.

Music Rehearsals for 4th and 5th graders

At this time, the Chorus, Orchestra, and Band Rehearsals have not yet been finalized. Please watch for information from our instrumental music staff regarding this information.

If you have questions, please contact the following teachers:

Nolan Schmit (Band) nschmit@lps.org

Alex Rogers (Orchestra) rrogers@lps.org

Chris Wheeler (Chorus) cwheele@lps.org



December 2022



SUNDAY

MONDAY

TUESDAY

WEDNESDAY

THURSDAY

FRIDAY

SATURDAY

4

6:00 Winter
Band Concert



WINTER CONCERT



5

6

7

1

2

3

11

12

13

2:18 PLC
Early Release

Early
Release



14

6:00 Winter
Orchestra
Concert



WINTER CONCERT



15

16

17

18

19

20

21

22

23

24



Winter
Break

Schools are Closed
Winter Break

25

26

27

28

29

30

31



Schools are Closed - Winter Break

Make-up Work

We appreciate parents' conscientious regard for picking up homework or make up work for their child. The gathering of materials and the communication of the request take time, so the guidelines below will help us serve all children the best.

Unless a student has been absent for more than two days, we do not take requests for assignments. Students and teachers will work together as the student returns to identify the learning and assignments they have missed. We find that it most helpful for student understanding to talk through the assignment with their teachers rather than trying to complete this without the opportunity to ensure they have learned the information.

When a student is absent more than two days, we encourage parents to call school to request make up work and set a time to pick it up. Please call before 9:00 a.m. so we can communicate this to your child's teacher so they can have time to put this together.

If a student is going to be absent from school because of travel, it is very difficult for teachers to give the correct assignments in advance. Again, this is because we want to ensure your child and your teacher have had time to work together to ensure they have learned the material. Some things your child could do while on a trip are, to write about their experience, practice math facts and do number games and read. When your family returns, teach your child to ask for the make-up work. Teachers will help your child with a plan to make up the assignments missed and also to ensure your child has had an opportunity to learn the material covered during their absence.

Wysong Homework Expectations

Students in grades K-5 will have math homework almost every day. This homework is intended to be a reinforcement of the skills students have learned in class and should be returned the following day when possible. In most cases students should be able to complete this homework without much assistance in a short period of time. Reading homework will vary from day to day and by grade. It may consist of reading fluency practice, spelling, high frequency words, vocabulary, and at times, reading a literature story to prepare for discussion in class. It is important for students to develop a routine and structure for completing homework as it builds strong study skills and reinforces skills learned at school. Each student will use a Homework Folder that we will provide for them. Our goal is that this will help them learn responsibility and also a good system for organization and completion of work. It also should help you to know what homework is needed for completion.

If your child forgets their homework, we ask that they not return to pick it up. Their teacher will help them find a time the following day to complete it or send it home the following day.

January 2023



SUNDAY	MONDAY	TUESDAY	WEDNESDAY	THURSDAY	FRIDAY	SATURDAY
1	2	3	4	5	6	7
	<div><div>Schools are Closed - Winter Break</div></div>					
8	9	10	11	12	13	14
					<div></div>	
15	16	17	18	19	20	21
<div><div>Schools are Closed</div></div>						
22	23	24	25	26	27	28
				<div>4th Grade to Quilt Museum</div> <div></div>		
29	30	31				
		<div>2:18 PLC Early Release</div> <div></div>				

Student Use of Telephone

Students will be permitted to call their parents from school if needed. We ask that they request permission from their teacher to come to the office to call. This way we can best support the communication and assist with any special plans.

When you call school, we do not interrupt the classrooms with phone calls to students or teachers, but will leave a message. We appreciate that after school plans are set in place with your child before they leave for school so they are clear about their plan. If there is ever any change in their normal arrival or dismissal plan, please notify the office and we will also communicate this with their teacher.



Staying in from Recess

We know it is important for students to have exercise and social interaction time. Each grade will have their own grade level recess and a recess during their lunch block of time. It will be our practice that we do not routinely keep children in from recess in order to have them complete unfinished work or as a consequence for missing homework. This does not mean we would not ever ask them to stay in for a day or two to work with a teacher or after a trip or extended absence from school or to try to get some additional help but it will not be a routine practice we would use. If we are asking your child to stay in from recess for any of these reasons, we will be careful to communicate this with you or make alternative plans if missing homework or other concerns exist.

Bullying

If you feel that your child is being bullied by peers, please contact your child's teacher or the building principal, Stephanie Drake.

All reported incidences of bullying/unsafe behavior will follow the protocol outlined in Lincoln Public Schools Board Policy 5482: Anti-Bullying Policy.

Bullying is unwanted, aggressive behavior among school aged children that involves a real or perceived power imbalance. The behavior is repeated, or has the potential to be repeated, over time.

In order to be considered bullying, the behavior must include:

- Imbalance of Power: Kids who bully use their power—such as physical strength, access to embarrassing information, or popularity—to control or harm others. Power imbalances can change over time and in different situations, even if they involve the same people.
- Repetition: Bullying behaviors happen more than once or have the potential to happen more than once.
- Hurtful aggressive physical and/or verbal behavior.

Bullying includes actions such as making threats, spreading rumors, attacking someone physically or verbally, and excluding someone from a group on purpose. As an added prevention piece, please discuss with your child adults in the building who they can talk to if they feel that they are being bullied or are in an unsafe situation. These people may include, but are not limited to, their teacher, the administrator, school counselor, school psychologist, school social worker or any other adult in the building that they have built a positive relationship with. Students are taught about what bullying looks like and sounds like, along with how to advocate for themselves through the District's Second Step program.

February 2023



SUNDAY

MONDAY

TUESDAY

WEDNESDAY

THURSDAY

FRIDAY

SATURDAY

5

6

7

1

2

3

4

4:00-7:00
Conferences
 Parent-Teacher
Conferences

4th Grade to
Young
People's
Concert
 Young People's Concert

4:00-7:00
Conferences
 Parent-Teacher
Conferences

12

13

14

15

16

17

18

No School
Teacher
Work Day
No School for
Elementary Students

19

20

21

22

23

24

25

**No
School**
Schools are Closed

26

27

28

2:18 PLC
Early Release
 **Early
Release**

Student Expectations and School Management of Behavior

At Wysong we teach common, school wide expectations for learning and behavior. This will ensure your child and our staff have consistent expectations across our school and that all the adult learners can recognize and support positive behaviors as well as help teach students appropriate expectations that will help our school community to be most conducive to learning.

Wysong Common Area Expectations

	Safe	Respectful	Responsible
Classroom	<ul style="list-style-type: none"> -Keep hands, feet, objects to self -Use classroom materials appropriately -Listen to adult directions at all times 	<ul style="list-style-type: none"> -Focus on speaker -Let the adult be in charge -Respect others' learning environment -Speak and respond appropriately 	<ul style="list-style-type: none"> -Enter classroom ready to learn -Be prepared and do your best -Follow directions quickly and exactly
Hallways	<ul style="list-style-type: none"> -Keep hands, feet and objects to self -Walk single file in line order on the right side 	<ul style="list-style-type: none"> -Voices at level 1 -Keep hands and feet off walls -Smiles, winks and waves are welcome 	<ul style="list-style-type: none"> -Stay in line order with your class -Go directly to your destination -Use drinking fountain appropriately
Bathrooms	<ul style="list-style-type: none"> -Keep feet on floor -Keep water in sink 	<ul style="list-style-type: none"> -Keep bathroom clean -Voices at level 1 -Give others privacy -Respect school property 	<ul style="list-style-type: none"> -Use bathroom closest to classroom -Use 1 pump of soap and 2 towels -Towels in trash can -Flush toilet after use -Get adult permission to be in the bathroom
Cafeteria	<ul style="list-style-type: none"> -Sit on your pockets, feet on the floor, facing forward -Walk -Eat only your food -Sharing food is not allowed 	<ul style="list-style-type: none"> -No saving seats -Use quiet voices with people at your table only -Respond to signals for attention -Use manners -Use Level 3 voice 	<ul style="list-style-type: none"> -Focus on eating -Push in your chair when leaving -Pick up after yourself -Follow adult direction
Playground	<ul style="list-style-type: none"> -No play fighting -Sticks and other objects stay on the ground -Play appropriately on the equipment 	<ul style="list-style-type: none"> -Play fairly -Be a good sport -Follow all supervisor directions -Include others -Recess is fun, not a competition 	<ul style="list-style-type: none"> -Clean up and line up right away at bell/whistle -Take care of equipment -Dress appropriately for weather
Common Areas	<ul style="list-style-type: none"> -Keep hands, feet and objects to yourself 	<ul style="list-style-type: none"> -Voice level 1/2 -Respect others' learning environment 	<ul style="list-style-type: none"> -Do your job -Stay in your area -Follow adult directions
Assemblies	<ul style="list-style-type: none"> -Keep hands and feet to yourself 	<ul style="list-style-type: none"> -Voice level 1 -Be a focused listener -Sit flat on "pockets" -Follow signals for attention 	<ul style="list-style-type: none"> -Sit in line order -Use an appropriate response

March 2023



SUNDAY

MONDAY

TUESDAY

WEDNESDAY

THURSDAY

FRIDAY

SATURDAY

1

2

3

4

5

6

7

8

9

10

11

12

13

14

15

16

17

18



19

20

21

22

23

24

25

Kindergarten to
Lincoln Children's
Museum



26

27

28

29

30

31

2:18 PLC
Early Release



Arrival	-Use sidewalks and crosswalks -Follow your before school plan right away -Walk your bike	-Keep hands, feet and objects to self. -Voice level 2	-Stand in grade level line -Walk directly to the gym
Dismissal	-Use sidewalks and crosswalks -Follow your after school plan right away -Check out with your teacher -Walk your bike	-Keep hands, feet and objects to self -Voice level 2	-Pack up all belongings and put in back-pack -Leave on time with your class
Field Trips/Busses	-Keep hands, feet and objects to yourself -Stay seated on your pockets	-Follow adult directions -Voice level 2	-Represent Wysong school in a positive way

Wysong School uses a school-wide focus on three “Life Goals”. These are called “Life Goals” because if we can be successful in using them, we are much more likely to be successful in school, our jobs, and other areas of our lives.

Here are the three Life Goals:

I can be productive and follow directions even if I am mad (overwhelmed by my feelings).

I can be productive and follow directions even when others around me are not okay.

I can be productive and follow directions even when I don’t want to (even if it is difficult).

There are also two expectations for all of us at our school that protect our learning environment and help make Wysong a great place for students to be and learn. “It is never okay to be hurtful and it is never okay to be disruptive”.

In-Class Movement: Students are given a reminder when they are having difficulty following a school expectation. If they continue to have difficulty, they are then asked to move to a different seat in their classroom. We refer to this as an “In-Class Movement.” Students are not in trouble. This change in seating allows teachers and students to have a private conversation to process together. Students may return to their original seat.

Out-of-Class Movement: If students continue to have difficulty making successful choices, they will be directed to an “Out-Of-Class Movement.” This allows for another opportunity outside of their current classroom to reflect on the appropriate choices to be successful. When students demonstrate they are ready to make successful choices, they return to their classroom. The teacher will process with the student. When an Out-Of-Class Movement occurs, parents are contacted by the teacher.

Office Referral: Some behaviors may require immediate support or assistance from the administration. Examples of an Office Referral might include: continued refusal to follow adult directions, disrespectful or hurtful language, or physical harm to another student or staff. When an Office Referral occurs, parents are contacted.

We believe in a positive school climate and will work hard to reinforce and recognize students who display good learning skills and interactions with others.

April 2023



SUNDAY

MONDAY






TUESDAY

WEDNESDAY

THURSDAY

FRIDAY

SATURDAY

						1
2	3	4	5	6	7  Schools are Closed	8
9  Schools are Closed	10	11	12	13	14	15
16	17	18	19	20	21	22
23	24	25 2:18 PLC Early Release 	26	27  No School for Elementary Students	28  Schools are Closed	29
30						

Arrival to School

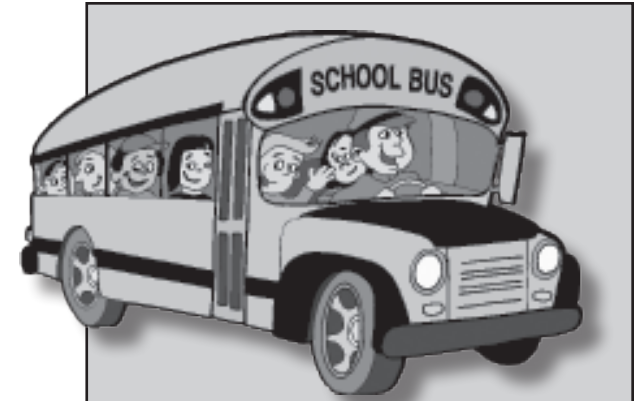
Before School Breakfast will be provided each morning between 8:30 and 8:55. Students may choose to eat breakfast any day they wish and do not have to sign up in advance. Students may enter the front doors as early as 8:30 and proceed directly to the multipurpose room (lunch room). Depending on when students finish eating, they may be dismissed to join their class.

Dismissal from School

At the 3:38 dismissal time, each grade level will exit their grade with their teacher, from the front of school nearest their grade level location. Please see the attached map to show the location where each grade level will exit.

Some of our students may meet siblings or friends to walk home with for safety. We strongly encourage this practice! It will be important for families to help their children make a plan for where to meet their siblings or friends outside at the end of the day. All teachers will be supervising outside to help ensure all students are connected. Students who ride daycare vans will proceed directly to the gym. We will dismiss them in lines as their vans arrive. Students in the YMCA after school program will go directly to the multipurpose room.

- All students must go directly home
- School Campus (including the playground) is closed until 6:00 p.m. except for use by the YMCA. Reservations for playground space should be entered in the district Archibus system.



Field Trips

Field trips provide students with opportunities to learn about our community and more in-depth about an area of study. School buses are used to transport students on field trips. Parents/Guardians are asked to indicate permission on the Census Form at the beginning of the school year giving permission for students to participate in field trips throughout the school year. Parents will be notified before each field trip as to the destination, date, and time of the trip. Students are expected to demonstrate appropriate conduct, as a basis for participation on field trips. In most cases, the places students visit are not able to accommodate parent visitors and a cost is often required. Therefore we would ask parents not to plan to attend field trips unless invited by the teachers.

May 2023



SUNDAY	MONDAY	TUESDAY	WEDNESDAY	THURSDAY	FRIDAY	SATURDAY
	1 BAND CONCERT Band Concert 6:00	2	3	4 Orchestra Concert 6:00	5 Family Fun Night!	6
7	8 5th Grade to Earth Wellness Festival	9 5th Grade to Earth Wellness Festival	10	11	12	13
14	15	16	17	18	19	20
21	22	23	24	25 Last Day of School 	26	27
28	29	30	31			

Car Lane in Front of School

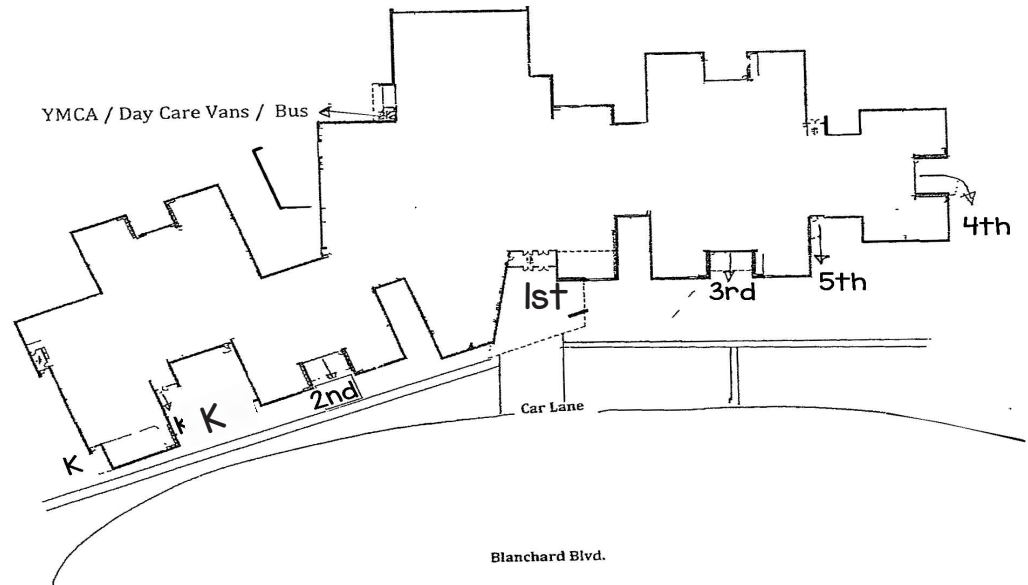
Some families will need to pick up or drop off in the front of school in the car lane. We are fortunate the design of our school includes a pick up and drop off lane in the front of school. It is designed so you can pull in, wait in your car for your child to exit or enter your car, and other cars can still use the outside lane to move forward or exit the school car lane.

In order for the traffic flow to continue to move, we ask that you **not leave your car unattended** in the front car lane. We also ask that you pull up as far as you can before stopping. This will allow other cars to continue to pull in and make the traffic flow better. Please use caution, when pulling in or out. Mrs. Hughes and I will be outside each day to help supervise and help students.

Please do not get out of your car! ☺ We also ask that you teach your child to look for your car and never run to it.

We will always walk. We ask that you only allow your child to enter or exit your car on the passenger side. This is for your child's safety. If you are walking from Blanchard to the school, please use a sidewalk and do not walk through the car lane.

3:38 Dismissal Locations
All grade levels will dismiss from their grade level area.



YMCA, Daycare Vans, and School Buses

Students who attend the YMCA program, drop off and pick up their students on the south end of the property, entering off Bridle Lane. There is a lane that leads to door #11 where the YMCA program is located. You may park in this lane as you pick up or drop off, (unless it is at dismissal time). After 4:00 p.m., is okay to park and walk to get your child as our Daycare vans and bus will have left by this time. This door will be locked so you will need to be let in when you arrive. A YMCA staff member will be present to facilitate this. Students who ride daycare vans or a bus, will also use this location to drop off and pick up their students. I will send detailed information to the daycares about this traffic plan.

Prior to Open House, we will send each family a Google Form to fill out for their Arrival/Dismissal Plan. This form will help us to know your child's usual plan of how they will arrive and leave school. If you ever have a change in their normal dismissal plan, please call the main office and let us know this. We will then ensure their teacher and all supervisors know how to assist them with a different plan for that day.

It is our hope that these procedures will help you and your students feel confident and safe when arriving and leaving school. I also ask you be patient as we try these procedures and work to refine them. I will communicate closely with you as school begins to keep you informed or provide additional information.

LINCOLN BOARD OF EDUCATION 5905 O Street • Lincoln, NE 68510



Barbara Baier
Lanny Boswell

Kathy Danek
Connie Duncan
Don Mayhew

Annie Mumgaard
Bob Rauner

Dr. Paul Gausman Superintendent

5/17

The Lincoln Public School District does not discriminate on the basis of race, color, national origin, religion, sex, marital status, sexual orientation, disability, age, pregnancy, childbirth or related medical condition, genetic information, citizenship status or economic status in its programs, activities and employment.