



# **School Calendar Student & Parent Handbook**

## **Roper Elementary School**

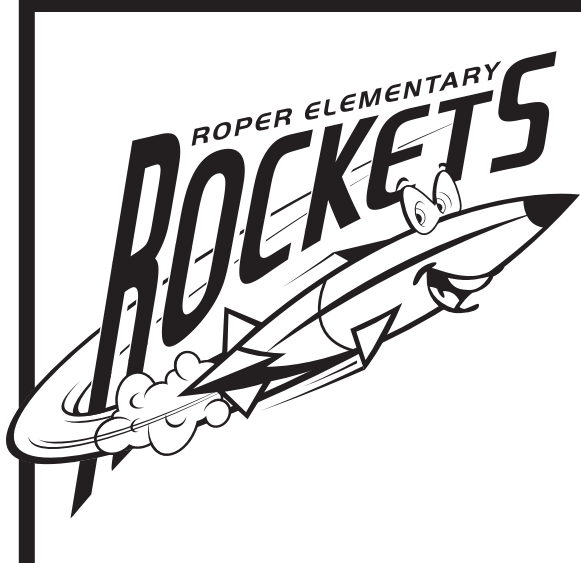
2323 S. Coddington Avenue • Phone 402-436-1170

Website: <https://roper.lps.org> • Fax: 402-458-3270

Lynn Fuller, Principal • [lfuller@lps.org](mailto:lfuller@lps.org)

### **Rocketing Students Toward Success!**

**\*ALL SCHEDULED EVENTS ARE TENTATIVE AND SUBJECT TO CHANGE.**



Roper Elementary

# Mission Statement

**Rocketing Students Toward Success**

**R**ealizing potential

**O**pportunities for all

**P**arents, educators, children, community working together

**E**ncouraging each other

**R**especting differences

## Roper School Improvement Goals:

Students at each grade level will demonstrate growth in Fluency and Number Sense, working to be on track for the next grade level.

**For the most up-to-date information log on to**

Roper website: <https://roper.lps.org/>

LPS web site: <https://lps.org/>

### **Office Hours**

7:30 am – 4:15 pm

Phone: 402-436-1170



# 2022-2023 Student Calendar



Lincoln Public Schools  
Lincoln, Nebraska



Approved 4/20

JULY 2022						
S	M	T	W	T	F	S
					1	2
3	4	5	6	7	8	9
10	11	12	13	14	15	16
17	18	19	20	21	22	23
24	25	26	27	28	29	30
31						

AUGUST 2022						
S	M	T	W	T	F	S
	1	2	3	4	5	6
7	8	9	10	11	12	13
14	15	16	17	18	19	20
21	22	23	24	25	26	27
28	29	30	31			

SEPTEMBER 2022						
S	M	T	W	T	F	S
				1	2	3
4	5	6	7	8	9	10
11	12	13	14	15	16	17
18	19	20	21	22	23	24
25	26	27	28	29	30	

OCTOBER 2022						
S	M	T	W	T	F	S
						1
2	3	4	5	6	7	8
9	10	11	12	13	14	15
16	17	18	19	20	21	22
23	24	25	26	27	28	29
30	31					

NOVEMBER 2022						
S	M	T	W	T	F	S
		1	2	3	4	5
6	7	8	9	10	11	12
13	14	15	16	17	18	19
20	21	22	23	24	25	26
27	28	29	30			

DECEMBER 2022						
S	M	T	W	T	F	S
				1	2	3
4	5	6	7	8	9	10
11	12	13	14	15	16	17
18	19	20	21	22	23	24
25	26	27	28	29	30	31

JANUARY 2023						
S	M	T	W	T	F	S
1	2	3	4	5	6	7
8	9	10	11	12	13	14
15	16	17	18	19	20	21
22	23	24	25	26	27	28
29	30	31				

FEBRUARY 2023						
S	M	T	W	T	F	S
				1	2	3
4	5	6	7	8	9	10
11	12	13	14	15	16	17
18	19	20	21	22	23	24
25	26	27	28			

MARCH 2023						
S	M	T	W	T	F	S
				1	2	3
4	5	6	7	8	9	10
11	12	13	14	15	16	17
18	19	20	21	22	23	24
25	26	27	28	29	30	31

APRIL 2023						
S	M	T	W	T	F	S
						1
2	3	4	5	6	7	8
9	10	11	12	13	14	15
16	17	18	19	20	21	22
23	24	25	26	27	28	29
30						

MAY 2023						
S	M	T	W	T	F	S
		1	2	3	4	5
6	7	8	9	10	11	12
13	14	15	16	17	18	19
20	21	22	23	24	25	26
27	28	29	30	31		

JUNE 2023						
S	M	T	W	T	F	S
				1	2	3
4	5	6	7	8	9	10
11	12	13	14	15	16	17
18	19	20	21	22	23	24
25	26	27	28	29	30	

- First and last days of class for students
- All schools not in session
- All schools will dismiss early, check school building schedule
- Elementary school students NOT in attendance (plan days)
- Quarter start dates
- Quarter end dates

Rev. 4/8/22

## GRADUATION DATES

Thursday, May 18, 2023: Yankee Hill Program  
Thursday, May 18, 2023: Independence Academy  
Thursday, May 25, 2023: Bryan Community Focus Program  
Friday, Saturday and Sunday, May 26-28, 2023  
Fri: LNS | Sat: East/LHS/LSE | Sun: LNE/LSW

**Calendar Options for Families:** The Lincoln Public Schools District understands and appreciates that our community has a wide variety of rich and varied religious celebrations and observances. In the event families recognize these holidays, parents should notify schools. Students will be given excused absences and allowed reasonable opportunities to make up any schoolwork missed.

**Note:** Changes to the calendar may occur as a result of inclement weather or other circumstances. If sufficient school time is lost as a result of calendar changes, and it brings the total number of school hours for the year below the state minimum requirements, the Superintendent will implement a plan for making up this time, which may require additional minutes added to the day, additional days added to the calendar, days previously identified as non-student days re-scheduled as student day, or other appropriate calendar or schedule measures.

## A Message from Principal Lynn Fuller

It is a great privilege to be the Principal at Roper Elementary School. For more than twenty five years, Roper has been an important part of the West A Community. We appreciate the close relationship we have with the community and are continually humbled by your generosity and support.

The dedication of the staff at Roper is inspiring. Teachers care deeply for students and work hard to help them succeed. Our priority is on student learning, insuring every student is challenged to achieve or exceed grade level, district and state expectations. We accept no limits on the learning potential of any child.

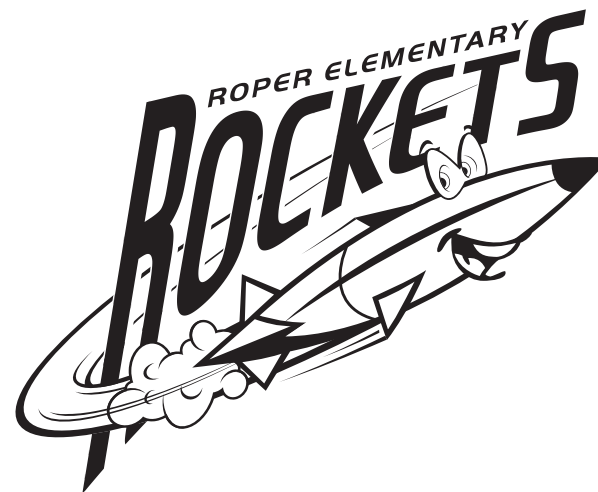
At Roper, we provide a safe, orderly and respectful environment, which promotes high levels of student engagement. We honor the diversity and unique talents of all of our students, embracing the different cultures and backgrounds that represent our community.

We are excited to offer students daily experiences in art, computer science, library media, music, physical education and wellness. These enriching opportunities extend the learning that students are provided in the classroom and often inspire lifelong pursuits. This is just part of our commitment to serving your child's unique academic, behavioral, social and emotional needs.

We look forward to partnering with you in the year ahead. Working together, we can provide your child(ren) with exactly what they need to be successful this school year and for years to come. If you have questions about your child at any time, please don't hesitate to contact your student's teacher or myself at 402-436-1170.

Sincerely,  
Dr. Lynn Fuller, Principal  
Roper Elementary School

**PLEASE NOTE:** All procedures, guidelines and dates outlined in these documents are subject to change, based on recommendations and health directives put into place by the Lincoln Lancaster County Health Department (LLCHD) and the Nebraska Department of Education. Please keep in mind that, as with our Standard Response Protocols, every Lincoln Public Schools building or program which provides services may not always be in the same risk category.



## Office

Lynn Fuller, Principal..... lfuller@lps.org  
Kathy Moldenhauer, Asst. Principal... kmoldenh@lps.org  
Shawn Carlson, Special Ed. Coordinator .. shawnc@lps.org  
Laura Kortum, Secretary III ..... lkortum@lps.org  
Nichole Bernt, Secretary II..... nbernt@lps.org  
Rachel Schrunck, Secretary II ..... rschrun@lps.org

## Kindergarten Teachers

Jerri Graham ..... jschinc@lps.org  
Elizabeth Hanks..... lhanks@lps.org  
Lisa Kistaitis ..... lkistai@lps.org  
Maddy Nelson ..... mnelson6@lps.org  
Kathy Sechrest..... ksech@lps.org

## First Grade Teachers

Becky Bricker ..... bbricker@lps.org  
Amy Emanuel ..... aengqui@lps.org  
Colbi Larkins ..... clarkins@lps.org  
Robyn Robinson..... rrobins@lps.org  
Cindy Williams ..... lwillia1@lps.org

## Second Grade Teachers

Amy Broeker ..... abroeker@lps.org  
Katelynn Charroin..... khuskey@lps.org  
Lacey West ..... lwest2@lps.org  
Tiffany Patrick..... tpatric@lps.org  
Karli Suarez..... ksuaraz@lps.org

## School Social Worker

Renee King..... rking4@lps.org

## Third Grade Teachers

Lindsey Anderson ..... landers7@lps.org  
Nikky French..... nfrench@lps.org  
Janell Grgurich..... jgrguric@lps.org  
Lacey Lane ..... llane@lps.org  
Jennifer Reinboth ..... jreinbot@lps.org

## Fourth Grade Teachers

Jerry Dittenber..... jditten2@lps.org  
Christine Genrich..... cmckinn@lps.org  
Tori Hupf..... thupf@lps.org  
MiKayla Jansen..... mnorthu@lps.org  
Lacey Palmer..... lpalmer2@lps.org  
Alexys Pryor..... lpryor2@lps.org

## Fifth Grade Teachers

Daniel Flynn..... dflynn@lps.org  
Sarah Holz ..... sholz@lps.org  
Tracy Kastl..... tkastl3@lps.org  
Jordyn Kleinow ..... jkleinow@lps.org  
Casey Sorensen ..... csorensen@lps.org  
Samone Tate ..... state@lps.org

## Specialists

Peggy Dynek, Media ..... mdynek@lps.org  
Kate Gracie, Art ..... kgracie@lps.org  
Chelsea Rolofson, PE ..... crolofs@lps.org  
Tyler Johnson, Wellness/Comp. .... tjohnso7@lps.org  
Marli Kulhanek, Art ..... mkulhane@lps.org  
Julie Ruppelt, Music ..... jruppelt@lps.org  
Shelly Jones, Gifted ..... sjones4@lps.org

## School Psychologist

Megan Schwank ..... mschwan2@lps.org

## Special Education Teachers

Mary Boyle ..... mboyle@lps.org  
Riley Cosson ..... rcosson@lps.org  
Megan Danielson..... mdaniel@lps.org  
Sammy From ..... sfrom@lps.org  
Hannah Phillips..... hphillip@lps.org  
Kati Prokop ..... kwobig2@lps.org

## Speech/Language Pathologists

Karen Linderman ..... klinder@lps.org

## ELL Teachers

Pam Piechota..... ppiech@lps.org  
Ann Schmer ..... aschmer@lps.org  
Stephanie Shunkwiler..... sshunkwi@lps.org

## PreSchool/Early Childhood Teachers

Tammy Chisholm (AM) ..... tchisho@lps.org  
Pam Harrell (AM)..... pharrell@lps.org  
Linda Gregory (PM) ..... lgregory@lps.org  
Taylor Tiefenthaler (PM)..... ttiefent@lps.org  
Abby Stogdill (ECSE)..... astogdil@lps.org

## Intervention

Kelli Joe..... kjoe@lps.org  
Terry Ough..... tough@lps.org  
Krista Van Pelt..... kvanpel@lps.org  
Courtney Fitzgerald-Stevens..... cfitzge@lps.org

## School Counselor

Tristen Colclasure ..... tcolclas@lps.org



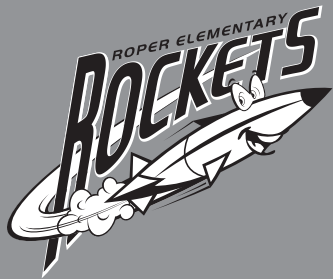
# August 2022



SUNDAY	MONDAY	TUESDAY	WEDNESDAY	THURSDAY	FRIDAY	SATURDAY
	1	2	3	4	5	6
7	8	9	10	11	12	13
14	15 First Day of School  1:33 release	16  1:33 release	17  1:33 release	18	19	20
21	22	23	24	25	26	27
28	29	30 PLC Day, Early Dismissal  1:33 release	31			

L I N C O L N   P U B L I C   S C H O O L S   •   L I N C O L N ,   N E B R A S K A

**\*ALL SCHEDULED EVENTS ARE TENTATIVE AND SUBJECT TO CHANGE.**



## School Improvement Goal

Students at each grade level will demonstrate growth in Fluency and Number Sense, working to be on track for the next grade level.

### Welcome to Roper Elementary School!

Our priority at Roper is to focus on student learning, ensuring every student is challenged to achieve or exceed grade level district and state expectations. We accept no limits on the learning potential of any child. Roper is organized into grade level instructional teams: Preschool through fifth grade. Staff works closely with parents, as we know that a strong parent, school relationship is critical to ensure student success.



### Intent of Student Handbook

This handbook is intended for students, parents, and staff as a guide to the rules, regulations, and general information about Roper Elementary. Each student is responsible for becoming familiar with the handbook and knowing the information contained within.

This handbook does not create a “contract”. The administration reserves the right to make decisions and rule revisions at any time to implement the educational program and to assure the well being of all students. The administration will be responsible for interpreting the rules contained in the handbook. Should the situation or circumstances arise that is not specifically covered in this handbook, the administration will make a decision based upon all applicable school district policies, and state and federal statutes and regulations.

## As A Professional Learning Community, We Envision A School In Which Staff...

- Collaborates, shares and accepts responsibility for stakeholders
- Adapts, changes, grows, provides leadership and learns together
- Sets high expectations for all students and staff
- Partners with community to meet educational and emotional needs of all students
- Implements instructional practices that are data-driven and research-based
- Is reflective and strategic about providing an equitable experience for all students
- Celebrates accomplishments, growth and success

# September 2022



SUNDAY	MONDAY	TUESDAY	WEDNESDAY	THURSDAY	FRIDAY	SATURDAY
				1	2	3
4	5 Schools are Closed	6	7	8	9	10
11	12	13	14	15	16	17
18	19	20	21	22	23	24
25	26	27 PLC Day, Early Dismissal  1:33 release	28	29 School Photos	30	

L I N C O L N   P U B L I C   S C H O O L S   •   L I N C O L N ,   N E B R A S K A

# Hello Roper Families!

A big welcome back to our returning families and a warm welcome to new families joining our community. The Roper Elementary PTO looks forward to a successful 2022-2023 school year with you. The PTO's goal is to support school staff in creating a safe and fun learning environment for all students as they "rocket toward success." There are many PTO sponsored events and activities throughout the year that help meet this goal:

- Buses for field trips
- School library support (book fairs, Read to Succeed Incentives)
- Teacher appreciation (conference meals, Teacher Appreciation Week, end of year luncheon)
- Social events (family fun nights)
- Educational materials for students
- And the list goes on!

For the last few years we have been raising funds to make our playgrounds more inclusive and accessible for all students. Your hard work and fundraising is paying off! The district is in the process of ordering some pieces of inclusive play equipment. We will continue to work on playground improvements and expand our focus to include:

1. Creating a fund to help students with food insecurity.
2. Supporting school and classroom enhancements.

We need your help. The PTO is powered by parents and we can't achieve our goals without the support of Roper families. Every family is unique, with its own priorities, needs, talents and time constraints. That's why, throughout the year we'll have many different ways for parents and families to be involved in the PTO and support our school. Get Involved Today! Join PTBoard to stay up to date on all PTO activities.

- Go to <https://roper.ptboard.com> or scan below QR code
- Click "Sign Up" link to sign up (For mobile phone, click top right menu, then "Sign Up" link)
- After signing in to <https://roper.ptboard.com>, enter code FNBWC8 to join

Follow us on Facebook: [facebook.com/ROPERPTO](https://facebook.com/ROPERPTO)  
Or E-mail us: [roperpto@gmail.com](mailto:roperpto@gmail.com)

## Quarterly Public Meetings:

August 29  
October 24  
January 30  
March 27

## 2022-2023 PTO Board Members

President: Jessie James, Erin Branch  
Vice President: Heather Stewart, Amanda Kester  
Secretary: Jennifer Campbell  
Treasurer: Danielle Bauer, Adam Rhoads



## Get Involved Today

Facebook: [facebook.com/ROPERPTO](https://facebook.com/ROPERPTO)

E-mail: [roperpto@gmail.com](mailto:roperpto@gmail.com)

Website: [roper.ptboard.com](https://roper.ptboard.com)

Code: 9QBSRP



# October 2022



SUNDAY	MONDAY	TUESDAY	WEDNESDAY	THURSDAY	FRIDAY	SATURDAY
						1
2	3	4	5	6	7	8
9	10	11	12	13	14 1st Qtr Ends  No School for Elementary Students	15
16	17 Schools are Closed	18	19 2nd Qtr Begins	20	21	22
23	24	25 PLC Day, Early Dismissal Parent/Teacher Conferences 3:00 - 7:00  1:33 release	26	27 Parent/Teacher Conferences 3:00 - 7:00	28	29
30	31					

L I N C O L N , P U B L I C S C H O O L S • L I N C O L N , N E B R A S K A

\*ALL SCHEDULED EVENTS ARE TENTATIVE AND SUBJECT TO CHANGE.

# Arrival and Dismissal Plan

## ARRIVAL PROCEDURES

- The Roper Elementary School campus is closed until 7:30 a.m.
- Students arriving for breakfast should not arrive before 7:30 a.m., as there is no supervision until that time.

## ARRIVAL

7:30 Breakfast—Enter through Door #1 – East

7:50 Student Arrival – not eating breakfast.

Go directly to designated areas.

### Arrival Doors

Kindergarten - Doors #25 & #27

1st Grade - Doors #2 & #3

2nd Grade - Door #6

3rd Grade - Door #1

4th Grade - Door #17

5th Grade - Door #16

8:10 School Begins. Students meet teachers at arrival doors.

8:10 - 8:15 arrivals - Door #1 & #16

8:15 – Tardy Bell

- Students may enter either of the main entrances, Door #1 or #16 if it is raining or snowing.

## Temperature Guidance - Arrival

### Arrival

<20\* Students wait inside the arrival doors starting at 7:45. Willard will keep their students until 8:00 and will walk them through the building to get to their arrival areas.

Reminder - students arriving before 7:45 need to go to breakfast through Door 1. That is the only place where we have supervision at that time.

## DISMISSAL PROCEDURES

All students are dismissed from the building at 2:53 p.m.

- All students must go directly home or to a school sanctioned after school activity.
- Teachers will escort students out their designated exit door.
- School Campus (including the playground) is closed until 4:30 p.m. except for use by school childcare and clubs. Reservations for rooms/playground should be entered in the district Archibus system.

## DISMISSAL

Our dismissal bell rings at **2:53**. Students are learning in classrooms until the bell rings. Students will start putting things away after the bell. Once they have gathered their things, they will be escorted outside by a teacher. All students must go directly home, to daycare, or an on-site afterschool program.

**Our campus is closed after dismissal until 4:30 PM**, including the playground, except for use with school related activities or the Willard Community Center's School's Out program.

### Dismissal Doors

Kindergarten – Doors #25 & #27

First Grade – Doors #2 and #3

Second Grade – Door #6

Third Grade – Door #1

Fourth Grade – Door #17

Fifth Grade – Door #16

Students should be picked up no later than 3:15. At this time, students will be escorted to the office. Parents/guardians will need to come in to the Main Office (Door #1) to pick up students. You will be asked to sign them out.

In the event that students are not picked up by 3:30 PM, and the office is unable to contact a parent or another adult listed as an emergency contact, for your safety, and the safety of your children, the police may be notified.





# November 2022



SUNDAY	MONDAY	TUESDAY	WEDNESDAY	THURSDAY	FRIDAY	SATURDAY
		1	2	3	4	5
6	7	8	9	10	11	12
13	14	15	16	17	18	19
20	21	22	23	24	25	26
			Schools are Closed			
27	28	29	30			
	No School for Elementary Students	PLC Day, Early Dismissal  Chorus Concert 6:00  1:33 release				

L I N C O L N   P U B L I C   S C H O O L S   •   L I N C O L N ,   N E B R A S K A

**\*ALL SCHEDULED EVENTS ARE TENTATIVE AND SUBJECT TO CHANGE.**

## BUS TRANSPORTATION

Lincoln Public Schools provides limited bussing based on student needs. Bus service is a privilege. Students are expected to maintain good behavior and follow safety rules at all times on the bus. If you have questions about qualifying for bus eligibility, please ask one of the administrators listed below.

- Students are to walk to their assigned grade level waiting area upon arrival. Teachers will meet them there.
- Some students will be escorted from the bus to their classrooms.
- At the end of the day, students will be escorted to their bus by teachers.
- If a student will not be riding the bus home, they must have a signed note from parents/guardians.

## TRAFFIC FLOW/PARKING

Parents are asked to show extra caution in and around the school when dropping-off or picking up a child. Finding a parking space at Roper during the busy arrival and dismissal times can be difficult. Please follow these directives to alleviate traffic congestion at these busy times:

- Utilize the designated traffic loop for your child's grade level.
- Consider drop-off or pick-up points away from Roper in surrounding neighborhoods. The crosswalk to the east of Roper's main entrance will be supervised during busy arrival and dismissal times. If you choose to park in the neighborhood to walk your child to the school, please be courteous to our neighbors. Do not block driveways or mailboxes.
- If you choose to park in the school's parking lot, please do not block cars that are parked in parking stalls and leave your vehicle. Once you find a legal place to park, please walk your child to the building for their safety.
- Do not double-park in the loops. Do not encourage students to pass between cars when being picked up or dropped off. Always pull over to the curb before allowing your child out of the car.
- Do not park in a handicap parking space unless you have a registered parking permit or license plate. Always follow parking and traffic laws.

**Together we can make student drop-off and pick-up safe and efficient.**

## LATE ARRIVAL/EARLY DISMISSAL

Students who arrive any time after 8:10 AM must use Door #1 - east (Pre-K-3rd) or Door #16 – west (4th-5th). They should report directly to the east or west office to check in.

Students who leave before the end of the day will need to be signed out by a parent or guardian.

- Parents are asked to walk up to the building to pick up their child.
- Students will be called to the office upon parent arrival. Our priority is to provide the maximum classroom time with minimum disruptions. It is not possible to know exactly when parents will arrive to pick students up for appointments. Please plan accordingly.
- For safety reasons, please do not ask for your child to wait outside to be picked up early.
- We will only release children to adults that have been designated by parents or guardians. If someone other than a parent or guardian will pick up your child, please provide something in writing to the school office or call the office to provide the name of the person picking the child up.
- If someone other than a parent or guardian is picking a child up, even with written notice or a phone call from the parent or guardian, they may be asked for identification. Please ask them to be patient as this is only for the safety of the student.
- Please note that before 8:30 and after 2:30 are busy times in the office. It would be best to call between the hours of 8:30 and 2:30 to notify the office of an appointment.

If there is a special circumstance, such as a court order limiting access to a student by a parent or guardian, the office must be informed and provided with a copy of the order to maintain on file at the school.

## ABSENCES

In the event of a student absence, please call our school office at 402-436-1170. This not only helps us know who will be part of our learning community for the day, but also serves as an extra safety precaution for you and your child. A parent will be called if a student is counted absent by the classroom teacher and an absence has not been called in by a parent or guardian.

# December 2022



SUNDAY	MONDAY	TUESDAY	WEDNESDAY	THURSDAY	FRIDAY	SATURDAY
				1 Band Concert 6:00	2	3
4	5	6 Strings Concert 6:00	7	8	9	10
11	12 PLC Day, Early Dismissal	13 1:33 release	14	15	16	17
18	19	20	21	22 2nd Qtr Ends	23	24
25	26	27	28	29	30 Schools are Closed Winter Break	31
Schools are Closed - Winter Break						
L I N C O L N	P U B L I C	S C H O O L S	•	L I N C O L N,	N E B R A S K A	

\*ALL SCHEDULED EVENTS ARE TENTATIVE AND SUBJECT TO CHANGE.



## Attendance and School Schedule

It is important to a student's success in school that the habit of regular and punctual attendance be formed. Please do not send your child to school if he/she is ill. The health of our children is important. We also understand that family emergencies may occur and families may need to be out of town.

Please remember to contact the office when your child is not going to be at school i.e. vacation plans, illness, appointments. This information is for attendance purposes. **Even if you have informed the teacher you will still need to contact the office.**

### PHONE NUMBER: 402-436-1170

An answering machine is provided for your 24-hour convenience. If a student cannot be accounted for, a phone call from office staff to the parent/guardian will occur.

**Please Note:** Persons listed as emergency contacts will be called to verify a student's absence if a parent/guardian cannot be reached. Truancies will be subject to disciplinary action at the discretion of the principal.

## The LPS attendance policy requires that schools notify parents of their child's absences at various intervals

- A letter will be sent home if a student has missed 5 school days.
- A letter will be sent home when a student has missed 10 or more days of school.
- If a student misses more than 15 days of school, a Stage 3 letter will be sent home.

**Based on School Board Policy (Reg.5140.1),** the school may report to the county attorney when a collaborative plan involving the school, guardian, and student to reduce barriers to improve regular attendance has not been successful, and the student has accumulated more than twenty (20) absences per year. Absence codes that make up the excessive absences include:

- IL - Illness
- PA - Parent Acknowledged
- TR - Truant

## Fire and Tornado Drills

The school has a plan to provide for the safety of each student in the event of a fire or tornado. Drills are held periodically during the year to insure speed and efficiency in getting the students to the assigned places of safety.

## Security Procedures

**Secure** is implemented when there is a threat or hazard outside of the building.

**Lockdown** is called when there is a threat or hazard inside the school building.

**Hold** is used when we need to keep the hallways clear.

**Evacuate** is an action we use for fire drills. It could be used for other situations that may warrant an evacuation.

**Shelter** is used in response to severe weather. It may also be used for other environmental incidents.

# January 2023



SUNDAY	MONDAY	TUESDAY	WEDNESDAY	THURSDAY	FRIDAY	SATURDAY
1	2	3	3rd Qtr Begins 4	5	6	7
8	9	10	11	12	13	14
15	16	17	18	19	20	21
22	23	24	25	26	27	28
29	30	31				

Schools are Closed - Winter Break

Parent/Teacher  
Conferences  
3:00 - 7:00

Parent/Teacher  
Conferences  
3:00 - 7:00

Schools are Closed

PLC Day,  
Early Dismissal

1:33 release

L I N C O L N   P U B L I C   S C H O O L S   •   L I N C O L N ,   N E B R A S K A

# Bullying

If you feel your child is being bullied by peers, please contact your child's teacher or the building principal, Lynn Fuller. All reported incidences of bullying/unsafe behavior will follow the protocol outlined in Lincoln Public Schools Board Policy 5482: Anti-Bullying Policy.

Bullying is unwanted, aggressive behavior among school aged children that involves a real or perceived power imbalance. The behavior is repeated, or has the potential to be repeated, over time.

In order to be considered bullying, the behavior must include:

- Imbalance of Power: Kids who bully use their power—such as physical strength, access to embarrassing information, or popularity—to control or harm others. Power imbalances can change over time and in different situations, even if they involve the same people.
- Repetition: Bullying behaviors happen more than once or have the potential to happen more than once.
- Hurtful aggressive physical and/or verbal behavior.

Bullying includes actions such as making threats, spreading rumors, attacking someone physically or verbally, and excluding someone from a group on purpose.

As an added prevention piece, please discuss with your child adults in the building who they can talk to if they feel they are being bullied or are in an unsafe situation. These people may include, but are not limited to, their teacher, an administrator, school counselor, school psychologist, school social worker or any other adult in the building that they have built a positive relationship with.

Students are taught about what bullying looks like and sounds like, along with how to advocate for themselves through the District's Second Step program.



## Communication Methods

### Weekly Communication Folders

Typically, school news will be sent home electronically on Thursdays. Some items will be sent home via paper copies in the Thursday Folder. Please return the folder the next day including any notes to your child's teacher. General information will be sent with the oldest child in the family Attending Roper Elementary School.

### Community News

"Community News" is a newspaper distributed by Lincoln Public Schools, free to all elementary students the first week of every month from September through May. "Community News" replaces most informational flyers and can be used as a guide to community activities for students. The monthly school lunch menu is included in each issue of "Community News."

### School Website

Information is regularly updated on our website:  
<http://roper.lps.org>

### ParentVue

Parents may access communications, attendance information and more for their child through ParentVue. A "button" linking you to ParentVue can be found on our school website.

### School Messenger

This district-wide communication system sends school and district emails, texts, and phone calls to families with important information. Please be sure the school has your updated phone number and email address.

### Facebook

Check out school happenings on our Facebook Page! "Like" us at Roper Elementary School



# February 2023



SUNDAY	MONDAY	TUESDAY	WEDNESDAY	THURSDAY	FRIDAY	SATURDAY
			1	2	3	4
5	6	7	8	9	10	11
12	13	14	15	16	17 No School for Elementary Students	18
19	20 Schools are Closed	21	22	23	24	25
26	27	28 PLC Day, Early Dismissal  1:33 release				

L I N C O L N   P U B L I C   S C H O O L S   •   L I N C O L N ,   N E B R A S K A

**\*ALL SCHEDULED EVENTS ARE TENTATIVE AND SUBJECT TO CHANGE.**

## Safety Practices To and From School

In order to provide safety for walkers and riders, the following rules need to be followed. Parents are encouraged to plan with their children the shortest and safest route to school.

- Students should cross streets using the proper crosswalks as indicated by double white lines on the pavement.
- Parents should instruct their children to cross at corners or areas where school crossing signs are erected.
- Parents may park on the north side of the crosswalk or south of the drop-off zone in the Coddington traffic loop to walk students into the building.
- The parking lot is not a place for students to walk.

## Language

Students at Roper Elementary are expected to show respect to one another. Disciplinary action will be taken if a student uses inappropriate language at school.

## Trips or Excursions

All students will be transported by bus or walk if a field trip is in the surrounding neighborhood. A field trip parent/guardian approval form is located on the back of the census form. Each student will receive a census form in the LPS Important Information Packet before school starts. This form will need to be signed and returned the first day of school.

## ParentVue

ParentVue is a secure, private website through Lincoln Public Schools that allows access to your child's real-time information. ParentVue allows you to track attendance, see class websites, view report cards and access Special Education documents. Please call to set up your ParentVue access today.

## Optional 4th and 5th Grade Instrumental Music

Students who enroll will receive a 30 minute lesson on their instrument once a week during school hours. There will also be a rehearsal after school from 3:00 to 3:50 once a week. Attendance at lessons, rehearsals and concerts is required. The school provides books and music, however the instruments are not provided.

### Parking or Waiting

Please **do not** force children into an unsafe situation.



### Student Use of Telephone

Students are discouraged from bringing cell phones to school.

Cell phones seen or heard can be considered nuisance items and confiscated.

Students may use the telephone in either office in case of an emergency or to communicate important information as determined by the office staff or the principal. Students will not be allowed to use the phone to arrange afterschool play dates or to change afterschool plans without permission to do so.



### Telephone Messages

Telephone messages for your child will be relayed to your child only if an emergency exists. Classroom instruction is a priority. Parents needing to speak with their child's teacher may leave a message.

# March 2023



SUNDAY	MONDAY	TUESDAY	WEDNESDAY	THURSDAY	FRIDAY	SATURDAY
			1	2	3	4
5	6	7	8	9	3rd Qtr Ends 10	11
12	13	14	15	16	17	18
Schools are Closed						
19	4th Qtr Begins 20	21	22	23	24	25
26	27	PLC Day, Early Dismissal	28	29	30	31
		1:33 release				

L I N C O L N   P U B L I C   S C H O O L S   •   L I N C O L N ,   N E B R A S K A

## Items from Home to School

Please leave play items and items that may distract from learning at home. Only school supplies, forms to be returned to school, and schoolwork should be brought to school.

## ELL (English Language Learners)

ELL services provide assistance to students with limited English skills to function in the regular English-speaking classroom, to develop proficiency in reading, writing, speaking, and listening in English, and to develop knowledge about the customs and culture of the school, community, and nation.

## Textbook and Material Fines

It is the responsibility of each student to give proper care to instructional equipment, materials and supplies. Where carelessness leads to destruction or loss of equipment or materials beyond normal use, the student and parent should make appropriate payments.

## Releasing Students

For the safety of students, parents/guardians must come to the Security Entrance Monitor's desk when picking up their child before the regular dismissal time. Office staff will contact the classroom teacher and the student will be sent to the Security Entrance Monitor's desk after parents/guardians have arrived. If someone other than a parent or guardian will pick up your child, please call the office to provide the name of the person picking up your child. If this office does not receive a phone call, we will need to reach out to the parent or guardian before releasing the student.

## Recess Temperature Guidance

<10\* temperature or wind chill = Inside Recess  
Rain/Snow = Inside Recess

## LPS Parent Center

Welcome to the Lincoln Public Schools Parent Center. Check it out!

<http://www.lps.org/parents/>

This selection of information is designed to meet the needs of LPS families, providing current information about services, resources, data and news of interest to parents.

## Communicating Student Progress

Lincoln Board of Education states (Policy 6570) that "student progress will be reported formally to parents/guardians at least four times each year." Information about elementary student progress is reported in four areas.

1. Progress through district curriculum objectives
2. Performance in assigned curriculum level
3. Effort
4. Use of effective learning or study skills

Parent-Teacher conferences are scheduled twice a year. Please consult the Roper School Calendar for Parent-Teacher conference dates. Parents with immediate questions about their child's academic progress are encouraged to contact the teacher at any time

# April 2023



SUNDAY	MONDAY	TUESDAY	WEDNESDAY	THURSDAY	FRIDAY	SATURDAY
						1
2	3	4	5	6	7	8
9	10	11	12	13	Schools are Closed	15
	Schools are Closed					
16	17	18	19	20	21	22
23	24	25	26	27	28	29
30		PLC Day, Early Dismissal		No School for Elementary Students	Schools are Closed	
		1:33 release				

L I N C O L N   P U B L I C   S C H O O L S   •   L I N C O L N ,   N E B R A S K A

**\*ALL SCHEDULED EVENTS ARE TENTATIVE AND SUBJECT TO CHANGE.**



## Important Information Needed

For the safety of your child, it is necessary to give the school the name of a person to contact in case you cannot be reached. Please note: Persons listed as emergency contacts will be called to verify a student's absence if a parent/guardian cannot be reached.

It is very important that parents/guardian notify the school of any change in address and/or telephone number. The office must have a current telephone number on file in case we need to contact you for any emergency that could arise.

## Guidelines for the Dismissal of Students with Health Concerns

- The student with a temperature of 100 degrees or more
- The student with an undiagnosed rash. (Exception: If the student is taken to a physician, he/she may be readmitted with the doctor's written permission stating the rash is not contagious.)
- Other conditions, which may warrant a student being sent home, include: inflamed red eyes and/or drainage, vomiting and/or diarrhea, frequent persistent coughs, earache and/or drainage from the ear, questionable illness or injuries which may require evaluation by a physician, sores that appear infected or are draining, and any other possible communicable condition.

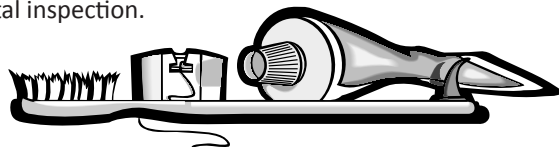
**No Student will be sent home until a parent or emergency contact has been notified.**

## Medical and Dental Appointments on School Time

Students are granted approved absences from school in order to keep medical and dental appointments during school hours. However, with Roper's early dismissal we encourage these appointments be made after school hours.

## Dental Inspections

Dentists recommended by the Lincoln District Dental Society and approved by the board of education perform dental inspections in the school. Students presenting a dental report form signed by their own dentist will be excused from the annual dental inspection.



## Before & After School Child Care at Roper Elementary School

Currently, Willard Community Center has a year-round licensed preschool, as well as before and after school programs for elementary school children.

This state licensed child care program is available from 6:30 a.m. until the beginning of the school day and resumes again right after school until 6:00 p.m.

The Roper school site offers a snack after school and a wide variety of activities, ranging from daily scheduled events to large group games to homework time.

Non-School day care is available at the Willard Community Center.

Contact Information below:

### **Willard Community Center**

Phone: (402) 475-0805





1245 S Folsom St.  
Lincoln, NE 68522

Monday-Friday

The office is open from 9 to 5.





May 2023	SUNDAY	MONDAY	TUESDAY	WEDNESDAY	THURSDAY	FRIDAY	SATURDAY
		1	2 Strings Concert 6:00	3	4 Band Concert 6:00	5	6
	7	8	9	10	11	12	13
	14	15	16	17	18	19	20
	21	22	23	24	25 Last Day of School  1:33 release	26	27
	28	29	30	31			
							
							
							
LINCOLN PUBLIC SCHOOLS • LINCOLN, NEBRASKA							

\*ALL SCHEDULED EVENTS ARE TENTATIVE AND SUBJECT TO CHANGE.



## Fund-A-Need

**Fund-A-Need** – is an award winning online program designed to help students and staff in Lincoln Public Schools. The program allows teachers and schools the avenue to post innovative educational ideas and classroom needs as a “proposal” for the community to view.

Proposals are approved by principals, submitted to the Foundation, and posted online. Donors may choose from the online list and make a tax-deductible donation to fund these classroom needs. Individuals who support a proposal will receive information about the activity from the teacher and students touched by the gift and a receipt from the Foundation as a record for the IRS.

Log on to  
[www.foundationforlps.org](http://www.foundationforlps.org)

or call  
**(402) 436-1612.**

## 2022–2023 Lunch Schedule

<i>Grade</i>	<i>Lunch/Recess</i>
Kindergarten	11:35 - 12:15
1st Grade	10:50 - 11:30
2nd Grade	12:20 - 1:00
3rd Grade	12:20 - 12:40
4th Grade	11:35 - 12:15
5th Grade	10:50 - 11:30

Some students will have lunch first, then recess. Others will have recess first, then lunch. Lunch and recess times are 20 minutes each.

## Lunch Time Visitors

We ask for your patience as we continue to follow safe protocols for the lunchroom. Please also be patient at the entrance desk. Our Secured Entrance Monitors may not recognize you the first couple of times you come. Please be cooperative as they check you in and be mindful that we prefer to be overly cautious about letting visitors in the building. Student safety is always our first priority.

We do not have a lot of extra space available for visitors in the lunchroom. We will ask that you limit visitors to one family member at a time.

If possible, we will have you sit next to your child at their assigned table in the lunchroom.

If there is not enough room at your child’s regularly assigned table, we will try to find another table nearby so that you can sit together.

If you bring food from outside of the school, we may ask you to sit at separate table to insure the safety of children with food allergies.

When the weather warms up, we have moved the picnic tables to the back of the building and you would be welcome to enjoy a picnic lunch with your child outside.

# June 2023



SUNDAY	MONDAY	TUESDAY	WEDNESDAY	THURSDAY	FRIDAY	SATURDAY
				1	2	3
4	5	6	7	8	9	10
11	12	13	14	15	16	17
18	19	20	21	22	23	24
25	26	27	28	29	30	

L I N C O L N   P U B L I C   S C H O O L S   •   L I N C O L N ,   N E B R A S K A

**\*ALL SCHEDULED EVENTS ARE TENTATIVE AND SUBJECT TO CHANGE.**



### TRAFFIC FLOW/PARKING

Please follow these directives to alleviate traffic congestion at these busy times:

- Consider drop-off or pick-up points away from Roper in surrounding neighborhoods. Please be courteous to our neighbors. Do not block driveways or mailboxes. Students must use crosswalks.
- If you choose to park in the school's parking lot, please do not block cars that are parked in parking. Once you find a legal place to park, please walk your child to the building for their safety.
- Do not double-park in the loops.
- Do not encourage students to pass between cars when being picked up or dropped off.
- Always pull over to the curb before allowing your child out of the car.
- Do not park in a handicapped parking space unless you have a registered parking permit or license plate. This includes drop-off and pick-up. Do not use Handicap stalls unless you have a visible permit.
- Preference for handicapped spaces will be given to staff and students who need the spaces.

**PLEASE NOTE:** All procedures, guidelines and dates outlined in these documents are subject to change, based on recommendations and health directives put into place by the [Lincoln Lancaster County Health Department \(LLCHD\)](#) and the Nebraska Department of Education.

# July 2023



SUNDAY

MONDAY

TUESDAY

WEDNESDAY

THURSDAY

FRIDAY

SATURDAY

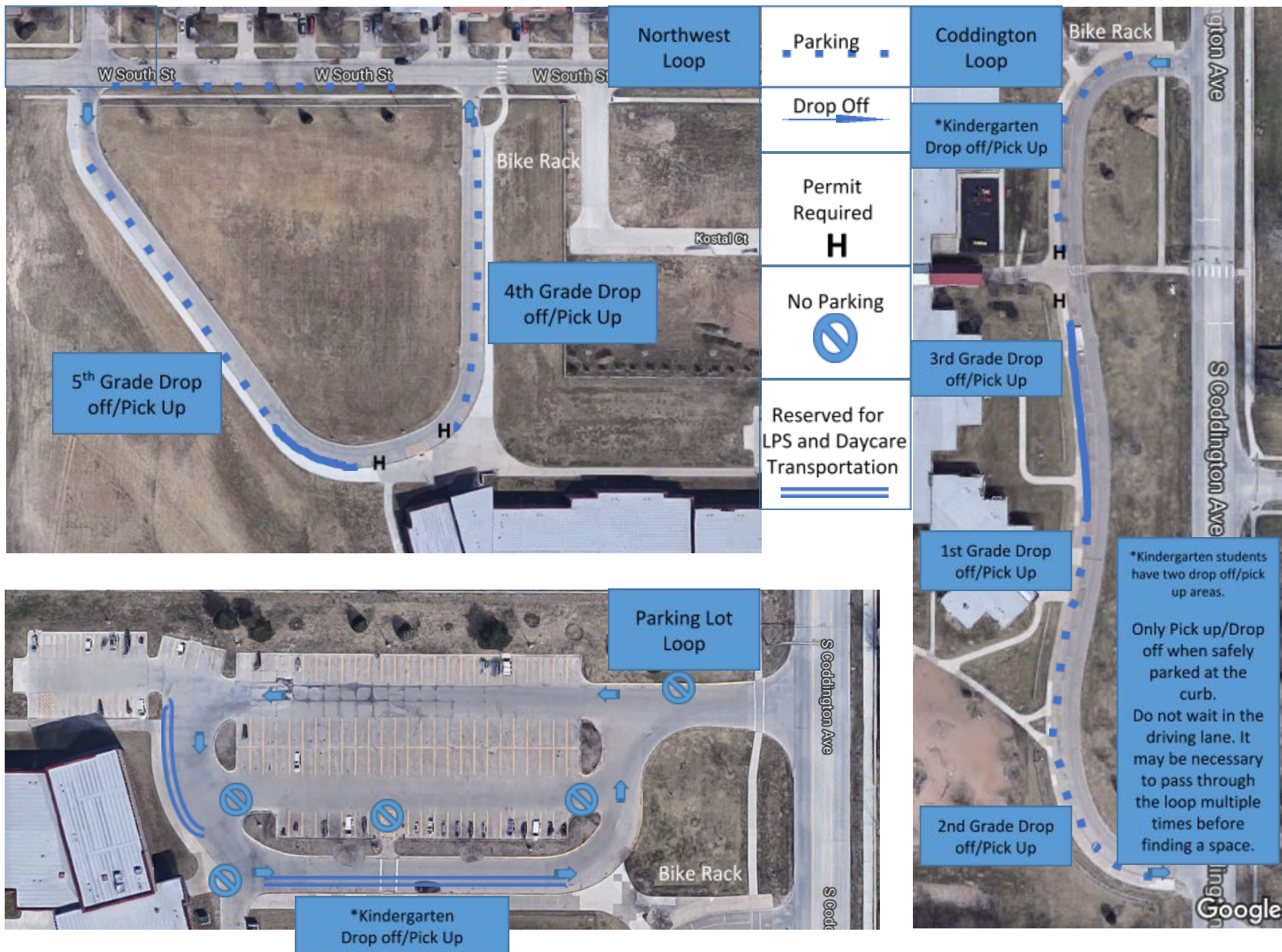
SUMMER  
ROCKS!

						1
2	3	4	5	6	7	8
9	10	11	12	13	14	15
16	17	18	19	20	21	22
23	24	25	26	27	28	29
30	31					

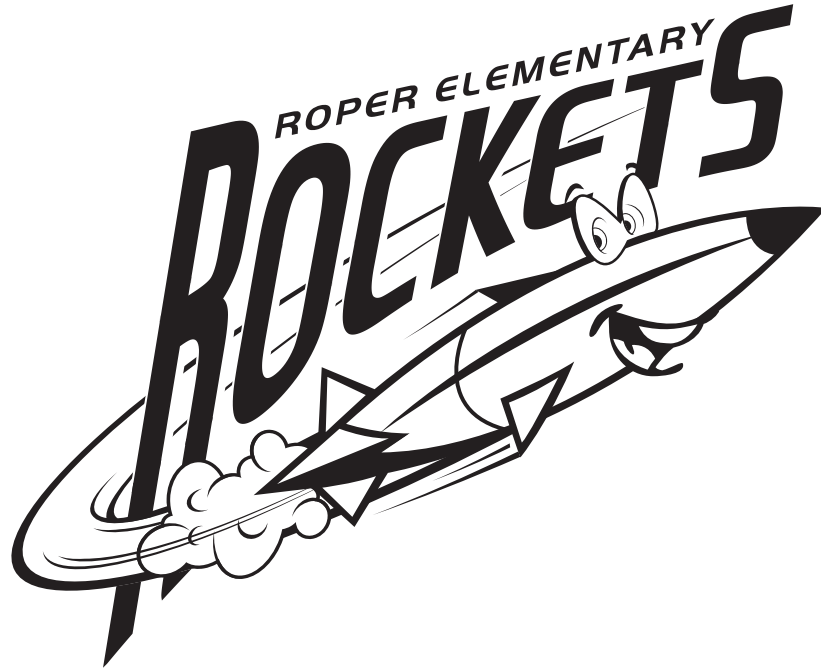
L I N C O L N   P U B L I C   S C H O O L S   •   L I N C O L N ,   N E B R A S K A

**\*ALL SCHEDULED EVENTS ARE TENTATIVE AND SUBJECT TO CHANGE.**











**Lincoln**  
PUBLIC SCHOOLS

**BOARD OF EDUCATION**

5905 O Street • Lincoln, NE 68510

*The Lincoln Public School District does not discriminate on the basis of race, color, national origin, religion, sex, marital status, sexual orientation, disability, age, pregnancy, childbirth or related medical condition, genetic information, citizenship status or economic status in its programs, activities and employment.*