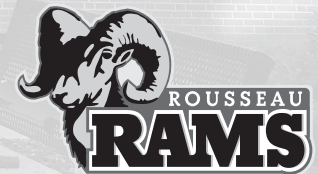


Rousseau Elementary School  
**2020-2021**  
**Parent/Student Handbook Calendar**



Rousseau  
Elementary is a  
smoke and tobacco  
free environment

**LEARN • THINK • LEAD**



## Table of Contents

Opening Letter from Principal .....	2
History of Maude Rousseau .....	4
School Rules and Behavior Expectations .....	6
Mission and Goals .....	6
Common Area Procedure Matrix.....	8
Telephone Calls.....	10
Arrival and Dismissal Procedures .....	10
After-School Guidelines .....	10
Traffic Patterns.....	12
Student Conduct.....	14
Lunch/Breakfast at School.....	16
Bullying.....	16
Parental Involvement/PTO .....	18
Important Info/Returning to School/Dental.....	18
Reggie.....	20
Methods of Communication .....	22
Custodial/Non-Custodial Parents .....	24

### PLEASE NOTE:

All procedures, guidelines and dates outlined in these documents are subject to change, based on recommendations and health directives put into place by the Lincoln Lancaster County Health Department (LLCHD) and the Nebraska Department of Education. Please keep in mind that, as with our Standard Response Protocols, every Lincoln Public Schools building or program which provides services may not always be in the same risk category.

## 2020-2021 Student Calendar



Lincoln Public Schools  
Lincoln, Nebraska



Revised 3/20

2020	2021
JULY	JANUARY
S M T W T F S	S M T W T F S
1 2 3 4	1 2
5 6 7 8 9 10 11	3 4 5 6 7 8 9
12 13 14 15 16 17 18	10 11 12 13 14 15 16
19 20 21 22 23 24 25	17 18 19 20 21 22 23
26 27 28 29 30 31	24 25 26 27 28 29 30
	31
AUGUST	FEBRUARY
S M T W T F S	S M T W T F S
1	1 2 3 4 5 6
2 3 4 5 6 7 8	7 8 9 10 11 12 13
9 10 11 12 13 14 15	14 15 16 17 18 19 20
16 17 18 19 20 21 22	21 22 23 24 25 26 27
23 24 25 26 27 28 29	28
30 31	
SEPTEMBER	MARCH
S M T W T F S	S M T W T F S
1 2 3 4 5	1 2 3 4 5 6
6 7 8 9 10 11 12	7 8 9 10 11 12 13
13 14 15 16 17 18 19	14 15 16 17 18 19 20
20 21 22 23 24 25 26	21 22 23 24 25 26 27
27 28 29 30	28 29 30 31
OCTOBER	APRIL
S M T W T F S	S M T W T F S
1 2 3	1 2 3
4 5 6 7 8 9 10	4 5 6 7 8 9 10
11 12 13 14 15 16 17	11 12 13 14 15 16 17
18 19 20 21 22 23 24	18 19 20 21 22 23 24
25 26 27 28 29 30 31	25 26 27 28 29 30
NOVEMBER	MAY
S M T W T F S	S M T W T F S
1 2 3 4 5 6 7	1 2 3 4 5 6 7 8
8 9 10 11 12 13 14	9 10 11 12 13 14 15
15 16 17 18 19 20 21	16 17 18 19 20 21 22
22 23 24 25 26 27 28	23 24 25 26 27 28 29
29 30	30 31
DECEMBER	JUNE
S M T W T F S	S M T W T F S
1 2 3 4 5	1 2 3 4 5
6 7 8 9 10 11 12	6 7 8 9 10 11 12
13 14 15 16 17 18 19	13 14 15 16 17 18 19
20 21 22 23 24 25 26	20 21 22 23 24 25 26
27 28 29 30 31	27 28 29 30

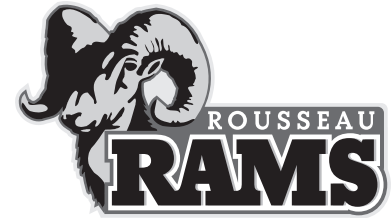
- First and last days of class for students
- PLC days-early dismissal \*Plan Days and PLC Days are subject to change
- Schools not in session
- Students in elementary schools NOT in attendance (Plan Days)  
\*Plan Days and PLC Days are subject to change
- Quarter start dates
- Quarter end dates

Thursday, May 20, 2021

Bryan Community Focus Program (at East)

Sunday, May 23, 2021

PBA: LHS/LSW/LNS | Devaney: LNE/LSE/East

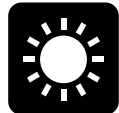


## Copyright and Fair Use Policy

It is the intent of the Lincoln Public Schools to adhere to the provisions of the U.S. Copyright Law (Title 17). All students and staff are prohibited from copying or transmitting materials not specifically allowed by fair use, copyright law, licenses or contractual agreements or permission.

The Lincoln Public Schools disapproves of unauthorized duplication in any form. Anyone who willfully disregards copyright policy is in violation and assumes all responsibility.

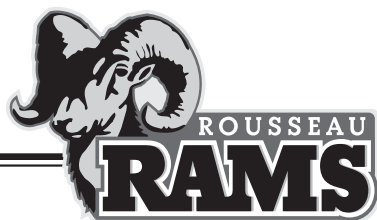
# August 2020



SUNDAY	MONDAY	TUESDAY	WEDNESDAY	THURSDAY	FRIDAY	SATURDAY
						1
2	3	4	5	6	7	8
9	10	11	12 First Day of School Early Dismissal-2:18 PM	13 Early Dismissal-2:18 PM	14 Early Dismissal-2:18 PM	15
16	17 First Day of Preschool PTO Meeting 6:30 PM**See Below	18	19	20 PTO Fundraiser Begins**See Below	21	22
23	24	25 PLC Day Dismiss 80 minutes early @ 2:18 PM No Preschool	26	27	28 Ram Report Newsletter	29
30	31					

\*ALL SCHEDULED EVENTS ARE TENTATIVE AND SUBJECT TO CHANGE DUE TO HEALTH DIRECTIVES PUT INTO PLACE TO PREVENT FURTHER SPREAD OF COVID-19

**LEARN • THINK • LEAD**



# ROUSSEAU ELEMENTARY SCHOOL

Lincoln Public Schools • 3701 South 33rd Street • Lincoln, NE 68506 • Phone (402) 436-1165

Dear Student and Families,

Welcome to Rousseau Elementary School. This handbook has been prepared for all students and parents/guardians in hopes that it will be helpful in answering questions you might have about the policies and practices of our school. Please carefully review the contents with your child.

The Important Information Booklet provided by Lincoln Public Schools also gives critical parent/student information. Note that dates for school events are subject to change. If you have questions regarding these publications, please do not hesitate to call the school office at 402-436-1165.

Our Open House will occur on August 10th from 5:30-6:30 p.m. This is a great opportunity to meet your child's teacher, find classrooms, visit with the Health Office staff and hand in any additional paperwork.

On behalf of the entire staff, we look forward to working together to make this a productive and successful year of learning.

Dr. Wendy Badje  
Principal

Mrs. Wendy Barry  
Assistant Principal

## Rousseau Elementary Business Partners

**Cornhusker Bank**  
34 & Old Cheney Road

**The Clark Enersen Partners**  
1010 Lincoln Mall Suite 200

**Runza**  
33rd & Highway 2

# September 2020



SUNDAY	MONDAY	TUESDAY	WEDNESDAY	THURSDAY	FRIDAY	SATURDAY
		1	2 Picture Day	3 PTO Fundraiser Ends**See Below	4	5
6	7 Schools are Closed	8	9	10	11	12
13	14	15	16	17	18	19
20	21 PTO Meeting 6:30 PM **See Below	22	23	24	25 Ram Report Newsletter	26
27	28	29 PLC Day Dismiss 80 minutes early @ 2:18 PM No Preschool	30			

L I N C O L N   P U B L I C   S C H O O L S   •   L I N C O L N ,   N E B R A S K A

**\*ALL SCHEDULED EVENTS ARE TENTATIVE AND SUBJECT TO CHANGE DUE TO HEALTH DIRECTIVES PUT INTO PLACE TO PREVENT FURTHER SPREAD OF COVID-19**

**LEARN • THINK • LEAD**

# History of Maude Rousseau Elementary School

Maude Rousseau Elementary School was named after C. Maude Rousseau who was a teacher and principal in Lincoln. She was born May 2, 1879 and died February 13, 1961. Miss Rousseau taught at Elliott from 1918-1922. She was an assistant principal and girls advisor at Whittier Junior High from 1922-1926, and was the first principal at Randolph School, where she served from 1926-1947.

Not much is known about Maude Rousseau. Research for Rousseau's 10th birthday celebration turned up the fact that Maude Rousseau liked to cook, so they baked brownies using Miss Rousseau's recipe for the 10th birthday party. The recipe was provided by Anna Zeman, Maude's friend, and a person for whom Zeman School was named.

On March 12, 1963, the board of education approved the name Maude Rousseau for the new school to be built at 33rd and Calvert. At that time, Calvert Street was not even paved all the way. Kingery Construction was low bidder, and thus got the job of building Rousseau School at a cost of under \$500,000. The Clark Enersen Partners designed the building.

In 1964, Maude Rousseau School's boundaries started at 27th and Woodsdale, running east of Woodsdale and Melrose to 40th Street, south of 40th Street to the school district's limits, west to 27th Street and north back to Woodsdale.



# October 2020



SUNDAY	MONDAY	TUESDAY	WEDNESDAY	THURSDAY	FRIDAY	SATURDAY
				1 Parent/Teacher Conferences 4-7 PM**See Below	2	3
4	5	6 Parent/Teacher Conferences 4-7 PM**See Below	7	8	9	10
11	12	13	14	15 No School for Elementary Students	16 Schools are Closed	17 Pumpkin Run
18 Red Ribbon Week PTO Meeting 6:30 PM**See Below	19 Red Ribbon Week	20 Red Ribbon Week	21 Red Ribbon Week Picture Retake Day	22 Red Ribbon Week	23 Red Ribbon Week	24
25	26 PLC Day Dismiss 80 minutes early @ 2:18 PM  No Preschool	27	28	29	30 Ram Report Newsletter	31

L I N C O L N   P U B L I C   S C H O O L S   •   L I N C O L N ,   N E B R A S K A

**\*ALL SCHEDULED EVENTS ARE TENTATIVE AND SUBJECT TO CHANGE DUE TO HEALTH DIRECTIVES PUT INTO PLACE TO PREVENT FURTHER SPREAD OF COVID-19**

**LEARN • THINK • LEAD**



## School Rules & Behavior Expectations

The Rousseau community including students, parents, administration, and staff will work together to create and maintain a safe, caring environment that promotes teaching and learning. Rousseau School has implemented a school wide multi-tiered systems of support (MTSS). MTSS is a school-wide system that includes proactive strategies for defining, teaching, and supporting appropriate student behaviors to create positive school learning environments. We know that when good behavior and good teaching come together, our students will excel in their learning. The expectations listed below will enhance the development of a positive learning environment.

- **Be Respectful** - We will treat others with respect and care.
- **Be Responsible** - We will display good citizenship and acknowledge responsibility for behavior.
- **Be Safe** - We will have the responsibility to practice self-discipline skills to ensure safety for all.

During the first week of school and throughout the school year, staff will focus on teaching students the behavior expectations for all areas of our school. Our goal is to “catch kids being learners”. When students know that their positive behavior is clearly defined, taught, recognized and reinforced, they are more likely to respond with positive behavior choices. The Behavior Expectation Matrix (page 8) describes in more detail the expectations we have for students.

We know that students can have challenges to consistently display appropriate behavior due to a variety of reasons. To further support our students, we help students learn to manage their own behavior so that they and their classmates can learn, perform and behave at grade level or above.

Students work on the following goals for life:

- I can be productive and follow directions, even if I am mad.
- I can be productive and follow directions, even if others are not okay.
- I can be productive and follow directions, even if I don't want to.

## Rousseau's Mission Statement

The mission of Rousseau Elementary:

Learn at High Levels.

Think Interdependently.

Lead with Character.

## Rousseau's Goals for Students

It is the goal of Rousseau that every student meet the following school improvement goals:

1. All students will improve math skills across grade levels.
2. All students will improve literacy skills across grade levels.

The Rousseau staff partners with parents and guardians to achieve these goals on a daily basis. The following are suggestions parents can use to get students prepared to learn:

- Get to know your child's teacher. As a parent you know your child best. Share what you know with the teacher: interests, favorite book, concerns you may have, etc.
- Make sure your child gets enough sleep. Tired children can't do their best work. Establish a routine for bedtime and adhere to it.
- Talk to the teacher about what is expected of your child in school. Every family should set aside homework time and model for children the process of learning.
- Limit TV and video game time. Studies show that children who do best in school watch the least amount of TV/video games. When you first turn off the TV/ video game, you will have to help your child find other things to do – read a book, take a walk, visit the library, play a game.
- Chores are an important part of a child's life. They provide children the foundation upon which responsibility and high self-esteem are built. Research shows that children who do chores without reminders or parent persuasion are very successful at their first job called SCHOOL.



# November 2020



SUNDAY	MONDAY	TUESDAY	WEDNESDAY	THURSDAY	FRIDAY	SATURDAY
1	2	3 Elks Hoop Shoot 4-6 PM**See Below  Schools are Closed	4	5	6	7
8	9 PTO Movie Ticket Sales Kickoff**See Below	10 Elks Hoop Shoot 4-6 PM**See Below	11	12	13 Fall Celebration**See Below	14
15	16 Rousseau Birthday Chorus Concert 7:00 PM**See Below	17	18	19	20 Ram Report Newsletter	21
22	23 Grand Adult Day K-2**See Below PTO Movie Ticket Sales Due PTO Meeting 6:30 PM**See Below	24 PLC Day Dismiss 80 minutes early @ 2:18 PM No Preschool Grand Adult Day Gr 3-5**See Below	25	26	27	28
29	30 No School for Elementary Students	Schools are Closed				

\*ALL SCHEDULED EVENTS ARE TENTATIVE AND SUBJECT TO CHANGE DUE TO HEALTH DIRECTIVES PUT INTO PLACE TO PREVENT FURTHER SPREAD OF COVID-19

**LEARN • THINK • LEAD**

# Rousseau Elementary School Common Area Procedures 2020-2021

Arrival	Playground	Hallway	Restroom	Lunchroom	Assembly	Reggie	Dismissal	Use of Technology	Digital Citizenship
<ul style="list-style-type: none"> <li>• Use sidewalks and crosswalks.</li> <li>• Enter through assigned doors.</li> <li>• Arrive on time (8:50 to 9:00am).</li> <li>• Breakfast served from 8:30 to 9:00am.</li> </ul>	<ul style="list-style-type: none"> <li>• Walk (no tag) on play structure.</li> <li>• What is on the ground stays on the ground.</li> <li>• Keep hands, feet, and objects to self.</li> <li>• Use equipment correctly.</li> </ul>	<ul style="list-style-type: none"> <li>• Walk single file.</li> <li>• Face forward.</li> <li>• Keep hands and feet to self.</li> <li>• Walk on the right.</li> <li>• Keep proper distance between you and others.</li> </ul>	<ul style="list-style-type: none"> <li>• Wash hands with soap and water.</li> <li>• Keep hands and feet to self.</li> <li>• Report concerns.</li> </ul>	<ul style="list-style-type: none"> <li>• Sit on pockets.</li> <li>• Eat own meal/food.</li> <li>• Walk directly to recess.</li> <li>• Finish chewing and swallowing before dismissed.</li> </ul>	<ul style="list-style-type: none"> <li>• Keep hands and feet to self.</li> <li>• Sit on pockets.</li> </ul>	<ul style="list-style-type: none"> <li>• Walk towards Reggie.</li> <li>• Don't Run.</li> <li>• Level 2 voices.</li> </ul>	<ul style="list-style-type: none"> <li>• Use sidewalks and crosswalks.</li> <li>• Exit assigned doors.</li> <li>• Walk bikes and carry skateboards.</li> </ul>	<ul style="list-style-type: none"> <li>• Handle with care/open lid carefully, push keys softly</li> <li>• Keep keys on computers</li> <li>• Be aware of and leave cords/plugs alone</li> <li>• Use two hands when carrying a computer device</li> <li>• Keep technology away from food/liquid</li> <li>• Walk</li> </ul>	<ul style="list-style-type: none"> <li>• Keep contact information private</li> <li>• Keep passwords private</li> <li>• Get permission to download</li> <li>• Get permission to visit a new site</li> </ul>
<ul style="list-style-type: none"> <li>• Walk quietly.</li> <li>• Maintain personal space.</li> <li>• Level 2 Voice</li> </ul>	<ul style="list-style-type: none"> <li>• Let everyone play.</li> <li>• Use good sportsmanship.</li> <li>• Follow the rules of the game.</li> <li>• Use kind words.</li> <li>• Listen to adults.</li> </ul>	<ul style="list-style-type: none"> <li>• Keep feet quiet.</li> <li>• Level 1 voice.</li> <li>• Close lockers quietly.</li> <li>• Hang up coats.</li> <li>• Listen to adults.</li> </ul>	<ul style="list-style-type: none"> <li>• Use level 1 voices.</li> <li>• Flush toilet.</li> <li>• Respect privacy and personal space.</li> <li>• Keep empty stalls unlocked.</li> </ul>	<ul style="list-style-type: none"> <li>• Square up to table.</li> <li>• Use good manners.</li> <li>• Save games for the playground.</li> <li>• Level 1 voice in serving area.</li> <li>• Level 3 voice at lunch table.</li> </ul>	<ul style="list-style-type: none"> <li>• Use audience manners.</li> <li>• Listen responsively and applaud appropriately.</li> <li>• Level 2 voice until program begins.</li> <li>• Level 1 voice during program.</li> </ul>	<ul style="list-style-type: none"> <li>• Only small groups of students around Reggie at one time.</li> <li>• Wave at Reggie in halls.</li> </ul>	<ul style="list-style-type: none"> <li>• Walk quietly.</li> <li>• Maintain personal space.</li> <li>• Listen to adults.</li> <li>• Level 2 voices.</li> </ul>	<ul style="list-style-type: none"> <li>• Use clean hands</li> <li>• Close out of all programs when leaving</li> <li>• Respect others' computer use</li> <li>• Wait your turn when taking computers off the cart</li> <li>• Work quietly, respect that others are working</li> </ul>	<ul style="list-style-type: none"> <li>• Only post what you would say in person</li> <li>• Respond to posts politely</li> <li>• Visit appropriate sites and apps</li> <li>• Ask before posting photos</li> </ul>
<ul style="list-style-type: none"> <li>• Keep hands, feet, and personal items to self.</li> <li>• Stand quietly in assigned lines.</li> </ul>	<ul style="list-style-type: none"> <li>• Run/walk your lap.</li> <li>• Line up when whistle blows.</li> <li>• Ask permission to leave the playground.</li> <li>• Enter the building ready to learn.</li> <li>• Put trash in garbage cans.</li> </ul>	<ul style="list-style-type: none"> <li>• Close doors to playground.</li> <li>• Walk directly to destination.</li> <li>• Keep our hallways clean.</li> </ul>	<ul style="list-style-type: none"> <li>• Sign out of classroom.</li> <li>• Return to class promptly.</li> <li>• Keep restrooms clean.</li> </ul>	<ul style="list-style-type: none"> <li>• Stack trays appropriately.</li> <li>• Get adult help for accidents or spills.</li> <li>• Raise hand for adult assistance.</li> <li>• Clean up your eating area.</li> </ul>	<ul style="list-style-type: none"> <li>• Listen to adults.</li> <li>• Remain seated until teacher dismisses.</li> </ul>	<ul style="list-style-type: none"> <li>• Ask to pet Reggie before petting him.</li> <li>• Pet Reggie gently.</li> </ul>	<ul style="list-style-type: none"> <li>• Wait calmly for adults or bus.</li> <li>• Keep hands, feet and objects to self.</li> </ul>	<ul style="list-style-type: none"> <li>• Take turns / use assigned computer</li> <li>• Use correct cord to plug computer</li> <li>• Listen to and follow adult directions</li> <li>• Return computers to correct location on cart</li> <li>• Be careful with devices</li> <li>• Report damage immediately</li> </ul>	<ul style="list-style-type: none"> <li>• Understand your digital footprint</li> <li>• Report issues to adults</li> <li>• Follow directions (no games while teacher is teaching)</li> <li>• Use technology with purpose</li> </ul>

# December 2020



SUNDAY	MONDAY	TUESDAY	WEDNESDAY	THURSDAY	FRIDAY	SATURDAY
		1	2	3 Band/Strings Concert 6:30 PM Pound Middle School**See Below	4	5
6	7	8	9	10	11	12
13	14	15 PLC Day Dismiss 80 minutes early @ 2:18 PM  No Preschool	16	17	18 Ram Report Newsletter	19
20	21	22	23	24	25	26
27	28	29	30	31		

Schools are Closed - Winter Break

Schools are Closed - Winter Break

\*ALL SCHEDULED EVENTS ARE TENTATIVE AND SUBJECT TO CHANGE DUE TO HEALTH DIRECTIVES PUT INTO PLACE TO PREVENT FURTHER SPREAD OF COVID-19

**LEARN • THINK • LEAD**

## Telephone Calls

The Rousseau telephone number is 402-436-1165. Calls to the office will be answered from 7:30 am until 4:30 pm. Students will not be called out of class for phone calls unless it is an emergency.

The school phone is for business purposes. Students may not use the phone except in an emergency or with a note from the teacher. Please speak to your child about making arrangements with you before school about staying after school, visits to friends, etc.

## Arrival And Dismissal Procedures

### Arrival

Rousseau Elementary School campus is closed until 8:45 am. Prior to that time, no supervision is available, and students are not to be on school grounds. KDG students will line up out front by the flags in the circle. **1st-5th grade will line up on the playground.** Students will not be permitted to walk through the building to the playground for lineup. The first bell rings at 8:55 am and students will walk from the playground with their teacher and enter the building through their designated doors. School begins at 9:00 am and students are expected to be in their classroom seats at the sound of the bell.

#### Arrival Doors

Preschool: Door 10  
Kindergarten: Door 1  
1st Grade: Door 9  
2nd Grade: Door 7  
3rd Grade: Door 9  
4th Grade: Door 3  
5th Grade: Door 2

#### Dismissal Doors

Door 10  
Door 1  
Door 13  
Door 7  
Door 9  
Door 3  
Door 2

### Dismissal

Students will be dismissed by teachers at 3:38 pm and will leave the building through their designated doors. All students must go directly home or to a school sanctioned after school activity. Students who are participating in Family Service will meet a Family Service staff member at a designated location to be escorted to the program area.

## After-School Guidelines

- School Campus (including the playground) is closed until 6:00 pm except for use by school childcare and clubs. Reservations for rooms/playground should be entered in the district Archibus system.
- If students are to be picked up at school and no one has arrived by 3:45 pm, school staff will attempt to contact parents.
- Afterschool plans need to be made in advance.



# January 2021



SUNDAY	MONDAY	TUESDAY	WEDNESDAY	THURSDAY	FRIDAY	SATURDAY
					1 Schools are Closed - Winter Break	2
3	4 Schools are Closed - Winter Break	5	6	7	8	9
10	11 PTO Meeting 6:30 PM**See Below	12	13	14	15	16
17	18	19	20	21	22	23
	24 Schools are Closed	25	26 PLC Day Dismiss 80 minutes early @ 2:18 PM No Preschool	27	28	29 Ram Report Newsletter
31						30

\*ALL SCHEDULED EVENTS ARE TENTATIVE AND SUBJECT TO CHANGE DUE TO HEALTH DIRECTIVES PUT INTO PLACE TO PREVENT FURTHER SPREAD OF COVID-19

**LEARN • THINK • LEAD**

# Traffic

Safety around Rousseau School is a primary concern. One important aspect of safety is traffic flow during critical drop-off and pick-up times. The success of our plan is dependent on adherence to the following procedures:

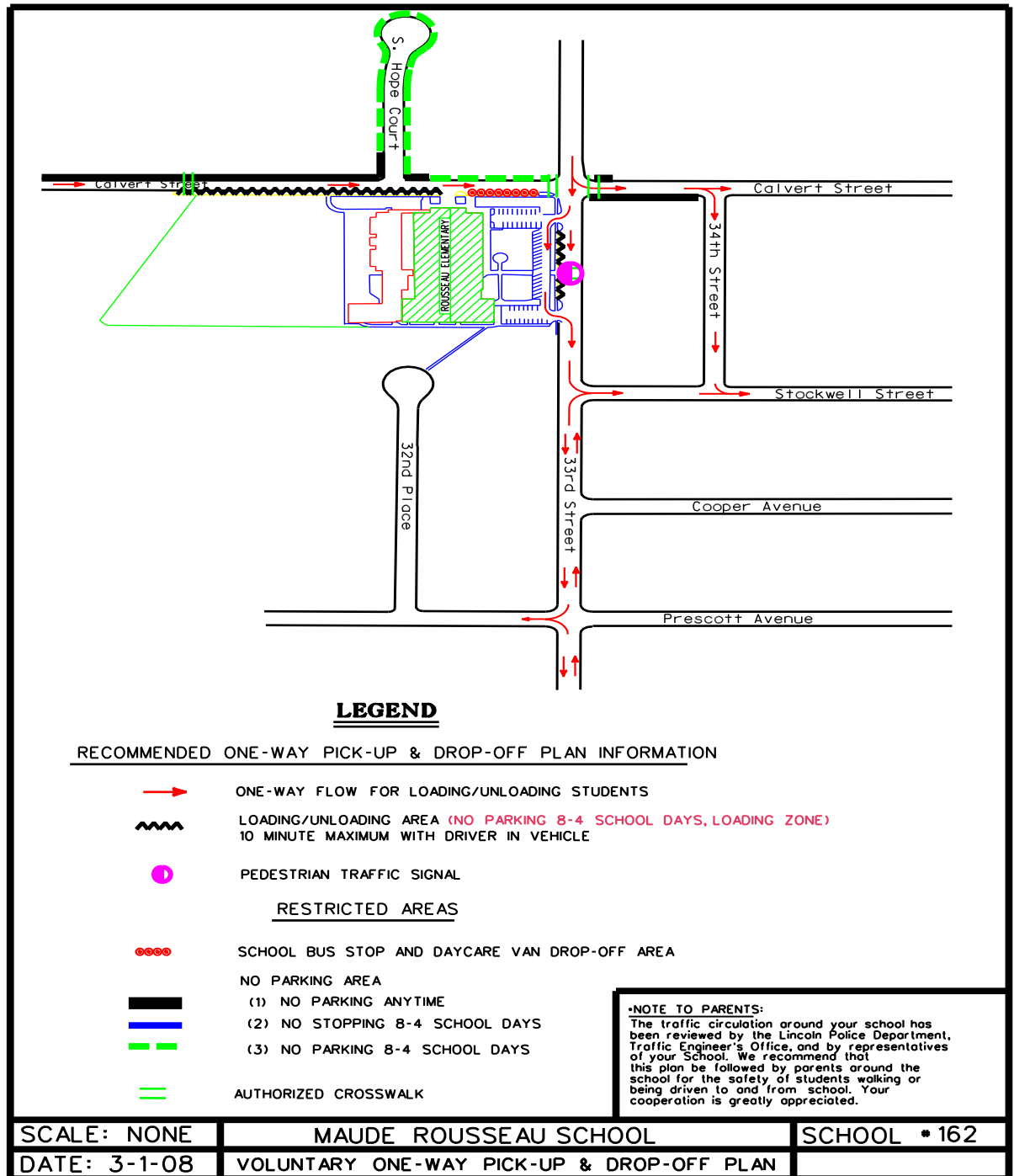
Children should **ONLY** enter and exit from **two cars in front of or two cars behind** the marked crosswalk in the drive through. Children should avoid walking between parked cars. If parents need to get out of cars, please pull over to the curb or parking space. Having students ready to exit the car immediately will keep traffic moving.

The curb cutout on Calvert Street is designated for LPS busses and daycare vans only. Parents are **NOT** to use this area. The curb cutout on 33rd Street is for dropping off and picking up students. Please **DO NOT** leave your car unattended.

Children should cross Calvert Street at the crosswalk along 33rd Street. Students crossing 33rd Street are asked to use the pedestrian light directly in front of the school. Students should not be encouraged to cross in the middle of the street to load an awaiting car.

There will be a voluntary right turn only at the intersection of 33rd and Calvert from 3:38-4:00 PM for cars going east on Calvert.

For vehicles traveling north on 33rd Street, there will be a voluntary no left turn in to the Rousseau School drive through from 3:35-4:00 PM. Vehicles will need to be traveling south on 33rd Street to enter the drive-through.



# February 2021



SUNDAY	MONDAY	TUESDAY	WEDNESDAY	THURSDAY	FRIDAY	SATURDAY
	1	2	3	4	5 Books and Beyond Begins	6
7	8 PTO Meeting 6:30 PM**See Below	9	10	11	12	13
14	15 No School for Elementary Students	16	17 PTO Cards for A Cause Fundraiser Begins**See Below	18 Parent/Teacher Conferences 4-7 PM**See Below  PTO Book Fair 4-7 PM**See Below	19	20
21	22 PTO Book Fair 4-7 PM**See Below	23 PLC Day Dismiss 80 minutes early @ 2:18 PM No Preschool Parent/Teacher Conferences 4-7 PM**See Below PTO Book Fair 4-7 PM**See Below	24	25	26 Ram Report Newsletter  Books and Beyond Ends	27
28						

L I N C O L N   P U B L I C   S C H O O L S   •   L I N C O L N ,   N E B R A S K A

**\*ALL SCHEDULED EVENTS ARE TENTATIVE AND SUBJECT TO CHANGE DUE TO HEALTH DIRECTIVES PUT INTO PLACE TO PREVENT FURTHER SPREAD OF COVID-19**

**LEARN • THINK • LEAD**

# Student Conduct

## Behavioral Expectations

Any conduct which causes or which creates reasonable likelihood that it will cause disruption or interference with any school function, activity, or purpose or such conduct that interferes with the health, safety, and well being or the rights of other students is prohibited by the Board of Education.

It is with this belief that Rousseau Elementary has chosen to establish the following school rules:

1. **Be Safe**
2. **Be Respectful**
3. **Be Responsible**

Our focus is to define, teach, practice and reinforce appropriate learning behaviors. We work to strengthen the prevention process so that students can successfully demonstrate behaviors that will help them learn. We are committed to helping children learn that they can problem solve, they can act in a way that will not make a problem for themselves or others, and that staff at Rousseau School will hold them accountable for their behaviors. When children are hurtful or disruptive at Rousseau, teachers will ask them to immediately stop and change the behavior.

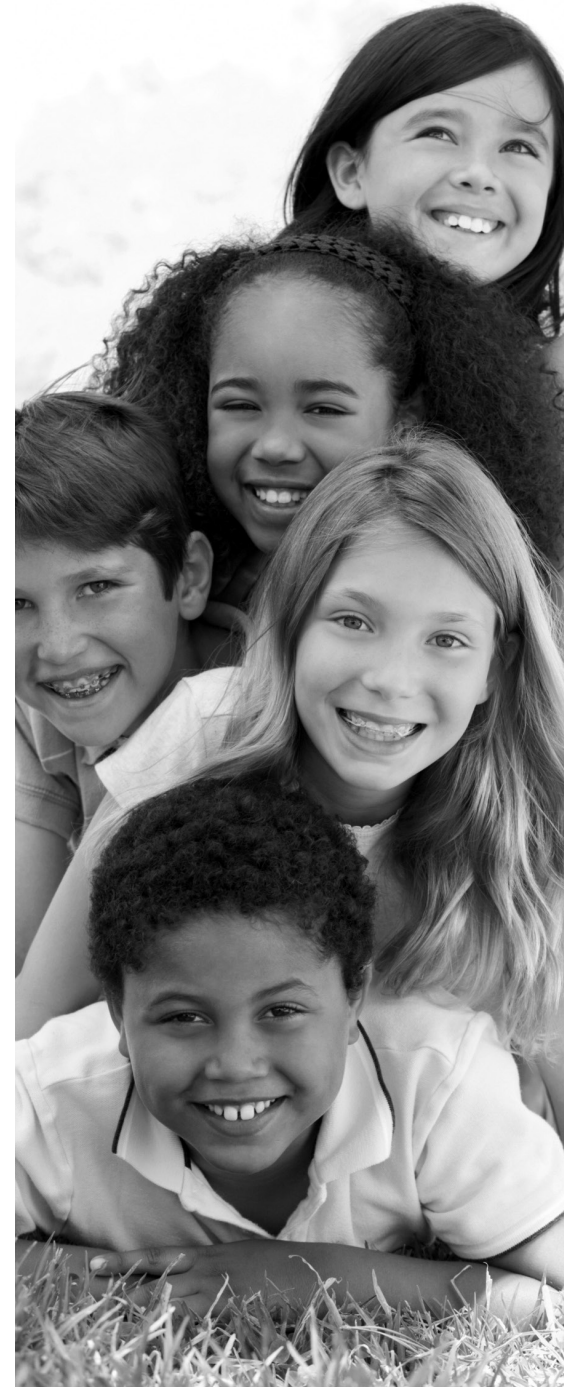
Children will be referred immediately to the office for:

1. Physical violence directed to an adult. Suspension, from class or school may result. Parent/teacher/administrator conference may be required.
2. Physical violence directed to a student. Suspension, from class or school may result. Parent/teacher/administrator conference may be required.
3. Profanity directed to an adult. Suspension, from class or school may result. Parent/teacher/administrator conference may be required.
4. Profanity directed to a student. Suspension from class or school may result. Parent/teacher/administrator conference may be required.
5. Bringing items that are considered to be weapons such as knives, bullets, fireworks, etc.

While no one menu of consequences parallels children's misbehavior, staff will continue to implement logical learning opportunities. Contact your child's teacher or an administrator to learn more about this behavioral approach.

## Positive Reinforcement

The Rousseau Staff give students positive reinforcements in a variety of ways. The following classroom awards are given weekly to the classrooms who are being responsible and displaying positive behaviors: Do The Right Thing Award, The Einstein Award, Gold Trash Can Award, Positive Playground Award. Individual students may earn Reggie Bucks for displaying positive behaviors that are taught in our Second Steps Curriculum.



# March 2021



SUNDAY	MONDAY	TUESDAY	WEDNESDAY	THURSDAY	FRIDAY	SATURDAY
	1	2	3 PTO Cards for A Cause Fundraiser Ends	4	5	6
7	8	9	10	11	12	13
14	15 PTO Meeting 6:30 PM**See Below	16	17	18	19	20
21	22	23	24	25	26 Ram Report Newsletter	27
28	29	30 PLC Day Dismiss 80 minutes early @ 2:18 PM No Preschool	31			

Schools are Closed

\*ALL SCHEDULED EVENTS ARE TENTATIVE AND SUBJECT TO CHANGE DUE TO HEALTH DIRECTIVES PUT INTO PLACE TO PREVENT FURTHER SPREAD OF COVID-19

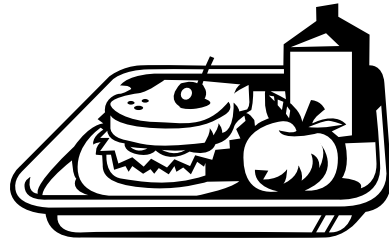
**LEARN • THINK • LEAD**

## Lunch/Breakfast at School

Lunch may be purchased at school. Money can be deposited on-line (LPS.org Buy Student Meals) or sending cash or checks. One check per family will be accepted. Please write all of your student's names and amount you wish to deposit in each account and turn in to the school office. Students will access their meal account by either using finger-scanning or a personalized barcode card. You may place any amount into your child's account. Each student will need to have their own account.

### Lunch Schedule

11:00-11:44	Kindergarten
11:23-12:07	1st Grade
11:47-12:31	2nd Grade
1:00-1:44	3rd Grade
12:35-1:19	4th Grade
12:11-12:55	5th Grade



### Visitors Eating At School

Many children and their parents enjoy having lunch together in the lunchroom. Classrooms go to lunch a few minutes after each other. Parents may contact the classroom teacher for specific lunch times. Parents may join their students at recess on outdoor recess days. However, parents will not be allowed to go to the classrooms on indoor recess days. **Due to Covid-19, no visitors are allowed in the school until further notice.**

### Cost of Lunch

Meal prices for the 2019-20 school year are as follows:

Student-paid \$2.45 | Student-reduced \$.40 | Adult/non-student TBA

If your child received free/reduced lunch and breakfast last year, your application is valid for the first 30 days of school this year. Please complete a new application found online @lps.org. Eligibility for the free/reduced lunch program is determined by federal guidelines.

### Breakfast

Students may participate in the breakfast program. Students arriving for breakfast should not arrive prior to 8:30 am as there is no supervision. Students will enter through door 13 and go to the cafeteria. Students will be dismissed at 8:50 am to line up at their arrival doors.

### Additional Food Items in the Cafeteria

Students are always welcome to bring cold lunch from home. As with hot lunch, food items may not be traded or shared. **If a student is having cold lunch, they may bring a drink item. (We ask that no soda be brought to school).** Students may always bring \$.50 to purchase milk/juice from the cafeteria.

## Bullying

If you feel that your child is being bullied by peers, please contact your child's teacher or the building principal, Wendy Badje. All reported incidences of bullying/unsafe behavior will follow the protocol outlined in Lincoln Public Schools Board Policy 5482: Anti-Bullying Policy.

Bullying is unwanted, aggressive behavior among school aged children that involves a real or perceived power imbalance. The behavior is repeated, or has the potential to be repeated, over time.

In order to be considered bullying, the behavior must include:

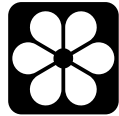
- Imbalance of Power: Kids who bully use their power—such as physical strength, access to embarrassing information, or popularity—to control or harm others. Power imbalances can change over time and in different situations, even if they involve the same people.
- Repetition: Bullying behaviors happen more than once or have the potential to happen more than once.
- Hurtful aggressive physical and/or verbal behavior.

Bullying includes actions such as making threats, spreading rumors, attacking someone physically or verbally, and excluding someone from a group on purpose.

As an added prevention piece, please discuss with your child adults in the building who they can talk to if they feel that they are being bullied or are in an unsafe situation. These people may include, but are not limited to, their teacher, the administrator, school counselor, school psychologist, school social worker or any other adult in the building that they have built a positive relationship with.

Students are taught about what bullying looks like and sounds like, along with how to advocate for themselves through the District's Second Step program.

# April 2021



SUNDAY	MONDAY	TUESDAY	WEDNESDAY	THURSDAY	FRIDAY	SATURDAY
				1	2 Schools are Closed	3
4	5 No School for Elementary Students	6 Staff Meeting 8:10 AM	7	8	9 SIP Meeting 8:10 AM	10
11	12	13	14 Gifted Meeting 8:10 AM	15	16 PTO Family Fun Night 5:30-7:30 PM**See Below	17
18	19 PTO Meeting 6:30 PM** See Below	20 Staff Meeting 3:45 PM	21	22 Band/Strings Concert 6:30 PM - Pound Middle School**See Below	23 SE Meeting 8:10 AM	24
25	26 Chorus Concert 7:00 PM** See Below	27 PLC Day Dismiss 80 minutes early @ 2:18 PM No Preschool	28	29	30 Ram Report Newsletter Social Comm. Meeting 8:10 AM	

\*ALL SCHEDULED EVENTS ARE TENTATIVE AND SUBJECT TO CHANGE DUE TO HEALTH DIRECTIVES PUT INTO PLACE TO PREVENT FURTHER SPREAD OF COVID-19

**LEARN • THINK • LEAD**

# Parental Involvement

## Rousseau Parent Teacher Organization

The Rousseau School Parent Teacher Organization (PTO) is a vital part of Rousseau School's success with children. As an organization, they represent parents/guardians and organize events and projects that serve children and families. Scheduled PTO meetings are listed on the calendar. All families are encouraged to attend PTO meetings and activities. PTO Meetings are generally held the 3rd Monday of the month at 6:30 p.m. in the Rousseau Media Center. Meeting dates are listed on the Rousseau website calendar and in this handbook. Every parent is a member of PTO and there are no dues! Facebook: Check out PTO happenings on the Rousseau website/PTO or our Facebook page! Search Rousseau Elementary PTO on facebook and "Like" our page. PTO Meetings will be virtual until further notice.

## Visitors

Parents/guardians and community members are encouraged to visit school. Children not enrolled at Rousseau may not visit unless accompanied by an adult. It is recommended that visitors limit their visit to 30 minutes. When visitors come to school, we ask that they come to the office, check in with the secured-entrance monitor, and wear a visitor's badge provided for you. Wearing this visitor's badge will assure all staff that approval has been given by the office to visit. **Due to Covid-19, no visitors are allowed in the school until further notice.**

## Important Information Needed

**It is very important that parents/guardians notify the school of any change in address and/or telephone number. The office must have a current telephone number on file in case we must contact you in the event of an emergency.** Persons listed as emergency contacts will be called to verify a student's absence if a parent/guardian cannot be reached.

## Returning to School Following Illness

Students should have a note from parent/guardian explaining the cause of the absence if the parent has not been in contact with the school during the absence. In some cases the school may request a statement from a physician. If the absence is of three days or more due to a communicable disease, the student should be checked by the nurse, health technician, principal or principal's designee.

## Dental Inspections

Dental inspections are performed in the school by dentists recommended by the Lincoln District Dental Society and approved by the Board of Education. Students presenting a dental report form signed by their own dentist will be excused from annual dental inspection which starts approximately October 1.

# May 2021



SUNDAY	MONDAY	TUESDAY	WEDNESDAY	THURSDAY	FRIDAY	SATURDAY
						1 Mayor's Run**See Below
2	3 Staff Appreciation Week Bike Rodeo 4-6 PM **See Below	4 Staff Appreciation Week Bike Rodeo Rain Date 4-6 PM**See Below	5 Staff Appreciation Week	6 Staff Appreciation Week	7 Staff Appreciation Week MTSS-B Meeting 8:10 AM	8
9	10	11 Staff Meeting 8:10 AM	12	13	14 Ram Report Newsletter SIP Meeting 8:10 AM	15
16	17 Field Day**See Below PTO Meeting 6:30 PM	18	19	20 Last Day of School	21	22
23	24	25	26	27	28	29
30	31					

\*ALL SCHEDULED EVENTS ARE TENTATIVE AND SUBJECT TO CHANGE DUE TO HEALTH DIRECTIVES PUT INTO PLACE TO PREVENT FURTHER SPREAD OF COVID-19

**LEARN • THINK • LEAD**



## Reggie

Rousseau School is involved in the Domesti-Pup Program, which is an organization that trains and certifies therapy dogs to be used in schools. Reggie is a Golden Retriever and is a certified Edu-Pup Therapy dog. Reggie was trained at the Nebraska State Penitentiary and graduated from the program during the summer of 2013. Dr. Badje then adopted Reggie and brings him to school nearly every day.

Edu-Pups are natural teachers. They can bring a renewed inspiration and excitement into the learning process. Dogs can help develop self-esteem, responsibility, motivation, self-discipline and communication skills.

Children may see Reggie before/after school, in their classrooms, in the hallways and at Rousseau School events. If you have a child that may be allergic to dogs or frightened of dogs, please stop by the school office to fill out a form.

# June 2021



SUNDAY	MONDAY	TUESDAY	WEDNESDAY	THURSDAY	FRIDAY	SATURDAY
		1	2	3	4	5
6	7	8	9	10	11	12
13	14	15	16	17	18	19
20	21	22	23	24	25	26
27	28	29	30	ENJOY THE SUMMER!		

L I N C O L N   P U B L I C   S C H O O L S   •   L I N C O L N ,   N E B R A S K A

**\*ALL SCHEDULED EVENTS ARE TENTATIVE AND SUBJECT TO CHANGE DUE TO HEALTH DIRECTIVES PUT INTO PLACE TO PREVENT FURTHER SPREAD OF COVID-19**

***LEARN • THINK • LEAD***

## Methods of Communication

### School Newsletter

The **Ram Report** contains announcements, information, school events, and PTO events. This newsletter is sent electronically the last Friday of the month.

### Weekly Communication Folders

Typically, school news will be sent home via Friday folders. Please return the folder the next Monday including any notes to your child's teacher. General information will be sent with the oldest child in the family at Rousseau Elementary School.

### Community News

"Community News" is a newspaper distributed by Lincoln Public Schools, free to all elementary students the first week of every month from September through May. "Community News" replaces most informational flyers and can be used as a guide to community activities for students. The monthly school lunch menu is included in each issue of "Community News."

### School Website

Information is regularly updated on our website:  
<http://wp.lps.org/rousseau/>

### ParentVue

Parents may access communications, attendance information and more for their child through ParentVue. A "button" linking you to ParentVue can be found on our school website.

### School Messenger

This district-wide communication system sends school and district emails, texts, and phone calls to families with important information. Please be sure the school has your updated phone number and email address.

### FaceBook

Check out school happenings on our Facebook Page! "Like" us at <https://www.facebook.com/rousseaurams>  
Check out PTO happenings on our Facebook Page! Search Rousseau Elementary PTO and "Like" our page.

## Rousseau Elementary School

**3701 South 33rd Street**

**Lincoln, NE 68506**

**Phone 402-436-1165 • Fax: 402-458-3265**

**Website: [wp.lps.org/rousseau](http://wp.lps.org/rousseau) • Facebook: <https://www.facebook.com/rousseaurams>**

**Office Hours: 7:30 a.m.-4:30 p.m.**

**Principal: Dr. Wendy Badje**

**Assistant Principal: Wendy Barry**

# July 2021

SUMMER  
ROCKS!



SUNDAY	MONDAY	TUESDAY	WEDNESDAY	THURSDAY	FRIDAY	SATURDAY
				1	2	3
4	5	6	7	8	9	10
11	12	13	14	15	16	17
18	19	20	21	22	23	24
25	26	27	28	29	30	31

L I N C O L N   P U B L I C   S C H O O L S   •   L I N C O L N ,   N E B R A S K A

**\*ALL SCHEDULED EVENTS ARE TENTATIVE AND SUBJECT TO CHANGE DUE TO HEALTH DIRECTIVES PUT INTO PLACE TO PREVENT FURTHER SPREAD OF COVID-19**

***LEARN • THINK • LEAD***

## Custodial/Non-Custodial Parents

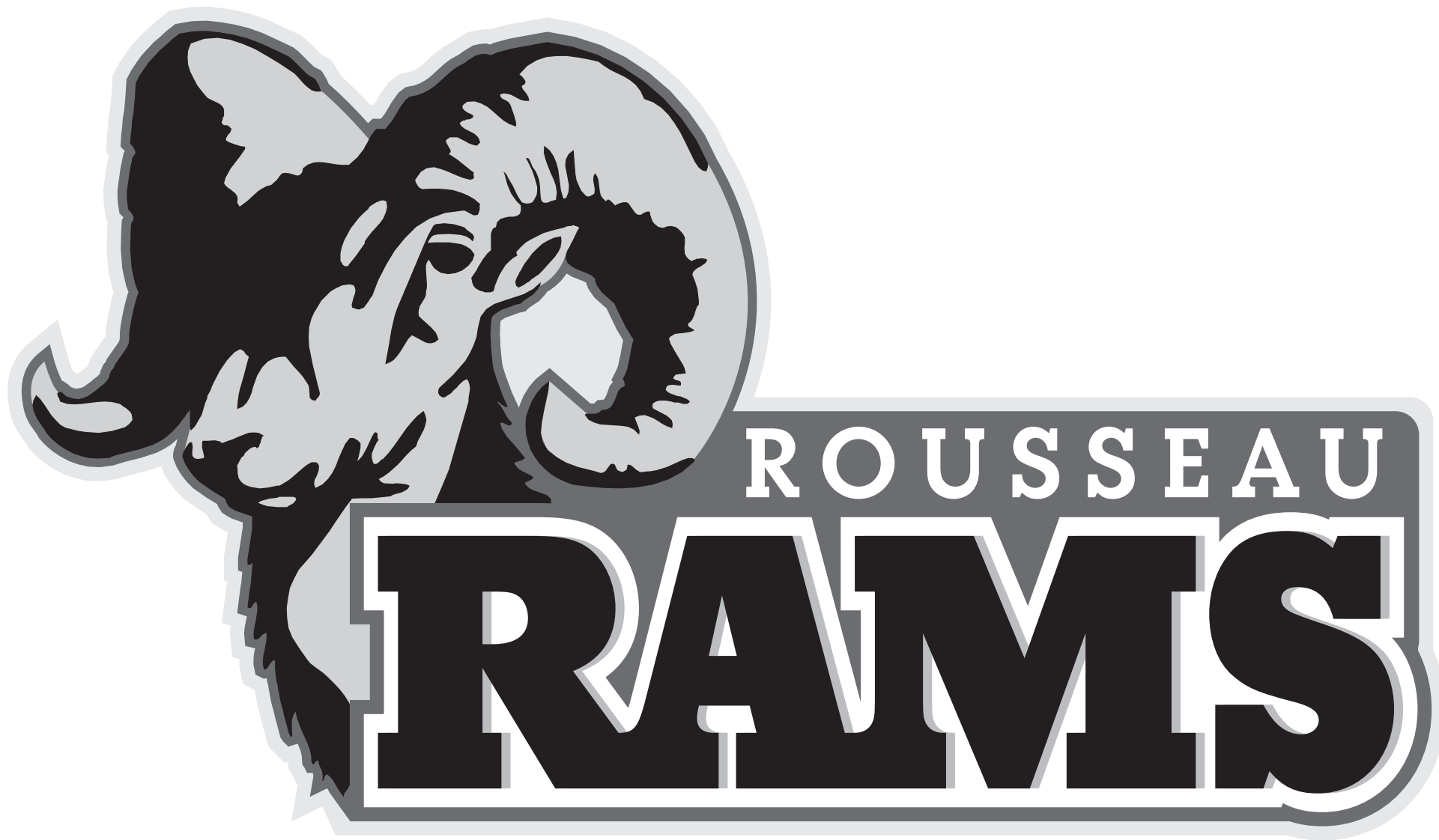
It is Lincoln Public Schools policy to foster and facilitate parental information about, and involvement in, the education of their children. Divorced and separated parents maintain all parental rights with their children unless altered by a court order.

If parental rights have been changed, the school principal must have access to a copy of the court order stipulating those changes. School officials will follow the directives stated in the order and in other such directives regarding access to the child as provided by the parent having legal custody.

With regard to visiting children during school hours, attempts will be made to accommodate both parents. However, in cases of concern and dispute between parents, the custodial parent's directive will be followed. Parents are asked to resolve issues of child visitation at school outside of the school setting.

Communication to parents is sent home on a weekly basis with each child. Occasionally, information will be mailed using the parent name and address provided at the time of enrollment. If a non-custodial parent or parent with joint custody wants information from school, please notify the office.





# Helpful Information

Child's Name \_\_\_\_\_ School Attending \_\_\_\_\_ Grade \_\_\_\_\_

Teacher \_\_\_\_\_ Room # \_\_\_\_\_ Lunch SNAP # \_\_\_\_\_

Other \_\_\_\_\_

Child's Name \_\_\_\_\_ School Attending \_\_\_\_\_ Grade \_\_\_\_\_

Teacher \_\_\_\_\_ Room # \_\_\_\_\_ Lunch SNAP # \_\_\_\_\_

Other \_\_\_\_\_

Child's Name \_\_\_\_\_ School Attending \_\_\_\_\_ Grade \_\_\_\_\_

Teacher \_\_\_\_\_ Room # \_\_\_\_\_ Lunch SNAP # \_\_\_\_\_

Other \_\_\_\_\_

Child's Name \_\_\_\_\_ School Attending \_\_\_\_\_ Grade \_\_\_\_\_

Teacher \_\_\_\_\_ Room # \_\_\_\_\_ Lunch SNAP # \_\_\_\_\_

Other \_\_\_\_\_

## LINCOLN BOARD OF EDUCATION 5905 O Street • Lincoln, NE 68510



Barbara Baier  
Lanny Boswell

Kathy Danek  
Connie Duncan  
Don Mayhew

Annie Mumgaard  
Bob Rauner

Stephen C. Joel, Superintendent

5/19

The Lincoln Public School District does not discriminate on the basis of race, color, national origin, religion, sex, marital status, sexual orientation, disability, age, pregnancy, childbirth or related medical condition, genetic information, citizenship status or economic status in its programs, activities and employment.