



Prescott Elementary

2020-2021

STUDENT HANDBOOK & CALENDAR

1930 S. 20th Street, Lincoln, NE 68502

Phone: 402-436-1161

Fax: 402-458-3261

<http://Prescott.lps.org>

ParentVue: <http://synergyvue.lps.org>

School Hours: 9:00 a.m. - 3:38 p.m.

PLC Days Dismissal: 2:18 p.m.

Principal - J.J. Wilkins

Assistant Principal - Shannon Mitchell

Special Education Coordinator -

Makaela Johnson

Welcome From Prescott Staff

Dear Students and Families,

Welcome to Prescott Elementary School! This handbook has been prepared for all students and parents/guardians to help answer questions you might have about the policies and practices of our school. **Please carefully review the contents of the handbook with your child.** If you have questions or concerns not covered in this handbook, please do not hesitate to call the school office, 402-436-1161.

On behalf of the entire staff, we look forward to working together to make this a productive and successful year of learning and growing.

J.J. Wilkins, Principal
& Prescott Staff



Prescott School Goals are:

1. To increase academic achievement in literacy and math of each Prescott student through effective teaching and learning.
2. To increase family involvement by providing activities and resources that support and sustain families.
3. To create a full-service learning community by partnering with the community and neighborhood.



Other information can be found in the LPS Important Information booklet at lps.org/about/important

Intent Of Student Handbook

This handbook is intended to be used by students, parents, and staff as a guide to the rules, regulations, and general information about Prescott Elementary School. Each student is responsible for becoming familiar with the handbook and knowing the information contained within it. Parents are encouraged to use this handbook as a resource and to assist their child in following the rules contained in this handbook.

Although information found in this handbook contains detailed and specific information on a variety of topics, the handbook is not intended to be all encompassing so as to cover every situation and circumstance that may arise during any school day, or school year. This handbook does not create a "contract." The administration reserves the right to make decisions and rule revisions at any time to implement the educational program and to assure the well being of all students. The administration will be responsible for interpreting the rules contained in the handbook. Should the situation or circumstance arise that is not specifically covered in this handbook, the administration will make a decision based upon all applicable school district policies, and state and federal statutes and regulations.

August 2020



SUNDAY	MONDAY	TUESDAY	WEDNESDAY	THURSDAY	FRIDAY	SATURDAY
						1
2	3	4	5	6	7	8
9	10 Safe Walk to School/ Back to School 6-7 PM	11	12 First Day of School Early release at 2:18 pm	13 Early release at 2:18 pm	14 Early release at 2:18 pm	15
16	17 First Day of Pre-School	18	19	20	21	22
23	24	25 PLC Day Dismiss 80 minutes early PLC Early Dismissal at 2:18 pm	26	27	28	29
30	31					

L I N C O L N P U B L I C S C H O O L S • L I N C O L N , N E B R A S K A

***ALL SCHEDULED EVENTS ARE TENTATIVE AND SUBJECT TO CHANGE DUE TO HEALTH DIRECTIVES PUT INTO PLACE TO PREVENT FURTHER SPREAD OF COVID-19.**

BEHAVIOR EXPECTATIONS

Students are responsible with the support of our staff, to conduct themselves in a manner that will create a safe learning environment at Prescott Elementary School. All appropriate behaviors are included in four simple guidelines for success.

Be Safe. Be Responsible. Be Respectful. Be Productive.

All students at Prescott participate in our paw reinforcement. Students get Paw tickets for following expectations. Paw tickets are then drawn for different rewards within the building. We also pass out paws for academic achievement, effort and progress. These are posted in our main hallway.

RESTROOM

- Keep hands, feet and objects to self
- Follow adult directions
- Respect the privacy of others
- Use school materials properly
- Stay in your own stall
- Level 0 voice
- One student per classroom per time
- Flush
- Wash hands with one pump of soap and two paper towels
- Put paper towels in garbage
- Have a pass or be with an adult
- Walk back to class when done

ARRIVALS/DISMISSALS

- Walk
- Keep hands, feet and objects to self
- Wear backpacks and coats
- Follow adult directions
- Level 0 voice
- Playground is closed before and after school
- All nuisance items stay at home

- Walk bikes on school grounds
- Follow your arrival and dismissal plans
- Use assigned entrances and exits
- Walk to your destinations
- Follow hallway expectations when arriving and leaving
- Students eating breakfast should arrive to school at 8:20 a.m.
- Students not eating breakfast should arrive to school at 8:45 a.m.

HALLWAYS

- Walk
- Keep hands, feet and objects to self
- Stay in straight line
- Follow adult directions
- Level 0 voice
- Use stop signs
- Walk on the right side
- Have a pass or be with an adult
- Walk to your destination and come right back

RECESS

- Use equipment in the correct way
- Keep hands, feet and objects to self
- No tag games
- Follow adult directions
- Leave nature on the ground
- Use kind words toward adults and peers
- Include everyone in play
- Stay in supervised zones
- Stay in your chosen zone
- Take care of equipment
- Put away equipment
- Begin recess with your lap
- Line up quickly
- Follow hallway expectations when arriving and leaving

CAFETERIA

- Walk
- Keep hands, feet and objects to self
- Stay in assigned seat
- Use tray with two hands
- Follow adult directions
- Clean up table area and floor

- Level 2 voice at table
- Get all necessary items in line
- Raise hand for help
- Sort trash accordingly
- Conversation at your own table
- Follow hallway expectations when arriving and leaving
- Use time to eat

OUTDOOR CLASSROOM

- Walk on the paths
- Keep hands, feet, and objects to self
- Use materials appropriately
- Take turns on the jumping stumps
- Feet stay on mulch path
- Clean up materials
- Leave nature on the ground
- Use materials appropriately
- Leave growing things to grow
- Level 3 voice
- Follow adult directions
- Share materials
- Clean up when instructed
- Treat materials with care
- Use kind words and actions to adults and peers
- Focus on activity
- Participate
- Give 100% effort the whole time

COURTYARD

- Walk
- Keep hands, feet, and objects to self
- Use materials appropriately
- Pond is for looking
- Feet stay on mulch path
- Keep objects out of the pond
- Level 3 voice
- Follow adult directions
- Keep nature on the ground
- Use kind words and actions to adults and peers
- Clean up materials
- Keep nature outside
- Treat materials with care
- Follow adult directions
- Flowers are for looking
- Focus on activity
- Participate
- Use 100% effort the whole time

September 2020



SUNDAY	MONDAY	TUESDAY	WEDNESDAY	THURSDAY	FRIDAY	SATURDAY
		1	2	3	4	5
6	7 Schools are Closed	8	9	10	11	12
13	14	15	16	17	18	19
20	21	22	23	24	25	26
27	28	29 PLC Day Dismiss 80 minutes early PLC Early Dismissal at 2:18 pm	30			

L I N C O L N P U B L I C S C H O O L S • L I N C O L N , N E B R A S K A

***ALL SCHEDULED EVENTS ARE TENTATIVE AND SUBJECT TO CHANGE DUE TO HEALTH DIRECTIVES PUT INTO PLACE TO PREVENT FURTHER SPREAD OF COVID-19.**

ParentVUE

Synergy ParentVUE is a component of the LPS Student Information portal that allows parents/guardians and students secure access to grades, assignments, attendance information, and much more. Assignments and student performance can be viewed as soon as entries are made by teachers into their electronic grade books. ParentVUE is not intended to replace direct communication between students/parents/teachers or other school staff members. If you have questions, please discuss the information with your student first. Students are strongly encouraged to discuss class progress directly with their teachers. If further clarification is needed, parents should contact the teacher directly.

Information available via ParentVUE includes:

- Communications from Teachers
- Attendance
- Student Schedules
- Class Websites
- Course History
- Progress Grades
- Assignment Calendars
- Immunization Summary
- Report Card (current year)

This secured access requires a confidential username and password that you create to log in to see your student's information. This resource will help you stay informed about your child's progress. Please read the following information carefully.

RELEASING STUDENTS

For the safety of students, parents/guardians must come to the main entrance when picking up their child before the regular dismissal time. Office staff will then contact the classroom teacher and the student will be sent to the main entrance.

ABSENCES

If your child is unable to attend school, a telephone call to Prescott is requested 436-1161. Unless the school is notified, a call will be made to your home or place of work to verify the absence.



In case of emergency...

Can we reach you by telephone?
Please be sure the school has
your phone number.

BREAKFAST & LUNCH

Parents may **NOT** bring in food for children other than their own. -LPS K-5
Common Practices

BREAKFAST: 8:20-8:50 a.m.

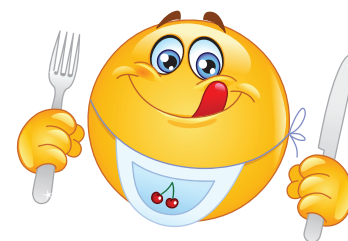
MEAL PRICES *(prices subject to change)*

Breakfast

Students \$1.30
Reduced 30¢
2nd Breakfast \$2.35
Single Milk 50¢

Lunch

Students \$2.45
Reduced 40¢
2nd Lunch \$3.80
Single Milk 50¢



LUNCH/RECESS TIMES

GRADE	LUNCH	RECESS
Kindergarten	10:55 - 11:25	10:45 - 10:55
1st Grade	11:25 - 11:50	11:50 - 12:00
2nd Grade	12:15 - 12:40	12:40 - 1:00
3rd Grade	11:55 - 12:15	12:15 - 12:35
4th Grade	12:50 - 1:10	1:10 - 1:30
5th Grade	1:10 - 1:40	11:25 - 11:45

October 2020



SUNDAY	MONDAY	TUESDAY	WEDNESDAY	THURSDAY	FRIDAY	SATURDAY
				1 Picture Day	2	3
4	5	6	7	8	9	10
11	12	13	14	15 No School for Elementary Students	16 Schools are Closed	17
18	19	20	21	22	23	24
25	26 PLC Day Dismiss 80 minutes early PLC Early Dismissal at 2:18 pm PARENT TEACHER CONF 4:00-7:30 pm Scholastic Book Fair	27	28	29 PARENT TEACHER CONF 4:00-7:30 pm Scholastic Book Fair	30	31

L I N C O L N P U B L I C S C H O O L S • L I N C O L N , N E B R A S K A

***ALL SCHEDULED EVENTS ARE TENTATIVE AND SUBJECT TO CHANGE DUE TO HEALTH DIRECTIVES PUT INTO PLACE TO PREVENT FURTHER SPREAD OF COVID-19.**

PRESCOTT ATTENDANCE POLICY

We know that students who attend school regularly and on time perform better in school. It is important to a student's success that the habit of regular and punctual attendance be formed. It is our goal to have every student in school as many days as possible, and to work with parents and guardians to help students understand the importance of being in school. A student may be excused for illness, or if by parent request, the student may miss school for a family emergency or special family need, including a religious observance. Students may also be excused from school to participate in a school-approved activity.

Students not in class on time will be counted as tardy unless excused by previous arrangement with the school office (402-436-1161).



MAKE-UP WORK

We appreciate parent/guardians' conscientious regard for picking up homework for their child.

- ✓ If your child will be absent only one day, work may be made up or taken home upon return to school.
- ✓ If your child will be absent for an extended period of time, please contact the classroom teacher to plan for completion of work.

Please call the school

402-436-1161

in the morning to request homework to be picked up after school.

ATTENDANCE AT SPECIAL EVENTS, AFTER-SCHOOL AND/OR EVENING ACTIVITIES

Students attending after-school and or evening activities at Prescott School must be accompanied by a parent/guardian. Students must be in attendance during the school day in order to attend special events during the school day, after school and/or evening activities.



November 2020



SUNDAY	MONDAY	TUESDAY	WEDNESDAY	THURSDAY	FRIDAY	SATURDAY
1 Daylight Savings Time Ends	2	3 Election Day Schools are Closed	4	5	6	7
8	9	10 Election Day	11	12	13 World Kindness Day	14
15	16	17	18	19	20	21
22	23	24 PLC Day Dismiss 80 minutes early PLC Early Dismissal at 2:18 pm	25	26	27	28
29	30 No School for Elementary Students	Schools are Closed				

L I N C O L N P U B L I C S C H O O L S • L I N C O L N , N E B R A S K A

*ALL SCHEDULED EVENTS ARE TENTATIVE AND SUBJECT TO CHANGE DUE TO HEALTH DIRECTIVES PUT INTO PLACE TO PREVENT FURTHER SPREAD OF COVID-19.

Readmission Following Illness

Policies regarding readmission of students following illness are as follows:

Students should have a note from parent/guardian explaining the cause of the absence if the parent has not been in contact with the school during the absence. In doubtful cases the school may request a statement from a physician.

The student who has been absent from school will report to the teacher with a note and the teacher will decide whether or not to refer the student to the principal or nurse. If the absence is of three days or more or due to a communicable disease, the student should be checked by the nurse, health technician, principal, or principal's designee.



Medical and Dental Appointments on School Time

The circumstances for all absences from school will be identified as either School Excused or Not School Excused. **Not School Excused** absences include parent acknowledged (PA), illness (IL), and truant (TR). Medical and dental appointments during the school day are considered parent acknowledged absences. School staff will keep parents informed regarding the attendance of their student(s) and will assist parents in correcting attendance problems. It is the responsibility of the student to make up work which has been missed because of any absence. The school staff will support the student's initiative to make up work missed. You may be asked or you may wish to get documentation from your child's physician for chronic illnesses. Use the following LPS Web address to get more information regarding absences: <http://www.lps.org/parents/>. Parents must check students out at the SEM desk and check them back into school at the SEM desk upon return to school. A computerized record is kept of when the student is out of the building. It is necessary that the child check in and out through the office.



Student Use of School Phone & Cell Phones

Students will be permitted to call home regarding school matters upon obtaining permission from the classroom teacher. Calls by students must be kept to a minimum, as there are a very limited number of phone lines in and out of school. Students are asked to make arrangements for participating in after-school activities or going home with a friend before leaving home in the morning.

Student use of cell phones is prohibited at school. We would ask that cell phones remain at home. If a cell phone is brought to school, we will keep it in the office. Exceptions to this may be decided on a case-by-case basis. Please feel free to visit with us about special circumstances.



Safety Drills

All schools have regular drills so students know what to do in case of emergency, fire, or severe weather in order to be safe. The safety of students is a top priority. All schools cooperate with the fire department to make sure the most effective safety procedures are followed.



December 2020



SUNDAY	MONDAY	TUESDAY	WEDNESDAY	THURSDAY	FRIDAY	SATURDAY
		1	2	3	4	5
6	7	8	9	10	11	12
13	14	15 PLC Day Dismiss 80 minutes early PLC Early Dismissal at 2:18 pm	16	17	18	19
20	21	22	23	24	25	26
27	28	29	30	31	Schools are Closed - Winter Break	
Schools are Closed - Winter Break						

L I N C O L N P U B L I C S C H O O L S • L I N C O L N , N E B R A S K A

***ALL SCHEDULED EVENTS ARE TENTATIVE AND SUBJECT TO CHANGE DUE TO HEALTH DIRECTIVES PUT INTO PLACE TO PREVENT FURTHER SPREAD OF COVID-19.**

FEDERAL PROGRAMS

Schoolwide Title I Program

Prescott is a Schoolwide Title I school. Prescott utilizes federal funding to supplement the educational programming provided by the Lincoln Public Schools. The Continuous School Improvement Plan describes the manner in which these funds are utilized to implement Prescott's goals. We would like to encourage the involvement of parents/guardians in the formulation and implementation of this plan.

PRESCOTT SCHOOL–TITLE I PARENT INVOLVEMENT POLICY *(August, 2019)*

Prescott Elementary School intends to follow the Title I Parent and Family Engagement Policy guidelines in accordance with federal law, Section 1116(a -f) ESSA, (Every Student Succeeds Act) of 2015.

In General,

Prescott Elementary School shall jointly develop with, and distribute to, parents and family members of participating children a written parent and family engagement policy, agreed on by such parents, that shall describe the means for carrying out the requirements. Parents shall be notified of the policy in an understandable and uniform format and, to the extent, practicable, provided in a language the parents can understand. The policy shall be made available to the local community and updated to meet the changing needs of parents and the school.

Specifically,

- Prescott Elementary School shall provide opportunities for the participation of parents and family members including those with migratory children, limited English proficiency, or have disabilities. Parent shall be notified of this Parent and Family Engagement Policy, information related to school and parent programs, meetings, and other activities in an understandable and uniform format and to the extent practicable provided in a language the parents can understand;
- Prescott Elementary School shall convene an annual parent meeting scheduled at a convenient time, to which all parents of participating children shall be invited and encouraged to attend, to inform parents of Prescott Elementary School's participation under this part and to explain the requirements of this part, and the right of the parents to be involved;
- Prescott Elementary School shall involve parents in an organized, ongoing, and timely way, in the planning, review, and improvement of this Parent and Family Engagement Policy;
- Prescott Elementary School shall provide opportunities for parents and family members to participate in decisions relating to the education of their children. Prescott Elementary School shall provide other reasonable support for parental involvement activities;
- Prescott Elementary School shall provide parents of participating children timely information about programs under this part, a description and explanation of the curriculum in use, the forms of academic assessment used to measure student progress and the achievement levels of the challenging State academic standards. Prescott Elementary School will provide assistance, opportunities, and/or materials and training to help parents work with their children to improve their children's academic achievement in a format, and when feasible, in a language the parents and family members can understand;
- Prescott Elementary School shall educate teachers, specialized instructional support personnel, principals, and other school leaders, with the assistance of parents in the value and utility of contributions of parents, how to reach out to, communicate with and work with parents as equal partners;
- Prescott Elementary School shall coordinate and integrate parental involvement programs and activities with other Federal, State and local programs, including preschool programs that encourage and support parents in more fully participating in the education of their children.

January 2021



SUNDAY

MONDAY

TUESDAY

WEDNESDAY

THURSDAY

FRIDAY

SATURDAY

							1	2
							Schools are Closed - Winter Break	
3	4	5	6	7	8	9		
10	11	12	13	14	15	16		
17	18	19	20	21	22	23		
24	25	26	27	28	29	30		
31								

L I N C O L N P U B L I C S C H O O L S • L I N C O L N , N E B R A S K A

*ALL SCHEDULED EVENTS ARE TENTATIVE AND SUBJECT TO CHANGE DUE TO HEALTH DIRECTIVES PUT INTO PLACE TO PREVENT FURTHER SPREAD OF COVID-19.



The Prescott School Parent Teacher Organization (PTO) is a vital part of Prescott's success with children. As an organization, they represent parents/guardians and teachers and they organize events and projects that serve children and families. PTO meetings are held Thursday evenings at 6:30 p.m. See the calendar for exact dates. All teachers and families are encouraged to join PTO.

President - Karin Peters
keithandkarin@gmail.com – 402-202-0790

Treasurer - Gordon Coke
gcoke@flatwatergroup.com – 402-770-8583

Volunteer Coordinator - Annie Ratliff
adengenhardt51@gmail.com – 402-427-4660

Sheila Kadoi - Skadoi77@gmail.com
Jamie Holbein Swanson - jswanson@lps.org



The logo for the Prescott Panthers is centered on the page. It features a stylized panther head with a white outline, set within a shield shape. Below the shield, the word 'PRESCOTT' is written in large, bold, white capital letters with a black outline. Underneath 'PRESCOTT', the word 'PANTHERS' is written in smaller, white capital letters with a black outline. The entire logo is set against a background of horizontal lines.

February 2021



SUNDAY	MONDAY	TUESDAY	WEDNESDAY	THURSDAY	FRIDAY	SATURDAY
	1	2	3	4	5	6
7	8	9	10	11	12	13
14	15 No School for Elementary Students	16	17	18	19	20
21	22	23 PLC Day Dismiss 80 minutes early PLC Early Dismissal at 2:18 pm PARENT TEACHER CONF 4:00-7:30 pm Scholastic Book Fair	24	25 PARENT TEACHER CONF 4:00-7:30 pm Scholastic Book Fair	26	27
28						

L I N C O L N P U B L I C S C H O O L S • L I N C O L N , N E B R A S K A

***ALL SCHEDULED EVENTS ARE TENTATIVE AND SUBJECT TO CHANGE DUE TO HEALTH DIRECTIVES PUT INTO PLACE TO PREVENT FURTHER SPREAD OF COVID-19.**

ARRIVAL PROCEDURES

The Prescott campus is closed until 8:35 am.

Students eating breakfast should not arrive on school grounds before 8:35 am and should enter building through Door 1.

Students not eating breakfast at school should not arrive on school grounds before 8:50 am.

Students not eating breakfast will enter the building through the following doors:

- Door 9 – Kindergarten
- Door 1 – 1st Grade
- Door 1 – 2nd Grade
- Door 8 – 3rd Grade
- Door 8 – 4th Grade
- Door 9 – 5th Grade

Students will enter the building at 8:55 am and report to their classroom.

If your youngest child is in Kindergarten or 5th grade, please drop all children off at Door 9 (on Harwood).

If your youngest child is in 1st or 2nd grade, please drop all children off on S. 20th Street. They may enter school grounds through the main entrance (Door 1).

If your youngest child is in 3rd or 4th grade, please drop off at Door 8 (on Harwood).

It works best if you pull in to drop your child off and then pull away from the curb as soon as possible so the next person can pull in.

DISMISSAL PROCEDURES

All students are dismissed from the building at 3:38 pm.

All students must go directly home or to a school-sanctioned after school activity.

Teachers will escort students out their designated exit door.

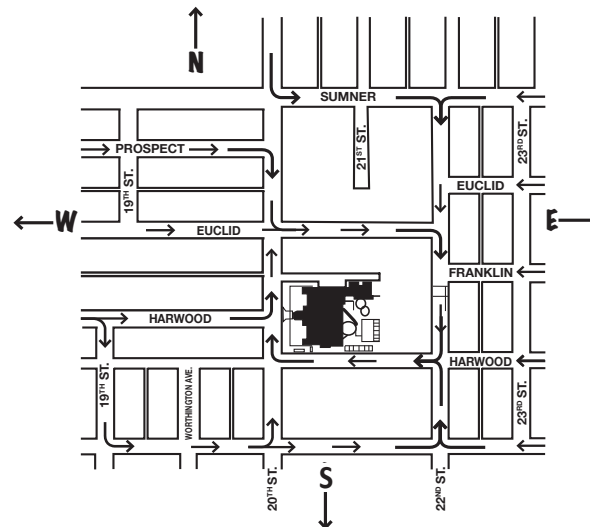
School campus (including playground) is closed until 6:00 pm except for use by school childcare and clubs. Reservations for rooms/playground should be entered in the district Archibus system.

Cars need to follow designated traffic flow (see map).

Students EXIT using the following doors:

- Door 9 – Kindergarten
- Door 1 – 1st Grade
- Door 1 – 2nd Grade
- Door 7 – 3rd Grade
- Door 8 – 4th Grade
- Door 9 – 5th Grade

Having a pick up plan with your child is helpful. Please encourage your child to cross the street only at crosswalks. We will have supervision at the following crosswalks at dismissal time: 20th and Harwood.



LATE PICK UP

Parents must come to the Main Entrance and sign out students not picked up by 3:45 p.m. Children will not be allowed to wait outside or go to cars without an adult picking them up.

Police may be called when children are not picked up by 4:00 p.m.

DROP OFF AND PICK UP

Front street loading zone is for pick up and drop off only. NO PARKING IS ALLOWED. The loading zone is for flow-through traffic and bus only.

If you come early for your student you will need to park on a side street and then drive around to the loading zone once your child is out front. Dismissal is at 3:38 p.m.

If you want to come up to the building and wait for your child you will need to park on one of the side streets and walk over to the building.

TRAFFIC FLOW

The map shows the directions for safely dropping off or picking up students at Prescott School. Your cooperation in following this traffic pattern will ensure safe arrival and dismissals at Prescott.

Whenever you are dropping off or picking up your child on Harwood Street, always drive WEST from 22nd Street, cars should be on the EAST side of the street.

When dropping off or picking up students in front of the school on 20th Street, cars should be on the EAST side of the street heading NORTH.

If these directions are followed, children will always be expected to use the crosswalks and students will not be allowed to cross in the middle of the street to enter a car.

March 2021



SUNDAY	MONDAY	TUESDAY	WEDNESDAY	THURSDAY	FRIDAY	SATURDAY
	1	2	3	4	5	6
7	8	9	10	11	12	13
14	Schools are Closed					20
Daylight Savings Time Begins	15	16	17	18	19	20
21	22	23	24	25	26	27
28	29	30	31			
		PLC Day Dismiss 80 minutes early PLC Early Dismissal at 2:18 pm				

L I N C O L N P U B L I C S C H O O L S • L I N C O L N , N E B R A S K A

***ALL SCHEDULED EVENTS ARE TENTATIVE AND SUBJECT TO CHANGE DUE TO HEALTH DIRECTIVES PUT INTO PLACE TO PREVENT FURTHER SPREAD OF COVID-19.**

Parent Teacher Conferences

October 27 & 29, 2020

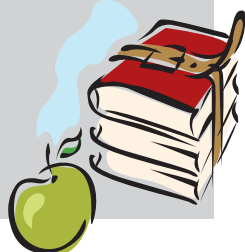
and

February 23 & 25, 2021



CONTACTING YOUR CHILD'S TEACHER

Parents/Guardians are encouraged to call or email their child's classroom teacher to arrange for conferences or when questions arise that can be handled with a brief discussion. The best time to reach a teacher by phone is before the student-day begins or after school. During instructional time, phone messages will be taken for teachers. For involved problems such as student evaluation, curriculum concerns, and school policy, a parent-teacher conference rather than a conversation by telephone is encouraged.



COMMUNICATING STUDENT PROGRESS:

Report Cards & Parent-Teacher Conferences

Lincoln Board of Education states (Policy 6570) that "student progress will be reported formally to parents/guardians at least four times each year." Information about elementary student progress is reported in four areas:

1. Progress through district curriculum objectives.
2. Performance in assigned curriculum level.
3. Effort.
4. Use of effective learning or study skills.

Parent-Teacher conferences are scheduled twice a year, typically during the first and third quarters of the school year. Parents with immediate questions about their child's academic progress are encouraged to contact the teacher at any time.



VISIT OUR WEBSITE

<http://Prescott.lps.org>

For the most updated computer class news, link, and resources.



LOST AND FOUND

Most lost articles that are found are turned in to the office and placed in the Lost and Found table. Whenever possible, label your child's articles. Encourage your child to check periodically for lost articles. Articles not claimed by semester break and at the end of the school year are donated to a local children's charity.



April 2021



SUNDAY	MONDAY	TUESDAY	WEDNESDAY	THURSDAY	FRIDAY	SATURDAY
				1	2 Schools are Closed	3
4	5 No School for Elementary Students	6	7	8	9	10
11	12	13	14	15	16	17
18	19	20	21	22	23	24
25	26	27 PLC Day Dismiss 80 minutes early PLC Early Dismissal at 2:18 pm	28	29	30	

L I N C O L N P U B L I C S C H O O L S • L I N C O L N , N E B R A S K A

***ALL SCHEDULED EVENTS ARE TENTATIVE AND SUBJECT TO CHANGE DUE TO HEALTH DIRECTIVES PUT INTO PLACE TO PREVENT FURTHER SPREAD OF COVID-19.**



BULLYING

If you feel that your child is being bullied by peers, please contact your child's teacher or the building principal, J.J. Wilkins, jwilkins@lps.org or (402)436-1161. All reported incidences of bullying/unsafe behavior will follow the protocol outlined in Lincoln Public Schools Board Policy 5482: Anti-Bullying Policy.

Bullying is unwanted, aggressive behavior among school aged children that involves a real or perceived power imbalance. The behavior is repeated, or has the potential to be repeated, over time.

In order to be considered bullying, the behavior must include:

- Imbalance of Power: Kids who bully use their power—such as physical strength, access to embarrassing information, or popularity—to control or harm others. Power imbalances can change over time and in different situations, even if they involve the same people.
- Repetition: Bullying behaviors happen more than once or have the potential to happen more than once.
- Hurtful aggressive physical and/or verbal behavior.

Bullying includes actions such as making threats, spreading rumors, attacking someone physically or verbally, and excluding someone from a group on purpose.

As an added prevention piece, please discuss with your child adults in the building who they can talk to if they feel that they are being bullied or are in an unsafe situation. These people may include, but are not limited to, their teacher, the administrator, school counselor, school psychologist, school social worker or any other adult in the building that they have built a positive relationship with.

Students are taught about what bullying looks like and sounds like, along with how to advocate for themselves through the District's Second Step program.



May 2021



SUNDAY

MONDAY

TUESDAY

WEDNESDAY

THURSDAY

FRIDAY

SATURDAY

						1
2	3	4	5	6	7	8
9	10	11	12	13	14	15
16	17	18	19	Last Day of School	20	21
22	23	24	25	26	27	28
29	30	31				

L I N C O L N P U B L I C S C H O O L S • L I N C O L N , N E B R A S K A

*ALL SCHEDULED EVENTS ARE TENTATIVE AND SUBJECT TO CHANGE DUE TO HEALTH DIRECTIVES PUT INTO PLACE TO PREVENT FURTHER SPREAD OF COVID-19.

PRESCOTT PRIDE CLUB

Family Service Lincoln provides a quality before and after school child care program to students in K-5 known as Pride Club. Pride Club sessions run from 7:00-9:00 a.m and 3:38-6:00 p.m Monday through Friday on regular school days. To enroll your student in Family Service's before and after school programming please visit www.familyservicelincoln.org or call 402-441-7949 for more information.

ACADEMIC AND ENRICHMENT CLUBS

Prescott CLC offers a variety of FREE special interest clubs throughout the year. Through collaborations with University of Nebraska, Nebraska Arts Council, Prescott Parents/Staff, and many other community partners, Prescott is able to offer clubs to all students in grades K-5. Clubs may be subject to specific grade levels, special invitation, and first come basis. All students participating in clubs receive a snack and are expected to follow school and CLC behavior expectations. Registration occurs twice a year and will be sent home in Friday Folders.

SCHOOL NEIGHBORHOOD ADVISORY COMMITTEE (S.N.A.C.)

The SNAC committee consists of neighborhood, community and parent members who promote services which meet neighborhood needs, that build on neighborhood assets and who develop relationships with family, community councils and task forces that support the needs of the school and education programs.



COMMUNICATION

School Newsletter

The Prescott Principal Update contains announcements, information, school events, etc. This newsletter is sent weekly through SchoolMessenger, grade level newsletters are posted on the grade level team Prescott websites.

Weekly Communication Folders:

Typically, school news will be sent home via Friday Folders. Please return the folder the next day including any notes to your child's teacher. General information will be sent with the oldest child in the family attending Prescott School.

Community News:

"Community News" is a newspaper distributed by Lincoln Public Schools, free to all elementary students the first week of every month from September through May. "Community News" replaces most informational flyers and can be used as a guide to community activities for students. The monthly school lunch menu is included in each issue of "Community News."

School Website: Information is regularly updated on our website: <http://wp.lps.org/prescott/>

ParentVue: Parents may access communications, attendance information and more for their child through ParentVue. A "button" linking you to ParentVue can be found on our school website.

School Messenger: This district-wide communication system sends school and district emails, texts, and phone calls to families with important information. Please be sure the school has your updated phone number and email address.

Facebook: www.facebook.com/PrescottSchool/



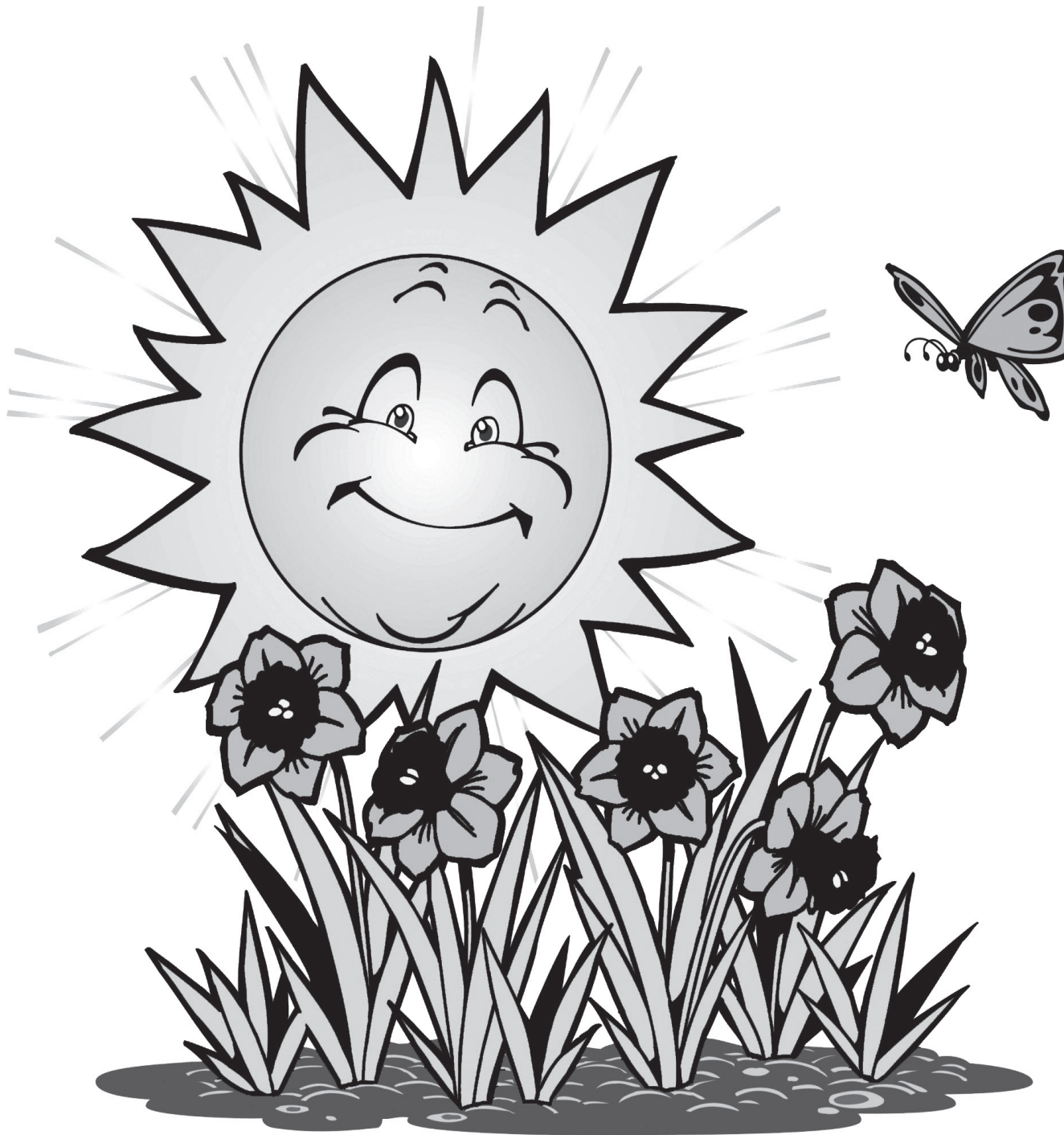
June 2021



SUNDAY	MONDAY	TUESDAY	WEDNESDAY	THURSDAY	FRIDAY	SATURDAY
		1	2	3	4	5
6	7	8	9	10	11	12
13	14	15	16	17	18	19
20	21	22	23	24	25	26
27	28	29	30	ENJOY THE SUMMER!		

L I N C O L N P U B L I C S C H O O L S • L I N C O L N , N E B R A S K A

***ALL SCHEDULED EVENTS ARE TENTATIVE AND SUBJECT TO CHANGE DUE TO HEALTH DIRECTIVES PUT INTO PLACE TO PREVENT FURTHER SPREAD OF COVID-19.**



2020-2021 Student Calendar



Lincoln Public Schools
Lincoln, Nebraska



Revised 3/20

2020 JULY							2021 JANUARY						
S	M	T	W	T	F	S	S	M	T	W	T	F	S
				1	2	3	3	4	5	6	7	8	9
5	6	7	8	9	10	11	10	11	12	13	14	15	16
12	13	14	15	16	17	18	17	18	19	20	21	22	23
19	20	21	22	23	24	25	24	25	26	27	28	29	30
26	27	28	29	30	31		31						

AUGUST							FEBRUARY						
S	M	T	W	T	F	S	S	M	T	W	T	F	S
						1							1
2	3	4	5	6	7	8	7	8	9	10	11	12	13
9	10	11	12	13	14	15	14	15	16	17	18	19	20
16	17	18	19	20	21	22	21	22	23	24	25	26	27
23	24	25	26	27	28	29	28						
30	31												

SEPTEMBER							MARCH						
S	M	T	W	T	F	S	S	M	T	W	T	F	S
						1						5	6
6	7	8	9	10	11	12	7	8	9	10	11	12	13
13	14	15	16	17	18	19	14	15	16	17	18	19	20
20	21	22	23	24	25	26	21	22	23	24	25	26	27
27	28	29	30				28	29	30	31			

OCTOBER							APRIL						
S	M	T	W	T	F	S	S	M	T	W	T	F	S
						1						2	3
4	5	6	7	8	9	10	4	5	6	7	8	9	10
11	12	13	14	15	16	17	11	12	13	14	15	16	17
18	19	20	21	22	23	24	18	19	20	21	22	23	24
25	26	27	28	29	30	31	25	26	27	28	29	30	

NOVEMBER							MAY						
S	M	T	W	T	F	S	S	M	T	W	T	F	S
1	2	3	4	5	6	7							1
8	9	10	11	12	13	14	2	3	4	5	6	7	8
15	16	17	18	19	20	21	9	10	11	12	13	14	15
22	23	24	25	26	27	28	16	17	18	19	20	21	22
29	30						23	24	25	26	27	28	29

DECEMBER							JUNE						
S	M	T	W	T	F	S	S	M	T	W	T	F	S
						1							1
6	7	8	9	10	11	12	6	7	8	9	10	11	12
13	14	15	16	17	18	19	13	14	15	16	17	18	19
20	21	22	23	24	25	26	20	21	22	23	24	25	26
27	28	29	30	31			27	28	29	30			

- First and last days of class for students
- PLC days-early dismissal *Plan Days and PLC Days are subject to change
- Schools not in session
- Students in elementary schools NOT in attendance (Plan Days)
*Plan Days and PLC Days are subject to change
- Quarter start dates
- Quarter end dates

Thursday, May 20, 2021

Bryan Community Focus Program (at East)

Sunday, May 23, 2021

PBA: LHS/LSW/LNS | Devaney: LNE/LSE/East

July 2021



SUNDAY	MONDAY	TUESDAY	WEDNESDAY	THURSDAY	FRIDAY	SATURDAY
SUMMER ROCKS!				1	2	3
4	5	6	7	8	9	10
11	12	13	14	15	16	17
18	19	20	21	22	23	24
25	26	27	28	29	30	31

L I N C O L N P U B L I C S C H O O L S • L I N C O L N , N E B R A S K A

*ALL SCHEDULED EVENTS ARE TENTATIVE AND SUBJECT TO CHANGE DUE TO HEALTH DIRECTIVES PUT INTO PLACE TO PREVENT FURTHER SPREAD OF COVID-19.

Prescott School-Parent Compact 2020-2021

This Title I School-Parent Compact has been jointly developed with parents and outlines how parents, the entire school staff, and students will share the responsibility for improved student academic achievement and the means by which the school and parents will build and develop a partnership to help children achieve the State's high academic standards. At parent-teacher conferences, the compact shall be discussed as it relates to the individual child's achievement.

Teacher/School:

It is important that students achieve. I agree to do the following:

1. Provide high-quality curriculum and instruction in a supportive and effective learning environment to enable children to meet the challenging state academic standards.
2. Regularly communicate with parents on their child's progress.
3. Demonstrate professional behavior and positive attitude.
4. Use effective teacher strategies that support student learning.
5. Treat all students with courtesy and respect in a safe, positive environment.

Teacher Signature _____

Parent/Caring Adult:

I want my child to achieve; therefore I will encourage him/her by doing the following:

1. Communicate and work with teachers and school staff on an ongoing basis to be involved and support my child's learning.
2. Support your child's learning--volunteer in their classroom; participate, as appropriate, in decisions related to their education, attend parent/teacher conferences, guide positive use of extracurricular time.
3. Make sure my child is at school every day and on time, unless he/she is ill.
4. Provide a quiet place and time to do schoolwork and encourage my child to complete schoolwork.

Parent Signature _____

Student:

I know my education is important to me. It is important that I work to the best of my ability. I agree to do the following:

1. Be at school every day and on time unless I am sick.
2. Come to school each day prepared with supplies and an attitude to learn.
3. Be safe, responsible, and productive and take responsibility for my own behavior.
4. Respect and cooperate with other students and adults.
5. Return completed schoolwork on time.
6. Talk to my parents what I am learning in school.

Student Signature _____



PRESCOTT STAFF 2020-2021

KINDERGARTEN

Alison Bowder	Room 104A
Rachel Frank	104F
Lindsey Jones	105
Nikki Verkamp	107

1st GRADE

Jess Brinkmeyer	109
Ali Cheney	110
Kaylee Urbanovsky	118
Sydney Weddleton	116
Michelle Youker	119

2nd GRADE

Hannah Heyl	216
Jordan Peppmuller	201
Kaylee Tolle	217
Jolene Walker	215

3rd GRADE

Janelle Franklin	209
Sara Majid	212
Misty Murphy	210
Amanda Wilkinson	211

4th GRADE

Tracy Areman	Room 207
Andrea Myers	205
Hayat Ramadan	208
Andrea Stubbendick	206

5th GRADE

Bryce Cudaback	202
Megan Murphy	203
Rebecca Hughes	102
Gina Boltz	120

ELL

Tianna Bankhead	103
Kaysha Brady	106
Amy Budler	GL004
Laura Deans	GL001

SPECIALIST TEAM

Denise Ebeler - Media/Computer	214/213
Jennifer Hermesen - Art	303
Saul Perez - P.E.	Gym
Asael Arevalo - Music	301
Amy Gammel - Band	Stage/111
Carson McNeil - Strings	Stage/111

RESOURCE

Abby Barna	Room 200
Tayler Burt	200
Nicole Colfack	115
Halsey Robb	200
Jenna Satterly	218

ECSE RESOURCE

Katie Hamik	114
Rachel Pickering	114

EARLY CHILDHOOD

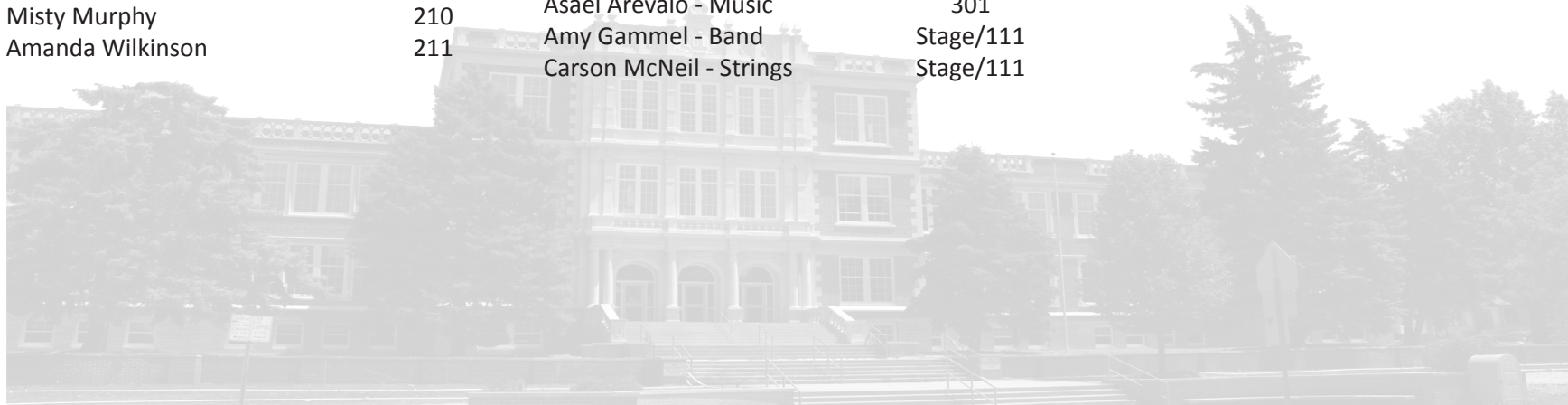
Lorrin Adams	114am
Julie Erickson	114pm

OFFICE

Toni Benzing	100
Robin Klipper-Fischbein	100

HEALTH OFFICE

Kristina Murrell, School Nurse	101
Sarah Mutthersbough	101



PLEASE NOTE:

All procedures, guidelines and dates outlined in these documents are subject to change, based on recommendations and health directives put into place by the Lincoln Lancaster County Health Department (LLCHD) and the Nebraska Department of Education. Please keep in mind that, as with our Standard Response Protocols, every Lincoln Public Schools building or program which provides services may not always be in the same risk category.