

Past Spelling Bee Winners

2011	Logan Myers	Scott	6th grade
2010	Sarah DiMagno	Irving	8th grade
2009	Rebekah Laybourn	Dawes	6th grade
2008	Anna Lauren Higgins	Lefler	7th grade
2007	Greg Ward	Dawes	8th grade
2006	Brian Burris	Lux	7th grade
2005	Alem Malik	Scott	7th grade
2004	Ali Malik	Scott	8th grade
2003	Mohammed Ali	Mickle	6th grade
2002	Cathy Sypal	Lux	6th grade
2001	Alexander Lin	Lux	6th grade
2000	Noah Weiss	Pound	7th grade
1999	Will Fruhwirth	Lux	7th grade
1998	Arthur Reeves	Culler	7th grade
1997	Eric Schmidt	Lux	8th grade
1996	Bryan Gordon	Park	8th grade
1995	Joey Gourlay	Prescott	6th grade
1994	Laura Dewitt	Pound	7th grade
1993	Kayce Kahl	Meadow Lane	5th grade
1992	C. J. Brown	Irving	8th grade
1991	C. J. Brown	Irving	7th grade
1990	Becky Grossman	East	7th grade
1989	Heather Farris	Pound	8th grade
1988	Cynthia Piggee	Pound	7th grade

We extend our gratitude to

The Lincoln Journal Star

A Ventures in Partnership Partner with
the Lincoln Public Schools English Language Arts program
for cooperatively sponsoring
this Oral Spelling Bee.

and

Ventures In Partnerships

A cooperative project of Lincoln Public Schools,
Lincoln Education Association and the Lincoln business community.

The Lincoln Public Schools 2012 Oral Spelling Bee
is a function of the
Department of Curriculum
Barbara Jacobson, Director
Marilyn Moore, Associate Superintendent
for Instruction

Study Tips

You might want to consider getting organized for your study of spelling. Start to compile a spelling notebook. Different sections can feature troublesome word endings, homonyms, troublesome double letter spellings, or specialized terms.

You will also want to visit an Internet Website for other preparation ideas. The Scripps National Spelling Bee maintains a Website with tips and information about the Spelling Bee. Its address is: <http://www.spellingbee.com> Click on "Students and Parents" and then "Study Tips". There are a number of options for practice. Elementary principals and middle school English/Language Arts liaisons, have additional practice word sheets they can also provide.

For more information, call or write:

The English Office
Teaching and Learning Center
P.O. Box 82889
Lincoln, Nebraska 68501
402-436-1644 or 402-436-1803

or

Lynna Gene Cook
lgcook5@unlserve.unl.edu
or
402-436-1644

In case of inclement weather, listen to
KFOR or KLIN radio for information.

LINCOLN BOARD OF EDUCATION

P.O. Box 82889 • Lincoln, NE 68501



An Equal Opportunity/Affirmative Action Employer

25th
Annual

LINCOLN PUBLIC SCHOOLS

Oral Spelling Bee

sponsored in cooperation with
The Lincoln Journal Star

Saturday, February 11, 2012, 8:30 a.m.

(Doors will open at 7:45 a.m.)

Culler Middle School Auditorium
5201 Vine Street
Lincoln, Nebraska 68504

Eligibility of students

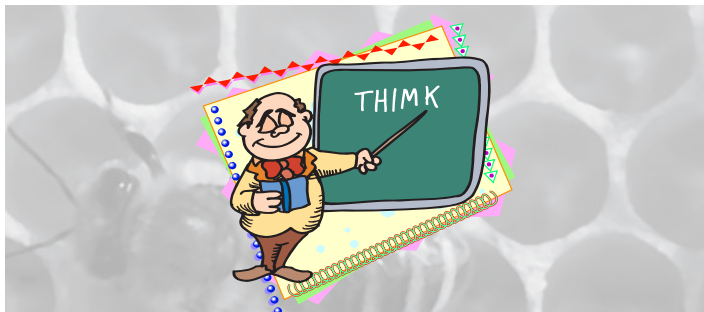
Any student of the Lincoln Public Schools in grades five through eight who will be under the age of 16 on or before the date of the national finals shall be eligible to participate.

The suggested Midwest Spelling Bee Rules will govern the Lincoln Public Schools Oral Spelling Bee.

Participating students must have the permission of a parent or guardian and submit a completed registration form to their elementary or middle school office or to the LPS English/Language Arts Office by January 27, 2012.

85th Annual Midwest Spelling Bee
Omaha, Nebraska—March 10, 2012

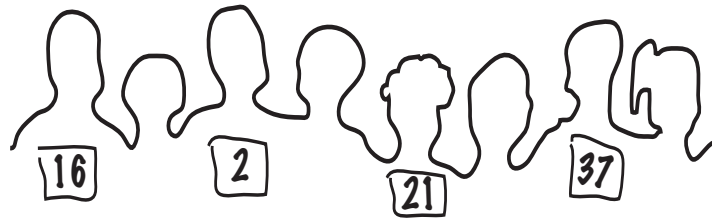
84th Annual Scripps
National Spelling Bee Week
Washington, D.C.—To Be Announced



Midwest Spelling Bee Rules

(Suggested for local spelling bees by the *Omaha World Herald*)

1. County and district champions of preliminary competitions competing in the Midwest Spelling Bee in Omaha, Neb. must qualify under two basic requirements: (a) they must not have passed beyond the eighth grade on or before Feb. 1, 2012; and (b) they must not have reached their 16th birthday on or before the date of the national finals.
2. Preliminary competition may be conducted either in writing or orally, or both. The Midwest Spelling Bee, however, reserves the right to conduct the Midwest finals in Omaha in both modes.
3. Word lists will not be supplied by the Midwest Spelling Bee for local bees. National Bee headquarters will be responsible for compiling the word list for the finals in Washington. Words used in the national finals shall be selected from the 2012 *Spell It!*, from the 2012 *Sponsor Bee Guide*, International Dictionary and its *Addenda Section*, copyright 2002 Merriam-Webster Inc.
4. Words shall be pronounced according to the diacritical markings in *Webster's Third New International Dictionary* and its *Addenda Section*, copyright 2002 Merriam-Webster, Inc., and the 2012 *Sponsor Bee Guide I*, from which the pronouncer shall select the definition or definitions that he/she gives. With the approval of the judges, he/she may give a fuller explanation of the meaning of the word to supplement the dictionary definition or definitions quoted.
5. In competition, after the pronouncer gives the contestant a word, the contestant will be encouraged to pronounce the word before spelling it and after spelling it. However, no contestant will be eliminated for failing to pronounce a word.
6. The contestant may request the pronouncer to pronounce the word again, define it, or use it in a sentence. The pronouncer shall grant the request until the officials agree that the word has been made reasonable clear to the contestant. Judges may disqualify any contestant who ignores a request to start spelling.



7. Having started to spell a word, a contestant may stop and start over, retracing the spelling from the beginning, but in retracing there can be no change of letters or their sequence from those first pronounced. If letters or their sequence are changed in the respelling, the speller will be eliminated.
8. If, inadvertently, no definition of a homonym is given, the correct spelling of either word shall be accepted as correct. When a speller is given the definition of a homonym, he/she must spell the word defined.
9. When a speller fails to spell a word correctly, he/she must drop out of the contest, and another word shall be given to the next contestant in line.
10. The elimination procedure changes when the contestants are reduced to two. At that point, as soon as one contestant misspells a word, the other contestant immediately shall be given an opportunity to spell the same word. If the second contestant spells the word correctly, plus the next word on the pronouncer's list, then he/she shall be declared the champion.
11. If one of the last two spellers misses and the other, after correcting the error, misspells the new word submitted to him, then the misspelled new word shall be referred to the first speller for correction. If the first speller then succeeds in correcting the error and correctly spells the next word on the pronouncer's list, then he/she shall be declared champion.
12. If both misspell the same word, both shall continue in the contest.
13. *Webster's New International Dictionary* and its *Addenda Section*, copyright 2002, Merriam-Webster, Inc., shall serve as the final authority for the spelling of words in the Midwest Spelling Bee. Such variations and reformed spellings as appear in small type at the bottom of the page in Webster's, keyed with a dagger or double dagger, will not be accepted as correct. Obsolete and archaic spellings will be regarded as errors.
14. Any question relating to the spelling of a word should be referred to the judges immediately before completion of the current round. No protest can be entertained after a round is completed.
15. The judges are in complete control of the bee. Their decision shall be final on all questions.
16. Any contestant having once won a National Spelling Bee championship is ineligible for future competition in the National Spelling Bee and the Midwest Spelling Bee.

Note: All decisions made by district spelling bee officials will be regarded as final by the World-Herald/Midwest Spelling Bee.

Detach here

Registration for Lincoln Public Schools 2012 Oral Spelling Bee

Parents and Guardians:

Please complete and return this form to your child's teacher or school office by Monday, January 27, 2012.

Student's Name _____

Teacher's Name _____

School _____

Birth Date _____

Grade _____

Address _____

(Street)

(City)

(State)

(Zip Code)

I approve of my child's participation in the 2012 LPS Oral Spelling Bee, conducted by the Lincoln Public Schools according to the 2012 Midwest Spelling Bee Contest Rules, reprinted in this brochure.

Parent/Guardian Signature _____

Telephone Number _____

Principals: Please return this registration form to the English Office, Box 24, TLC, by Monday, January 30, 2012. Late registrations are accepted the morning of the Spelling Bee.