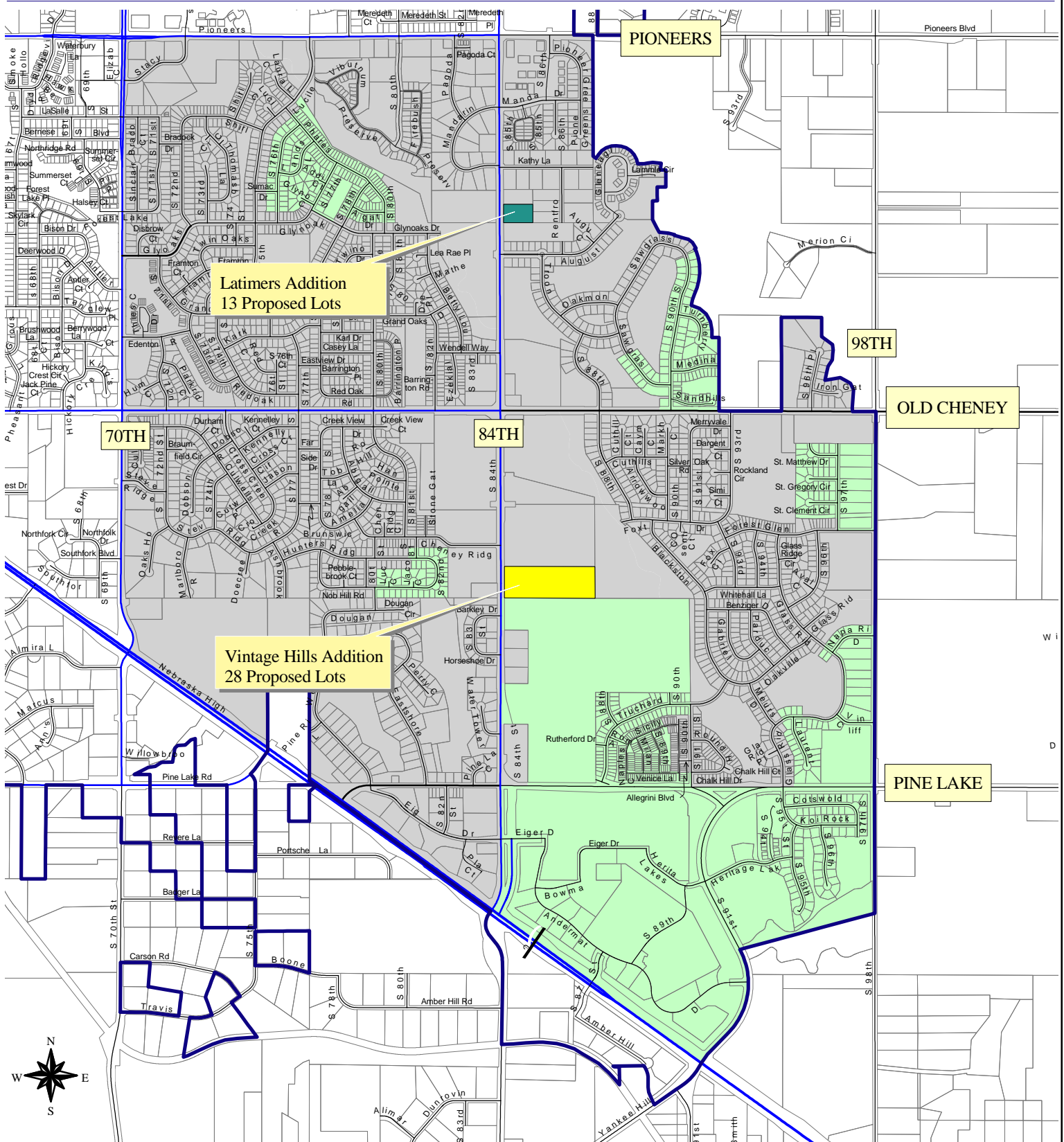


New Developments Moved to the Calvert, Pound, and Southeast Attendance Areas.



Latimers Addition
13 Proposed Lots

Vintage Hills Addition
28 Proposed Lots

PIONEERS

98TH

OLD CHENEY

70TH

84TH

PINE LAKE



March 7th, 2005

R:\Projects\City Development Maps\New Housing Developments\Vintage Hills.apr

Legend:

- LPS District Boundary
- Vintage Hills Addition
- Calvert, Pound & Southeast Maxey, Lux & East